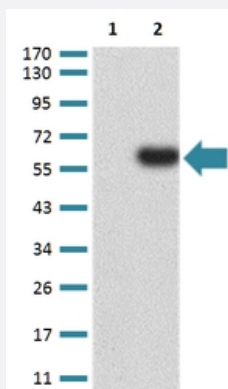


PTPN14 monoclonal antibody, clone 2B3H7

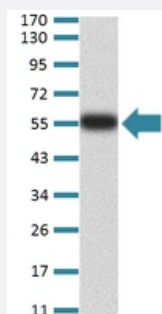
Catalog # MAB17310 Size 100 ug

Applications



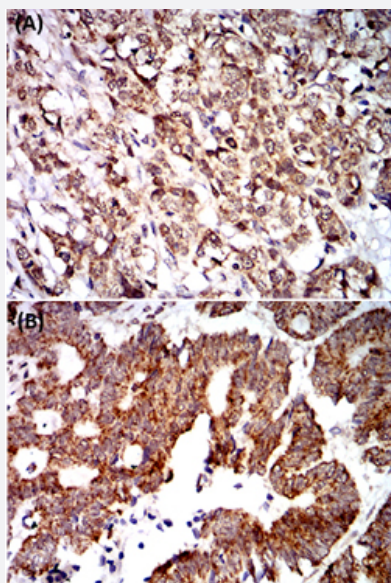
Western Blot

Western Blot analysis of (1) HEK293 cells, (2) PTPN14-hlgGfC transfected HEK293 cell lysate.



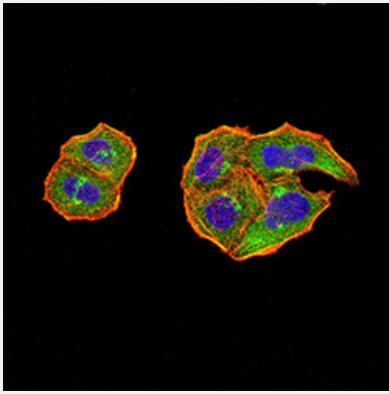
Western Blot

Western Blot analysis of human PTPN14 recombinant protein.



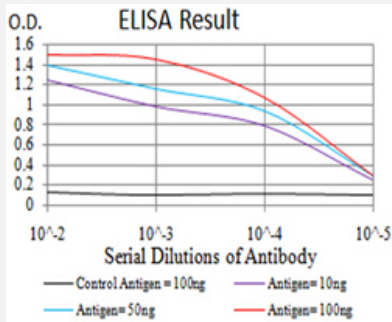
Immunohistochemistry (Formalin/PFA-fixed paraffin-embedded sections)

Immunohistochemical staining of (A) breast cancer tissues and (B) rectum cancer tissues with DAB staining.



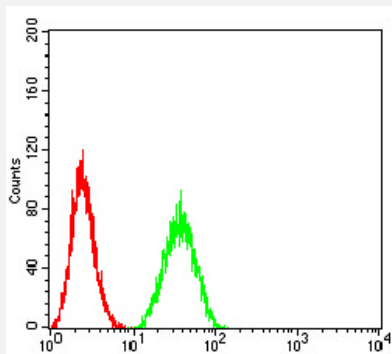
Immunofluorescence

Immunofluorescent staining of HeLa cell line with antibody (green). DRAQ5 fluorescent DNA dye. Red: Actin filaments have been labeled with Alexa Fluor-555 phalloidin.



Enzyme-linked Immunoabsorbent Assay

ELISA analysis of PTPN14 monoclonal antibody.



Flow Cytometry

Flow cytometric analysis of HeLa cells using PTPN14 mouse monoclonal antibody (green) and negative control (red).

Specification

Product Description	Mouse monoclonal antibody raised against recombinant human PTPN14.
Immunogen	Recombinant protein corresponding to amino acids 896-1169 of human PTPN14 from <i>E. coli</i> .
Host	Mouse
Theoretical MW (kDa)	135.3
Reactivity	Human
Form	Liquid
Isotype	IgG1

Recommend Usage	ELISA (1:10000) Flow Cytometry (1:200-400) Immunohistochemistry (Formalin/PFA-fixed paraffin-embedded sections) (1:200-1000) Immunofluorescence (1:200-1000) Western Blot (1:500-1:2000) The optimal working dilution should be determined by the end user.
Storage Buffer	In PBS (0.05% sodium azide).
Storage Instruction	Store at 4°C. For long term storage store at -20°C. Aliquot to avoid repeated freezing and thawing.
Note	This product contains sodium azide: a POISONOUS AND HAZARDOUS SUBSTANCE which should be handled by trained staff only.

Applications

- Western Blot

Western Blot analysis of (1) HEK293 cells, (2) PTPN14-hlgGfc transfected HEK293 cell lysate.

- Western Blot

Western Blot analysis of human PTPN14 recombinant protein.

- Immunohistochemistry (Formalin/PFA-fixed paraffin-embedded sections)

Immunohistochemical staining of (A) breast cancer tissues and (B) rectum cancer tissues with DAB staining.

- Immunofluorescence

Immunofluorescent staining of HeLa cell line with antibody (green). DRAQ5 fluorescent DNA dye. Red: Actin filaments have been labeled with Alexa Fluor-555 phalloidin.

- Enzyme-linked Immunoabsorbent Assay

ELISA analysis of PTPN14 monoclonal antibody.

- Flow Cytometry

Flow cytometric analysis of HeLa cells using PTPN14 mouse monoclonal antibody (green) and negative control (red).

Gene Info — PTPN14

Entrez GeneID

[5784](#)

Gene Name

PTPN14

Gene Alias	MGC126803, PEZ, PTP36
Gene Description	protein tyrosine phosphatase, non-receptor type 14
Omim ID	603155
Gene Ontology	Hyperlink
Gene Summary	<p>The protein encoded by this gene is a member of the protein tyrosine phosphatase (PTP) family. PTPs are known to be signaling molecules that regulate a variety of cellular processes including cell growth, differentiation, mitotic cycle, and oncogenic transformation. This PTP contains an N-terminal noncatalytic domain similar to that of band 4.1 superfamily cytoskeleton-associated proteins, which suggested the membrane or cytoskeleton localization of this protein. The specific function of this PTP has not yet been determined. [provided by RefSeq]</p>
Other Designations	OTTHUMP00000035094 cytoskeletal-associated protein tyrosine phosphatase

Disease

- [Tobacco Use Disorder](#)