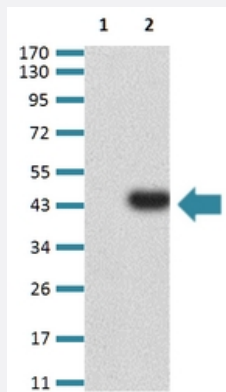


SUZ12 monoclonal antibody, clone 6C11E7

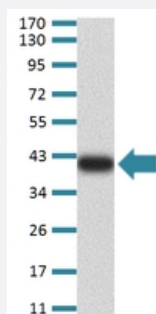
Catalog # MAB17309 Size 100 ug

Applications



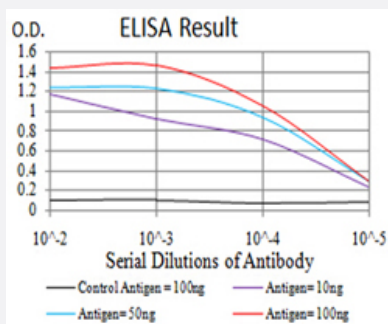
Western Blot

Western Blot analysis of (1) HEK293 cells, (2) SUZ12-hlgGfc transfected HEK293 cell lysate.



Western Blot

Western Blot analysis of human SUZ12 recombinant protein.



Enzyme-linked Immunoabsorbent Assay

ELISA analysis of SUZ12 monoclonal antibody.

Specification

Product Description

Mouse monoclonal antibody raised against recombinant human SUZ12.

Immunogen	Recombinant protein corresponding to amino acids 1-139 of human SUZ12 from <i>E. coli</i> .
Host	Mouse
Theoretical MW (kDa)	83
Reactivity	Human
Form	Liquid
Isotype	IgG1
Recommend Usage	ELISA (1:10000) Western Blot (1:500-1:2000) The optimal working dilution should be determined by the end user.
Storage Buffer	In PBS (0.05% sodium azide).
Storage Instruction	Store at 4°C. For long term storage store at -20°C. Aliquot to avoid repeated freezing and thawing.
Note	This product contains sodium azide: a POISONOUS AND HAZARDOUS SUBSTANCE which should be handled by trained staff only.

Applications

- Western Blot

Western Blot analysis of (1) HEK293 cells, (2) SUZ12-hlgGfC transfected HEK293 cell lysate.

- Western Blot

Western Blot analysis of human SUZ12 recombinant protein.

- Enzyme-linked Immunoabsorbent Assay

ELISA analysis of SUZ12 monoclonal antibody.

Gene Info — SUZ12

Entrez GeneID	23512
Gene Name	SUZ12
Gene Alias	CHET9, JJAZ1, KIAA0160
Gene Description	suppressor of zeste 12 homolog (Drosophila)

Omim ID	606245
----------------	------------------------

Gene Ontology	Hyperlink
----------------------	---------------------------

Gene Summary	This zinc finger gene has been identified at the breakpoints of a recurrent chromosomal translocation reported in endometrial stromal sarcoma. Recombination of these breakpoints results in the fusion of this gene and JAZF1. The protein encoded by this gene contains a zinc finger domain in the C terminus of the coding region. [provided by RefSeq]
---------------------	---

Other Designations	joined to JAZF1
---------------------------	-----------------