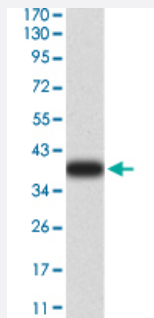


ARF1 monoclonal antibody, clone 6A10A5

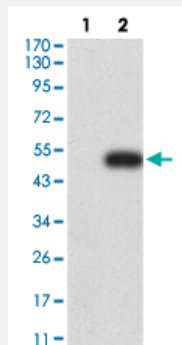
Catalog # MAB17306 Size 100 ug

Applications



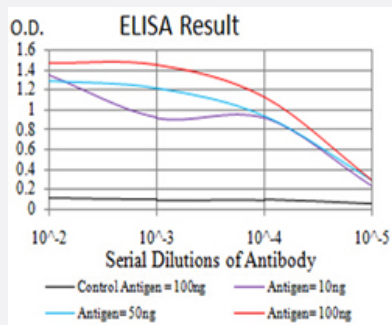
Western Blot

Western Blot analysis of human ARF1 recombinant protein.



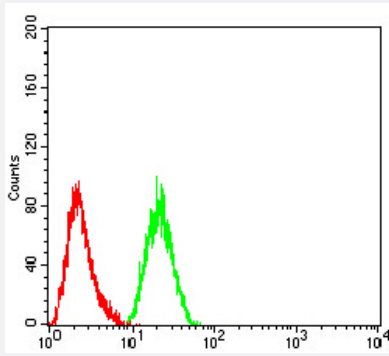
Western Blot

Western Blot analysis of (1) HEK293 cells, (2) ARF1-hlgGfc transfected HEK293 cell lysate.



Enzyme-linked Immunoabsorbent Assay

ELISA analysis of ARF1 monoclonal antibody.



Flow Cytometry

Flow cytometric analysis of HeLa cells using ARF1 mouse monoclonal antibody (green) and negative control (red).

Specification

Product Description	Mouse monoclonal antibody raised against recombinant human ARF1.
Immunogen	Recombinant protein corresponding to amino acids 76-182 of human ARF1 from <i>E. coli</i> .
Host	Mouse
Theoretical MW (kDa)	20.7
Reactivity	Human
Form	Liquid
Isotype	IgG1
Recommend Usage	ELISA (1:10000) Flow Cytometry (1:200-400) Western Blot (1:500-1:2000) The optimal working dilution should be determined by the end user.
Storage Buffer	In PBS (0.05% sodium azide).
Storage Instruction	Store at 4°C. For long term storage store at -20°C. Aliquot to avoid repeated freezing and thawing.
Note	This product contains sodium azide: a POISONOUS AND HAZARDOUS SUBSTANCE which should be handled by trained staff only.

Applications

• Western Blot

Western Blot analysis of human ARF1 recombinant protein.

- Western Blot

Western Blot analysis of (1) HEK293 cells, (2) ARF1-hlgGfc transfected HEK293 cell lysate.

- Enzyme-linked Immunoabsorbent Assay

ELISA analysis of ARF1 monoclonal antibody.

- Flow Cytometry

Flow cytometric analysis of HeLa cells using ARF1 mouse monoclonal antibody (green) and negative control (red).

Gene Info — ARF1

Entrez GeneID [375](#)

Gene Name ARF1

Gene Alias -

Gene Description ADP-ribosylation factor 1

Omim ID [103180](#)

Gene Ontology [Hyperlink](#)

Gene Summary

ADP-ribosylation factor 1 (ARF1) is a member of the human ARF gene family. The family members encode small guanine nucleotide-binding proteins that stimulate the ADP-ribosyltransferase activity of cholera toxin and play a role in vesicular trafficking as activators of phospholipase D. The gene products, including 6 ARF proteins and 11 ARF-like proteins, constitute a family of the RAS superfamily. The ARF proteins are categorized as class I (ARF1, ARF2 and ARF3), class II (ARF4 and ARF5) and class III (ARF6), and members of each class share a common gene organization. The ARF1 protein is localized to the Golgi apparatus and has a central role in intra-Golgi transport. Multiple alternatively spliced transcript variants encoding the same protein have been found for this gene. [provided by RefSeq]

Other Designations OTTHUMP00000035715

Pathway

- [Vibrio cholerae infection](#)

Disease

- [Alzheimer disease](#)

- [Cardiovascular Diseases](#)
- [Chronic Disease](#)
- [Diabetes Complications](#)
- [Disease Progression](#)
- [Disease Susceptibility](#)
- [Genetic Predisposition to Disease](#)
- [HIV Infections](#)
- [Metabolic Syndrome X](#)
- [Neoplasms](#)
- [Occupational Diseases](#)
- [Osteoporosis](#)