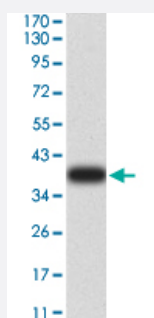


# ARF1 monoclonal antibody, clone 8D8E9

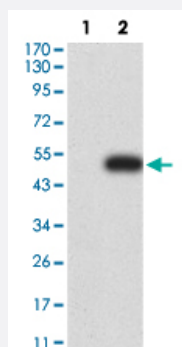
Catalog # MAB17305      Size 100 ug

## Applications



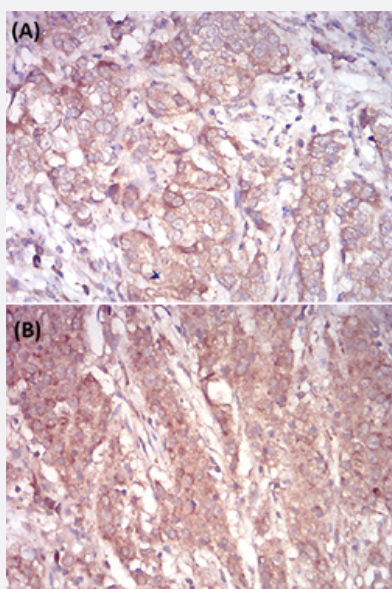
### Western Blot

Western Blot analysis of human ARF1 recombinant protein.



### Western Blot

Western Blot analysis of (1) HEK293 cells, (2) ARF1-hlgGfc transfected HEK293 cell lysate.

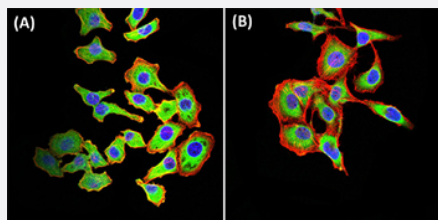


### Immunohistochemistry (Formalin/PFA-fixed paraffin-embedded sections)

Immunohistochemical staining of (A) bladder cancer tissues and (B) stomach cancer tissues with DAB staining.

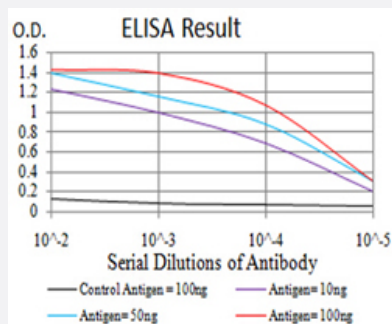
## Immunofluorescence

Immunofluorescent staining of (A) HL-7702 and (B) SK-OV-3 cell line with antibody (green). DRAQ5 fluorescent DNA dye. Red: Actin filaments have been labeled with Alexa Fluor-555 phalloidin.



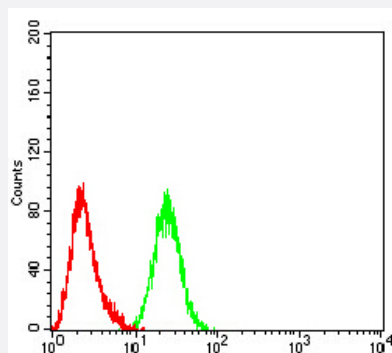
## Enzyme-linked Immunoabsorbent Assay

ELISA analysis of ARF1 monoclonal antibody.



## Flow Cytometry

Flow cytometric analysis of HeLa cells using ARF1 mouse monoclonal antibody (green) and negative control (red).



## Specification

Product Description	Mouse monoclonal antibody raised against recombinant human ARF1.
Immunogen	Recombinant protein corresponding to amino acids 76-182 of human ARF1 from <i>E. coli</i> .
Host	Mouse
Theoretical MW (kDa)	20.7
Reactivity	Human
Form	Liquid
Isotype	IgG2a

<b>Recommend Usage</b>	ELISA (1:10000) Flow Cytometry (1:200-400) Immunohistochemistry (Formalin/PFA-fixed paraffin-embedded sections) (1:200-1000) Immunofluorescence (1:200-1000) Western Blot (1:500-1:2000) The optimal working dilution should be determined by the end user.
<b>Storage Buffer</b>	In PBS (0.05% sodium azide).
<b>Storage Instruction</b>	Store at 4°C. For long term storage store at -20°C. Aliquot to avoid repeated freezing and thawing.
<b>Note</b>	This product contains sodium azide: a POISONOUS AND HAZARDOUS SUBSTANCE which should be handled by trained staff only.

## Applications

- Western Blot

Western Blot analysis of human ARF1 recombinant protein.

- Western Blot

Western Blot analysis of (1) HEK293 cells, (2) ARF1-hlgGfc transfected HEK293 cell lysate.

- Immunohistochemistry (Formalin/PFA-fixed paraffin-embedded sections)

Immunohistochemical staining of (A) bladder cancer tissues and (B) stomach cancer tissues with DAB staining.

- Immunofluorescence

Immunofluorescent staining of (A) HL-7702 and (B) SK-OV-3 cell line with antibody (green). DRAQ5 fluorescent DNA dye. Red: Actin filaments have been labeled with Alexa Fluor-555 phalloidin.

- Enzyme-linked Immunoabsorbent Assay

ELISA analysis of ARF1 monoclonal antibody.

- Flow Cytometry

Flow cytometric analysis of HeLa cells using ARF1 mouse monoclonal antibody (green) and negative control (red).

## Gene Info — ARF1

<b>Entrez GeneID</b>	<a href="#">375</a>
<b>Gene Name</b>	ARF1

Gene Alias	-
Gene Description	ADP-ribosylation factor 1
Omim ID	<a href="#">103180</a>
Gene Ontology	<a href="#">Hyperlink</a>
Gene Summary	ADP-ribosylation factor 1 (ARF1) is a member of the human ARF gene family. The family members encode small guanine nucleotide-binding proteins that stimulate the ADP-ribosyltransferase activity of cholera toxin and play a role in vesicular trafficking as activators of phospholipase D. The gene products, including 6 ARF proteins and 11 ARF-like proteins, constitute a family of the RAS superfamily. The ARF proteins are categorized as class I (ARF1, ARF2 and ARF3), class II (ARF4 and ARF5) and class III (ARF6), and members of each class share a common gene organization. The ARF1 protein is localized to the Golgi apparatus and has a central role in intra-Golgi transport. Multiple alternatively spliced transcript variants encoding the same protein have been found for this gene. [provided by RefSeq]
Other Designations	OTTHUMP00000035715

## Pathway

- [Vibrio cholerae infection](#)

## Disease

- [Alzheimer disease](#)
- [Cardiovascular Diseases](#)
- [Chronic Disease](#)
- [Diabetes Complications](#)
- [Disease Progression](#)
- [Disease Susceptibility](#)
- [Genetic Predisposition to Disease](#)
- [HIV Infections](#)
- [Metabolic Syndrome X](#)
- [Neoplasms](#)
- [Occupational Diseases](#)

- [Osteoporosis](#)