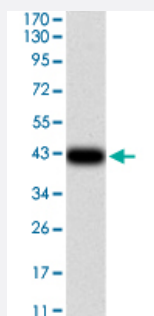


MAP2K3 monoclonal antibody, clone 2E12D11

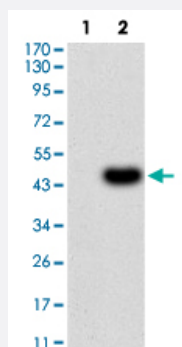
Catalog # MAB17303 Size 100 ug

Applications



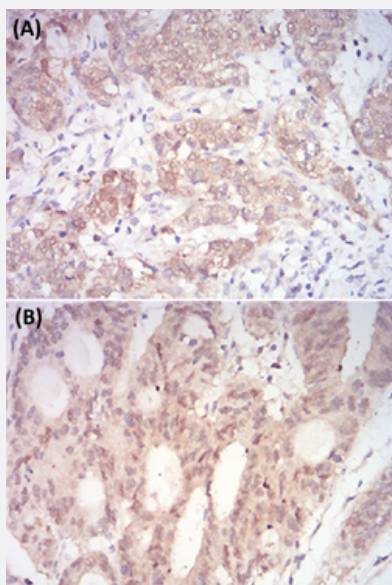
Western Blot

Western Blot analysis of human MAP2K3 recombinant protein.



Western Blot

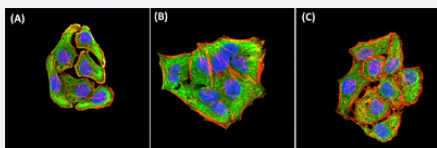
Western Blot analysis of (1) HEK293 cells, (2) MAP2K3-hlgGfC transfected HEK293 cell lysate.



Immunohistochemistry (Formalin/PFA-fixed paraffin-embedded sections)

Immunohistochemical staining of (A) bladder cancer tissues and (B) rectum cancer tissues with DAB staining.

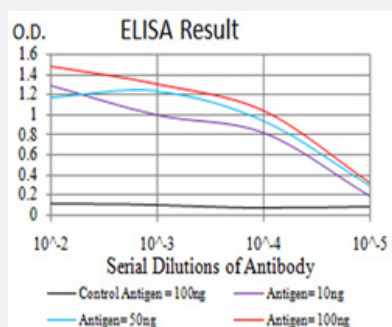
Immunofluorescence



Immunofluorescent staining of (A) GC-7901 (B) HeLa and (C) HepG2 cell line with antibody (green). DAPI fluorescent DNA dye. Red: Actin filaments have been labeled with Alexa Fluor-555 phalloidin.

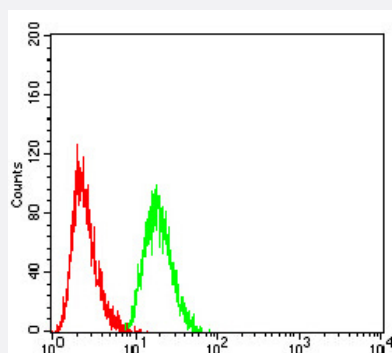
Enzyme-linked Immunoabsorbent Assay

ELISA analysis of MAP2K3 monoclonal antibody.



Flow Cytometry

Flow cytometric analysis of HeLa cells using MAP2K3 mouse monoclonal antibody (green) and negative control (red).



Specification

Product Description	Mouse monoclonal antibody raised against recombinant human MAP2K3.
Immunogen	Recombinant protein corresponding to amino acids 1-138 of human MAP2K3 from <i>E. coli</i> .
Host	Mouse
Theoretical MW (kDa)	39.3
Reactivity	Human
Form	Liquid
Isotype	IgG1

Recommend Usage	ELISA (1:10000) Flow Cytometry (1:200-400) Immunohistochemistry (Formalin/PFA-fixed paraffin-embedded sections) (1:200-1000) Immunofluorescence (1:200-1000) Western Blot (1:500-1:2000) The optimal working dilution should be determined by the end user.
Storage Buffer	In PBS (0.05% sodium azide).
Storage Instruction	Store at 4°C. For long term storage store at -20°C. Aliquot to avoid repeated freezing and thawing.
Note	This product contains sodium azide: a POISONOUS AND HAZARDOUS SUBSTANCE which should be handled by trained staff only.

Applications

- Western Blot
Western Blot analysis of human MAP2K3 recombinant protein.
- Western Blot
Western Blot analysis of (1) HEK293 cells, (2) MAP2K3-hlgGfC transfected HEK293 cell lysate.
- Immunohistochemistry (Formalin/PFA-fixed paraffin-embedded sections)
Immunohistochemical staining of (A) bladder cancer tissues and (B) rectum cancer tissues with DAB staining.
- Immunofluorescence
Immunofluorescent staining of (A) GC-7901 (B) HeLa and (C) HepG2 cell line with antibody (green). DRAQ5 fluorescent DNA dye. Red: Actin filaments have been labeled with Alexa Fluor-555 phalloidin.
- Enzyme-linked Immunoabsorbent Assay
ELISA analysis of MAP2K3 monoclonal antibody.
- Flow Cytometry
Flow cytometric analysis of HeLa cells using MAP2K3 mouse monoclonal antibody (green) and negative control (red).

Gene Info — MAP2K3

Entrez GeneID [5606](#)

Gene Name MAP2K3

Gene Alias	MAPKK3, MEK3, MKK3, PRKMK3
Gene Description	mitogen-activated protein kinase kinase 3
Omim ID	602315
Gene Ontology	Hyperlink
Gene Summary	<p>The protein encoded by this gene is a dual specificity protein kinase that belongs to the MAP kinase family. This kinase is activated by mitogenic and environmental stress, and participates in the MAP kinase-mediated signaling cascade. It phosphorylates and thus activates MAPK14/p38-MAPK. This kinase can be activated by insulin, and is necessary for the expression of glucose transporter. Expression of RAS oncogene is found to result in the accumulation of the active form of this kinase, which thus leads to the constitutive activation of MAPK14, and confers oncogenic transformation of primary cells. The inhibition of this kinase is involved in the pathogenesis of Yersinia pseudotuberculosis. Multiple alternatively spliced transcript variants that encode distinct isoforms have been reported for this gene. [provided by RefSeq]</p>
Other Designations	MAP kinase kinase 3 MAPK/ERK kinase 3 OTTHUMP00000166044 dual specificity mitogen activated protein kinase kinase 3

Pathway

- [Amyotrophic lateral sclerosis \(ALS\)](#)
- [Fc epsilon RI signaling pathway](#)
- [GnRH signaling pathway](#)
- [MAPK signaling pathway](#)
- [Toll-like receptor signaling pathway](#)