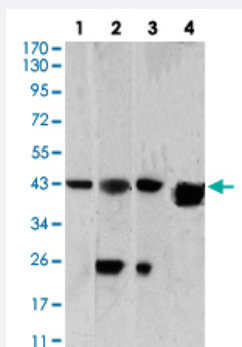


SH3GL1 monoclonal antibody, clone 4B4C2

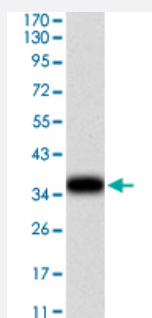
Catalog # MAB17301 Size 100 ug

Applications



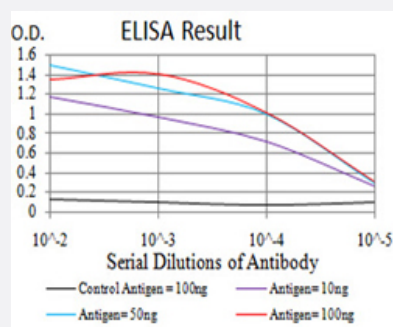
Western Blot

Western Blot analysis of (1) HepG2, (2) A549, (3) HT-29, and (4) PC-12 cell lysate.



Western Blot

Western Blot analysis of human TH recombinant protein.



Enzyme-linked Immunoabsorbent Assay

ELISA analysis of SH3GL1 monoclonal antibody.

Specification

Product Description

Mouse monoclonal antibody raised against recombinant human SH3GL1.

Immunogen

Recombinant protein corresponding to amino acids 12-119 of human SH3GL1 from *E. coli*.

Host	Mouse
Theoretical MW (kDa)	41.5
Reactivity	Human, Rat
Form	Liquid
Isotype	IgG1
Recommend Usage	ELISA (1:10000) Western Blot (1:500-1:2000) The optimal working dilution should be determined by the end user.
Storage Buffer	In PBS (0.05% sodium azide).
Storage Instruction	Store at 4°C. For long term storage store at -20°C. Aliquot to avoid repeated freezing and thawing.
Note	This product contains sodium azide: a POISONOUS AND HAZARDOUS SUBSTANCE which should be handled by trained staff only.

Applications

- Western Blot

Western Blot analysis of (1) HepG2, (2) A549, (3) HT-29, and (4) PC-12 cell lysate.

- Western Blot

Western Blot analysis of human TH recombinant protein.

- Enzyme-linked Immunoabsorbent Assay

ELISA analysis of SH3GL1 monoclonal antibody.

Gene Info — SH3GL1

Entrez GeneID	6455
Gene Name	SH3GL1
Gene Alias	CNSA1, EEN, MGC111371, SH3D2B, SH3P8
Gene Description	SH3-domain GRB2-like 1
Omim ID	601626 601768

Gene Ontology

[Hyperlink](#)

Other Designations

SH3 domain GRB2-like 1|SH3-containing Grb-2-like 1 protein|SH3-containing protein EEN|extra
11-19 leukemia fusion|fusion partner of MLL

Pathway

- [Endocytosis](#)