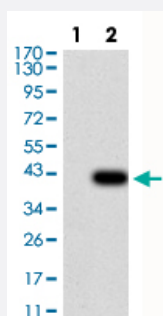


SH3GL1 monoclonal antibody, clone 2A9H4

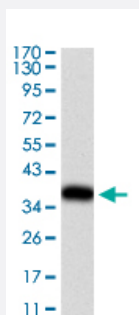
Catalog # MAB17299 Size 100 ug

Applications



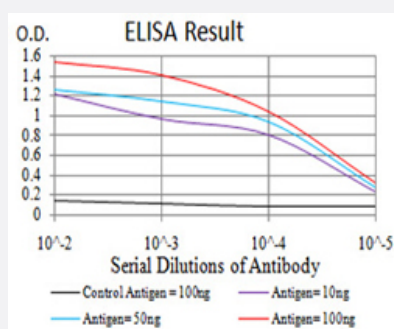
Western Blot

Western Blot analysis of (1) HEK293 cells, (2) SH3GL1-hlgGfc transfected HEK293 cell lysate.



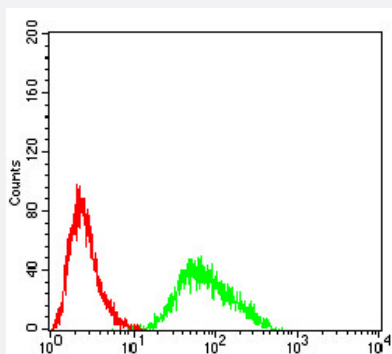
Western Blot

Western Blot analysis of human TH recombinant protein.



Enzyme-linked Immunoabsorbent Assay

ELISA analysis of SH3GL1 monoclonal antibody.



Flow Cytometry

Flow cytometric analysis of HeLa cells using SH3GL1 mouse monoclonal antibody (green) and negative control (red).

Specification

Product Description	Mouse monoclonal antibody raised against recombinant human SH3GL1.
Immunogen	Recombinant protein corresponding to amino acids 12-119 of human SH3GL1 from <i>E. coli</i> .
Host	Mouse
Theoretical MW (kDa)	41.5
Reactivity	Human
Form	Liquid
Isotype	IgG1
Recommend Usage	ELISA (1:10000) Flow Cytometry (1:200-400) Western Blot (1:500-1:2000) The optimal working dilution should be determined by the end user.
Storage Buffer	In PBS (0.05% sodium azide).
Storage Instruction	Store at 4°C. For long term storage store at -20°C. Aliquot to avoid repeated freezing and thawing.
Note	This product contains sodium azide: a POISONOUS AND HAZARDOUS SUBSTANCE which should be handled by trained staff only.

Applications

● Western Blot

Western Blot analysis of (1) HEK293 cells, (2) SH3GL1-hlgGfc transfected HEK293 cell lysate.

- Western Blot

Western Blot analysis of human TH recombinant protein.

- Enzyme-linked Immunoabsorbent Assay

ELISA analysis of SH3GL1 monoclonal antibody.

- Flow Cytometry

Flow cytometric analysis of HeLa cells using SH3GL1 mouse monoclonal antibody (green) and negative control (red).

Gene Info — SH3GL1

Entrez GeneID	6455
Gene Name	SH3GL1
Gene Alias	CNSA1, EEN, MGC111371, SH3D2B, SH3P8
Gene Description	SH3-domain GRB2-like 1
Omim ID	601626 601768
Gene Ontology	Hyperlink
Other Designations	SH3 domain GRB2-like 1 SH3-containing Grb-2-like 1 protein SH3-containing protein EEN extra 11-19 leukemia fusion fusion partner of MLL

Pathway

- [Endocytosis](#)