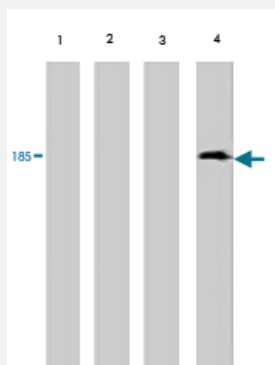


VTG monoclonal antibody, clone 3C1

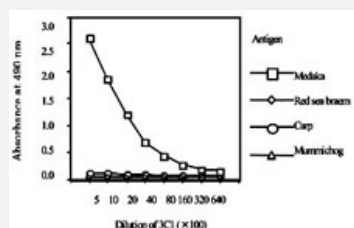
Catalog # MAB1729 Size 100 ug

Applications



Western Blot

Western blot analysis of extract from red sea bream (lane 1) , carp (lane 2) , mummichog (lane 3) and medaka (lane 4) , using Vitellogenin monoclonal antibody, clone 3C1 (Cat # MAB1729) .



Enzyme-linked Immunoabsorbent Assay

Standard curve for red sea bream, carp, mummichog and medaka ELISA, using Vitellogenin monoclonal antibody, clone 3C1 (Cat # MAB1729) .

Specification

Product Description	Mouse monoclonal antibody raised against native Vitellogenin (VTG).
Immunogen	Native purified VTG from Medaka.
Host	Mouse
Reactivity	Medaka
Form	Liquid
Isotype	IgG1

Quality Control Testing	Antibody Reactive Against Native Purified Protein.
Recommend Usage	Western Blot (0.01-0.1 ug/mL) ELISA (0.1-0.5 ug/mL) The optimal working dilution should be determined by the end user.
Storage Buffer	In PBS (0.1% BSA, 0.1% proclin)
Storage Instruction	Store at -20°C. Aliquot to avoid repeated freezing and thawing.

Applications

- Western Blot

Western blot analysis of extract from red sea bream (lane 1) , carp (lane 2) , mummichog (lane 3) and medaka (lane 4) , using Vitellogenin monoclonal antibody, clone 3C1 (Cat # MAB1729) .

- Enzyme-linked Immunoabsorbent Assay

Standard curve for red sea bream, carp, mummichog and medaka ELISA, using Vitellogenin monoclonal antibody, clone 3C1 (Cat # MAB1729) .

Publication Reference

- [Transition of serum vitellogenin cycle in Sakhalin taimen \(Hucho perryi\).](#)

Hiramatsu N, Shimizu M, Fukada H, Kitamura M, Ura K, Fuda H, Hara A.

Comparative Biochemistry and Physiology. Part C, Pharmacology, Toxicology & Endocrinology 1997 OCT; 118(2):149.

- [Relationship between vitellogenin and its related egg yolk proteins in Sakhalin taimen \(Hucho perryi\).](#)

Hiramatsu N, Hara A.

Comparative Biochemistry and Physiology. Part A, Physiology 1996 Nov; 115(3):243.

Application: WB-Re, Recombinant protein