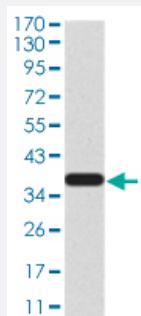


CBX2 monoclonal antibody, clone 4D10B2

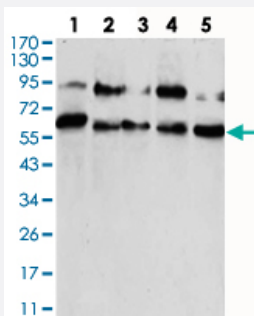
Catalog # MAB17286 Size 100 ug

Applications



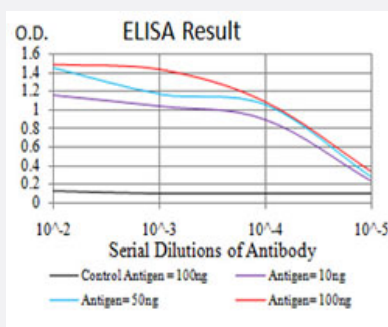
Western Blot

Western Blot analysis of human CBX2 recombinant protein.



Western Blot

Western Blot analysis of (1) HUVEC, (2) HEK293, (3) Hela, (4) NIH/3T3, and (5) A431 cell lysate.



Enzyme-linked Immunoabsorbent Assay

ELISA analysis of CBX2 monoclonal antibody.

Specification

Product Description

Mouse monoclonal antibody raised against recombinant human CBX2.

Immunogen

Recombinant protein corresponding to amino acids 402-525 of human CBX2 from *E. coli*.

Host	Mouse
Theoretical MW (kDa)	56
Reactivity	Human, Mouse
Form	Liquid
Isotype	IgG1
Recommend Usage	ELISA (1:10000) Western Blot (1:500-1:2000) The optimal working dilution should be determined by the end user.
Storage Buffer	In PBS (0.05% sodium azide).
Storage Instruction	Store at 4°C. For long term storage store at -20°C. Aliquot to avoid repeated freezing and thawing.
Note	This product contains sodium azide: a POISONOUS AND HAZARDOUS SUBSTANCE which should be handled by trained staff only.

Applications

- Western Blot

Western Blot analysis of human CBX2 recombinant protein.

- Western Blot

Western Blot analysis of (1) HUVEC, (2) HEK293, (3) Hela, (4) NIH/3T3, and (5) A431 cell lysate.

- Enzyme-linked Immunoabsorbent Assay

ELISA analysis of CBX2 monoclonal antibody.

Gene Info — CBX2

Entrez GeneID	84733
Gene Name	CBX2
Gene Alias	CDCA6, M33, MGC10561
Gene Description	chromobox homolog 2 (Pc class homolog, Drosophila)
Omim ID	602770

Gene Ontology[Hyperlink](#)**Gene Summary**

O

Other Designations

M33 polycomb-like|cell division cycle associated 6|chromobox homolog 2|modifier 3