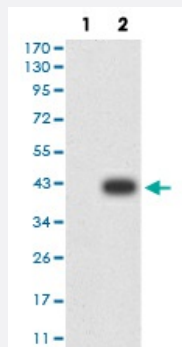


ATG2A monoclonal antibody, clone 4H8G3

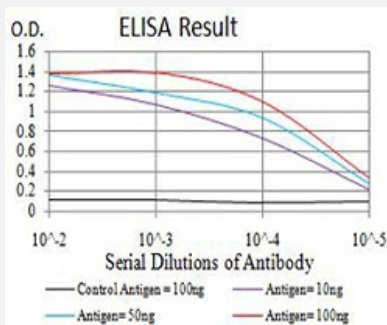
Catalog # MAB17283 Size 100 ug

Applications



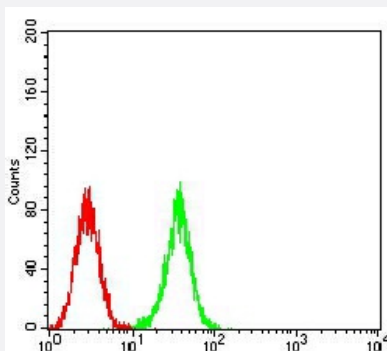
Western Blot (Transfected lysate)

Western Blot analysis of (1) HEK293 cells, (2) ATG2A-hlgGfC transfected HEK293 cell lysate.



Enzyme-linked Immunoabsorbent Assay

ELISA analysis of ATG2A monoclonal antibody, clone 4H8G3.



Flow Cytometry

Flow cytometric analysis of K562 cells using ATG2A monoclonal antibody (green) and negative control (red).

Specification

Product Description

Mouse monoclonal antibody raised against recombinant human ATG2A.

Immunogen	Recombinant protein corresponding to amino acid 325-429 of human ATG2A from <i>E. coli</i> .
Host	Mouse
Theoretical MW (kDa)	212.8kDa
Reactivity	Human
Form	Liquid
Isotype	IgG1
Recommend Usage	ELISA (1:10000) Western Blot (1:500-1:2000) Immunohistochemistry Immunocytochemistry (1:200-1:1000) Flow Cytometry The optimal working dilution should be determined by the end user.
Storage Buffer	In PBS (0.05% sodium azide).
Storage Instruction	Store at 4°C. For long term storage store at -20°C. Aliquot to avoid repeated freezing and thawing.
Note	This product contains sodium azide: a POISONOUS AND HAZARDOUS SUBSTANCE which should be handled by trained staff only.

Applications

- Western Blot (Transfected lysate)

Western Blot analysis of (1) HEK293 cells, (2) ATG2A-hlgFc transfected HEK293 cell lysate.

- Enzyme-linked Immunoabsorbent Assay

ELISA analysis of ATG2A monoclonal antibody, clone 4H8G3.

- Flow Cytometry

Flow cytometric analysis of K562 cells using ATG2A monoclonal antibody (green) and negative control (red).

Gene Info — ATG2A

Entrez GeneID	23130
Gene Name	ATG2A
Gene Alias	KIAA0404, MGC117153

Gene Description	ATG2 autophagy related 2 homolog A (S. cerevisiae)
Gene Ontology	Hyperlink
Other Designations	ATG2 autophagy related 2 homolog A OTTHUMP00000069743

Disease

- [Tobacco Use Disorder](#)