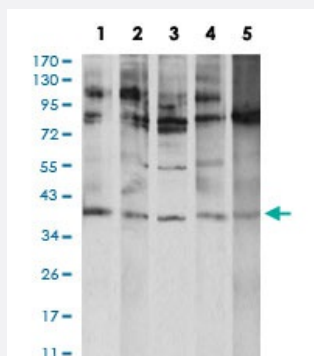


ATF4 monoclonal antibody, clone 2A6F12

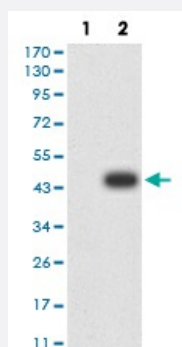
Catalog # MAB17282 Size 100 ug

Applications



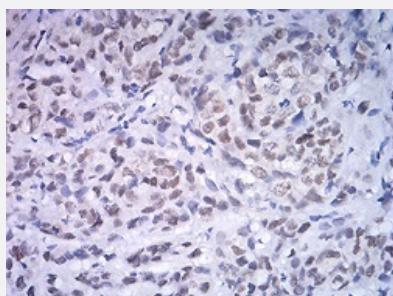
Western Blot (Cell lysate)

Western blot analysis of Lane 1: K562 cell; Lane 2: A431 cell; Lane 3: HeLa cell; Lane 4: HEK293 cell; Lane 5: Ramos cell with ATF4 monoclonal antibody.



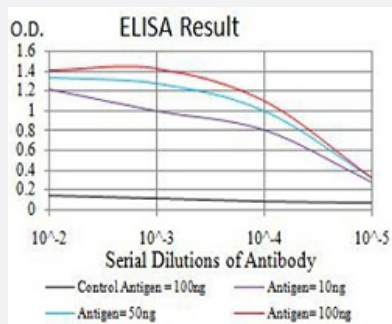
Western Blot (Transfected lysate)

Western Blot analysis of (1) HEK293 cells, (2) ATF4-hlgGfc transfected HEK293 cell lysate.



Immunohistochemistry (Formalin/PFA-fixed paraffin-embedded sections)

Immunohistochemical staining of paraffin-embedded breast cancer tissues with ATF4 monoclonal antibody.



Enzyme-linked Immunoabsorbent Assay

ELISA analysis of ATF4 monoclonal antibody, clone 2A6F12.

Specification

Product Description	Mouse monoclonal antibody raised against recombinant human ATF4.
Immunogen	Recombinant protein corresponding to amino acid 212-351 of human ATF4 from <i>E. coli</i> .
Host	Mouse
Theoretical MW (kDa)	38.6kDa
Reactivity	Human
Form	Liquid
Isotype	IgG1
Recommend Usage	ELISA (1:10000) Western Blot (1:500-1:2000) Immunohistochemistry (1:200-1:1000) Immunocytochemistry Flow Cytometry The optimal working dilution should be determined by the end user.
Storage Buffer	In PBS (0.05% sodium azide).
Storage Instruction	Store at 4°C. For long term storage store at -20°C. Aliquot to avoid repeated freezing and thawing.
Note	This product contains sodium azide: a POISONOUS AND HAZARDOUS SUBSTANCE which should be handled by trained staff only.

Applications

- Western Blot (Cell lysate)

Western blot analysis of Lane 1: K562 cell; Lane 2: A431 cell; Lane 3: HeLa cell; Lane 4: HEK293 cell; Lane 5: Ramos cell with ATF4 monoclonal antibody.

- Western Blot (Transfected lysate)

Western Blot analysis of (1) HEK293 cells, (2) ATF4-hlgGfc transfected HEK293 cell lysate.

- Immunohistochemistry (Formalin/PFA-fixed paraffin-embedded sections)

Immunohistochemical staining of paraffin-embedded breast cancer tissues with ATF4 monoclonal antibody.

- Enzyme-linked Immunoabsorbent Assay

ELISA analysis of ATF4 monoclonal antibody, clone 2A6F12.

Gene Info — ATF4

Entrez GeneID [468](#)

Gene Name ATF4

Gene Alias CREB-2, CREB2, TAXREB67, TXREB

Gene Description activating transcription factor 4 (tax-responsive enhancer element B67)

Omim ID [604064](#)

Gene Ontology [Hyperlink](#)

Gene Summary This gene encodes a transcription factor that was originally identified as a widely expressed mammalian DNA binding protein that could bind a tax-responsive enhancer element in the LTR of HTLV-1. The encoded protein was also isolated and characterized as the cAMP-response element binding protein 2 (CREB-2). The protein encoded by this gene belongs to a family of DNA-binding proteins that includes the AP-1 family of transcription factors, cAMP-response element binding proteins (CREBs) and CREB-like proteins. These transcription factors share a leucine zipper region that is involved in protein-protein interactions, located C-terminal to a stretch of basic amino acids that functions as a DNA binding domain. Two alternative transcripts encoding the same protein have been described. Two pseudogenes are located on the X chromosome at q28 in a region containing a large inverted duplication. [provided by RefSeq]

Other Designations activating transcription factor 4|cAMP response element-binding protein 2

Pathway

- [GnRH signaling pathway](#)

- [Long-term potentiation](#)
- [MAPK signaling pathway](#)
- [Neurotrophin signaling pathway](#)
- [Prostate cancer](#)

Disease

- [Bipolar Disorder](#)
- [Genetic Predisposition to Disease](#)
- [Mental Disorders](#)
- [Neuropsychological Tests](#)
- [Schizophrenia](#)