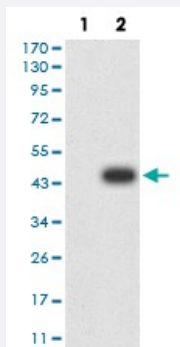


CBX7 monoclonal antibody, clone 3H9D7

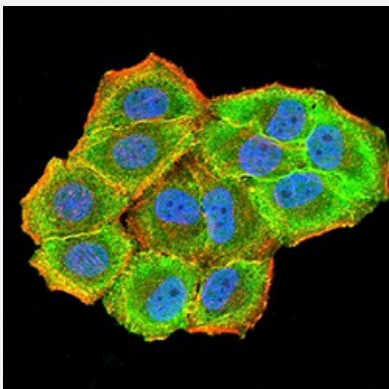
Catalog # MAB17281 Size 100 ug

Applications



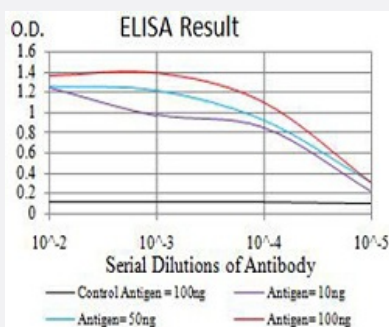
Western Blot (Transfected lysate)

Western Blot analysis of (1) HEK293 cells, (2) CBX7-hlgGfc transfected HEK293 cell lysate.



Immunocytochemistry

Immunocytochemical staining of HeLa cells with CBX7 monoclonal antibody (green). DRAQ5 fluorescent DNA dye (blue). Actin filaments have been labeled with Alexa Fluor-555 phalloidin (red).



Enzyme-linked Immunoabsorbent Assay

ELISA analysis of CBX7 monoclonal antibody, clone 3H9D7.

Specification

Product Description

Mouse monoclonal antibody raised against recombinant human CBX7.

Immunogen	Recombinant protein corresponding to amino acid 15-147 of human CBX7 from <i>E. coli</i> .
Host	Mouse
Theoretical MW (kDa)	28.3kDa
Reactivity	Human
Form	Liquid
Isotype	IgG1
Recommend Usage	ELISA (1:10000) Western Blot (1:500-1:2000) Immunohistochemistry Immunocytochemistry (1:50-1:200) Flow Cytometry The optimal working dilution should be determined by the end user.
Storage Buffer	In PBS (0.05% sodium azide).
Storage Instruction	Store at 4°C. For long term storage store at -20°C. Aliquot to avoid repeated freezing and thawing.
Note	This product contains sodium azide: a POISONOUS AND HAZARDOUS SUBSTANCE which should be handled by trained staff only.

Applications

- Western Blot (Transfected lysate)

Western Blot analysis of (1) HEK293 cells, (2) CBX7-hlgGfc transfected HEK293 cell lysate.

- Immunocytochemistry

Immunocytochemical staining of HeLa cells with CBX7 monoclonal antibody (green). DRAQ5 fluorescent DNA dye (blue). Actin filaments have been labeled with Alexa Fluor- 555 phalloidin (red).

- Enzyme-linked Immunoabsorbent Assay

ELISA analysis of CBX7 monoclonal antibody, clone 3H9D7.

Gene Info — CBX7

Entrez GeneID [23492](#)

Gene Name CBX7

Gene Alias	-
Gene Description	chromobox homolog 7
Omim ID	608457
Gene Ontology	Hyperlink
Other Designations	OTTHUMP00000028984