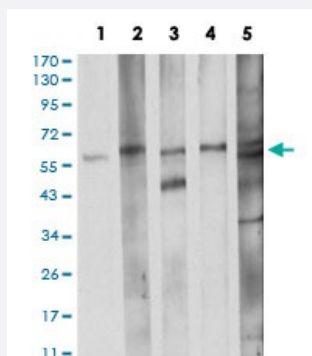


CDC37 monoclonal antibody, clone 6B3B7

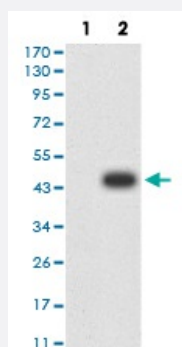
Catalog # MAB17279 Size 100 ug

Applications



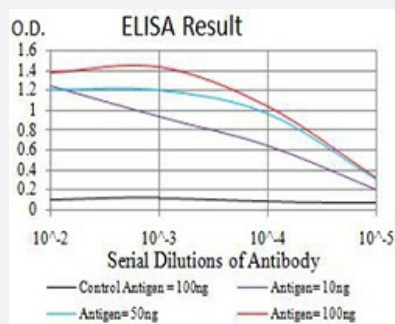
Western Blot (Cell lysate)

Western blot analysis of Lane 1: K562 cell; Lane 2: LNcap cell; Lane 3: A431 cell; Lane 4: HEK293 cell; Lane 5: C2C12 cell with CDC37 monoclonal antibody.



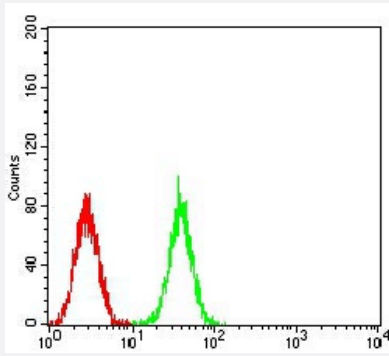
Western Blot (Transfected lysate)

Western Blot analysis of (1) HEK293 cells, (2) CDC37-hlgGfc transfected HEK293 cell lysate.



Enzyme-linked Immunoabsorbent Assay

ELISA analysis of CDC37 monoclonal antibody, clone 6B3B7.



Flow Cytometry

Flow cytometric analysis of K562 cells with CDC37 monoclonal antibody (green) and negative control (red).

Specification

Product Description	Mouse monoclonal antibody raised against recombinant human CDC37.
Immunogen	Recombinant protein corresponding to amino acid 241-378 of human CDC37 from <i>E. coli</i> .
Host	Mouse
Theoretical MW (kDa)	44.5kDa
Reactivity	Human, Mouse
Form	Liquid
Isotype	IgG2a
Recommend Usage	ELISA (1:10000) Western Blot (1:500-1:2000) Immunohistochemistry Immunocytochemistry Flow Cytometry (1:200-1:400) The optimal working dilution should be determined by the end user.
Storage Buffer	In PBS (0.05% sodium azide).
Storage Instruction	Store at 4°C. For long term storage store at -20°C. Aliquot to avoid repeated freezing and thawing.
Note	This product contains sodium azide: a POISONOUS AND HAZARDOUS SUBSTANCE which should be handled by trained staff only.

Applications

- Western Blot (Cell lysate)

Western blot analysis of Lane 1: K562 cell; Lane 2: LNCap cell; Lane 3: A431 cell; Lane 4: HEK293 cell; Lane 5: C2C12 cell with CDC37 monoclonal antibody.

- Western Blot (Transfected lysate)

Western Blot analysis of (1) HEK293 cells, (2) CDC37-hlgGFc transfected HEK293 cell lysate.

- Enzyme-linked Immunoabsorbent Assay

ELISA analysis of CDC37 monoclonal antibody, clone 6B3B7.

- Flow Cytometry

Flow cytometric analysis of K562 cells with CDC37 monoclonal antibody (green) and negative control (red).

Gene Info — CDC37

Entrez GeneID	11140
Gene Name	CDC37
Gene Alias	P50CDC37
Gene Description	cell division cycle 37 homolog (S. cerevisiae)
Omim ID	605065
Gene Ontology	Hyperlink
Gene Summary	The protein encoded by this gene is highly similar to Cdc 37, a cell division cycle control protein of <i>Saccharomyces cerevisiae</i> . This protein is a molecular chaperone with specific function in cell signal transduction. It has been shown to form complex with Hsp90 and a variety of protein kinases including CDK4, CDK6, SRC, RAF-1, MOK, as well as eIF2 alpha kinases. It is thought to play a critical role in directing Hsp90 to its target kinases. [provided by RefSeq]
Other Designations	CDC37 (cell division cycle 37, <i>S. cerevisiae</i> , homolog) CDC37 cell division cycle 37 homolog Hsp90 co-chaperone Cdc37 cell division cycle 37 protein

Disease

- [Adenocarcinoma](#)
- [Genetic Predisposition to Disease](#)
- [Pancreatic Neoplasms](#)