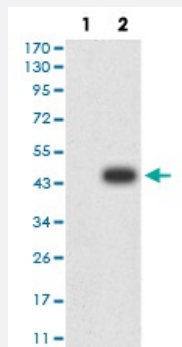


APBA2 monoclonal antibody, clone 1C12A4

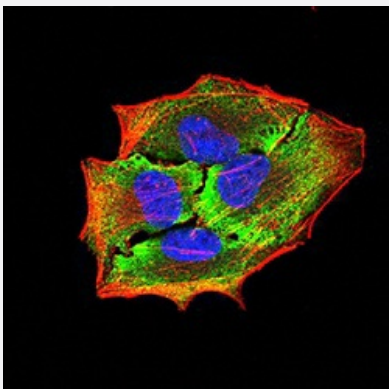
Catalog # MAB17278 Size 100 ug

Applications



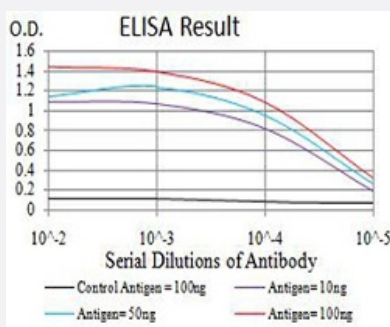
Western Blot (Transfected lysate)

Western Blot analysis of (1) HEK293 cells, (2) APBA2-hlgGfC transfected HEK293 cell lysate.



Immunocytochemistry

Immunocytochemical staining of HeLa cells with APBA2 monoclonal antibody (green). DRAQ5 fluorescent DNA dye (blue). Actin filaments have been labeled with Alexa Fluor-555 phalloidin (red).



Enzyme-linked Immunoabsorbent Assay

ELISA analysis of APBA2 monoclonal antibody, clone 1C12A4.

Specification

Product Description

Mouse monoclonal antibody raised against recombinant human APBA2.

Immunogen	Recombinant protein corresponding to amino acid 15-158 of human APBA2 from <i>E. coli</i> .
Host	Mouse
Theoretical MW (kDa)	82.5kDa
Reactivity	Human
Form	Liquid
Isotype	IgG1
Recommend Usage	ELISA (1:10000) Western Blot (1:500-1:2000) Immunohistochemistry Immunocytochemistry (1:50-1:200) Flow Cytometry The optimal working dilution should be determined by the end user.
Storage Buffer	In PBS (0.05% sodium azide).
Storage Instruction	Store at 4°C. For long term storage store at -20°C. Aliquot to avoid repeated freezing and thawing.
Note	This product contains sodium azide: a POISONOUS AND HAZARDOUS SUBSTANCE which should be handled by trained staff only.

Applications

- Western Blot (Transfected lysate)

Western Blot analysis of (1) HEK293 cells, (2) APBA2-hlgFc transfected HEK293 cell lysate.

- Immunocytochemistry

Immunocytochemical staining of HeLa cells with APBA2 monoclonal antibody (green). DRAQ5 fluorescent DNA dye (blue). Actin filaments have been labeled with Alexa Fluor- 555 phalloidin (red).

- Enzyme-linked Immunoabsorbent Assay

ELISA analysis of APBA2 monoclonal antibody, clone 1C12A4.

Gene Info — APBA2

Entrez GeneID [321](#)

Gene Name APBA2

Gene Alias	D15S1518E, HsT16821, LIN-10, MGC99508, MGC:14091, MINT2, X11L
Gene Description	amyloid beta (A4) precursor protein-binding, family A, member 2
Omim ID	602712
Gene Ontology	Hyperlink
Gene Summary	<p>The protein encoded by this gene is a member of the X11 protein family. It is a neuronal adapter protein that interacts with the Alzheimer's disease amyloid precursor protein (APP). It stabilizes APP and inhibits production of proteolytic APP fragments including the A beta peptide that is deposited in the brains of Alzheimer's disease patients. This gene product is believed to be involved in signal transduction processes. It is also regarded as a putative vesicular trafficking protein in the brain that can form a complex with the potential to couple synaptic vesicle exocytosis to neuronal cell adhesion. Multiple transcript variants encoding different isoforms have been found for this gene. [provided by RefSeq]</p>
Other Designations	X11-like protein adapter protein X11beta amyloid beta (A4) precursor protein-binding, family A, member 2 (X11-like) amyloid beta A4 precursor protein-binding, family A, member 2 neuron-specific X11L protein neuronal munc18-1-interacting protein 2 phosphot

Disease

- [Autistic Disorder](#)
- [Child Development Disorders](#)
- [Chromosome Deletion](#)
- [Genetic Predisposition to Disease](#)
- [Mental Retardation](#)
- [Psychotic Disorders](#)
- [Schizophrenia](#)
- [Tobacco Use Disorder](#)