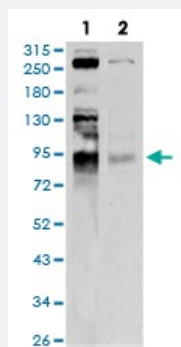


# BRD2 monoclonal antibody, clone 7C1B10

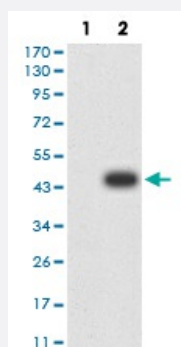
Catalog # MAB17276      Size 100 ug

## Applications



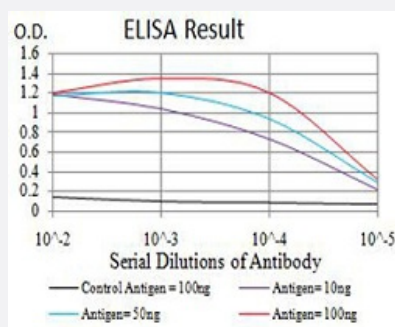
### Western Blot (Cell lysate)

Western blot analysis of Lane 1: C6 cell; Lane 2: HeLa cell with BRD2 monoclonal antibody.



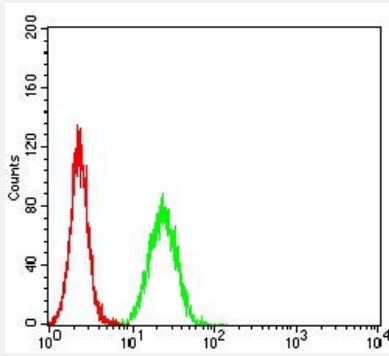
### Western Blot (Transfected lysate)

Western Blot analysis of (1) HEK293 cells, (2) BRD2-hlgGfc transfected HEK293 cell lysate.



### Enzyme-linked Immunoabsorbent Assay

ELISA analysis of BRD2 monoclonal antibody, clone 7C1B10.



## Flow Cytometry

Flow cytometric analysis of HeLa cells with BRD2 monoclonal antibody (green) and negative control (red).

## Specification

<b>Product Description</b>	Mouse monoclonal antibody raised against recombinant human BRD2.
<b>Immunogen</b>	Recombinant protein corresponding to amino acid 227-364 of human BRD2 from <i>E. coli</i> .
<b>Host</b>	Mouse
<b>Theoretical MW (kDa)</b>	88kDa
<b>Reactivity</b>	Human, Rat
<b>Form</b>	Liquid
<b>Isotype</b>	IgG2b
<b>Recommend Usage</b>	ELISA (1:10000) Western Blot (1:500-1:2000) Immunohistochemistry Immunocytochemistry Flow Cytometry (1:200-1:400) The optimal working dilution should be determined by the end user.
<b>Storage Buffer</b>	In PBS (0.05% sodium azide).
<b>Storage Instruction</b>	Store at 4°C. For long term storage store at -20°C. Aliquot to avoid repeated freezing and thawing.
<b>Note</b>	This product contains sodium azide: a POISONOUS AND HAZARDOUS SUBSTANCE which should be handled by trained staff only.

## Applications

- Western Blot (Cell lysate)

Western blot analysis of Lane 1: C6 cell; Lane 2: HeLa cell with BRD2 monoclonal antibody.

- Western Blot (Transfected lysate)

Western Blot analysis of (1) HEK293 cells, (2) BRD2-hlgGfC transfected HEK293 cell lysate.

- Enzyme-linked Immunoabsorbent Assay

ELISA analysis of BRD2 monoclonal antibody, clone 7C1B10.

- Flow Cytometry

Flow cytometric analysis of HeLa cells with BRD2 monoclonal antibody (green) and negative control (red).

## Gene Info — BRD2

Entrez GeneID [6046](#)

Gene Name BRD2

Gene Alias D6S113E, DKFZp686N0336, FLJ31942, FSH, FSRG1, KIAA9001, NAT, RING3, RNF3

Gene Description bromodomain containing 2

Omim ID [601540](#)

Gene Ontology [Hyperlink](#)

**Gene Summary** This gene encodes a transcriptional regulator that belongs to the BET (bromodomains and extra terminal domain) family of proteins. This protein associates with transcription complexes and with acetylated chromatin during mitosis, and it selectively binds to the acetylated lysine-12 residue of histone H4 via its two bromodomains. The gene maps to the major histocompatibility complex (MHC) class II region on chromosome 6p21.3, but sequence comparison suggests that the protein is not involved in the immune response. This gene has been implicated in juvenile myoclonic epilepsy, a common form of epilepsy that becomes apparent in adolescence. Multiple alternatively spliced variants have been described for this gene, but the full-length nature of some of these variants has not been determined. [provided by RefSeq]

**Other Designations** OTTHUMP00000029350|bromodomain-containing 2|female sterile homeotic-related gene 1

## Disease

- [Abortion](#)
- [Alzheimer disease](#)

- [Cerebral Amyloid Angiopathy](#)
- [Epilepsy](#)
- [Genetic Predisposition to Disease](#)
- [Lupus Erythematosus](#)
- [Myoclonic Epilepsy](#)
- [Neuroblastoma](#)
- [Oligospermia](#)
- [Photosensitivity Disorders](#)