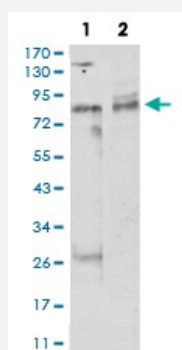


UHRF1 monoclonal antibody, clone 1A1B1

Catalog # MAB17267

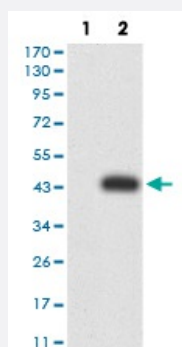
Size 100 ug

Applications



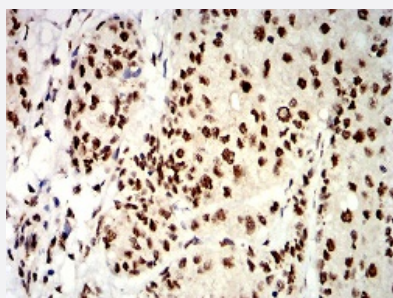
Western Blot (Cell lysate)

Western blot analysis of Lane 1: MCF-7 cell; Lane 2: HeLa cell with UHRF1 monoclonal antibody.



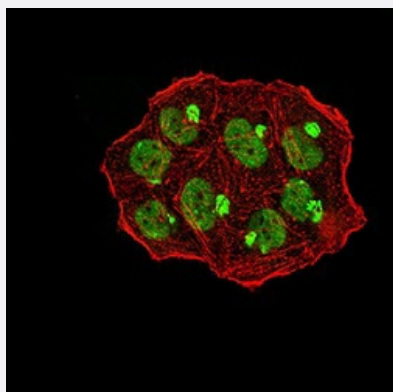
Western Blot (Transfected lysate)

Western Blot analysis of (1) HEK293 cells, (2) UHRF1-hlgGfc transfected HEK293 cell lysate.



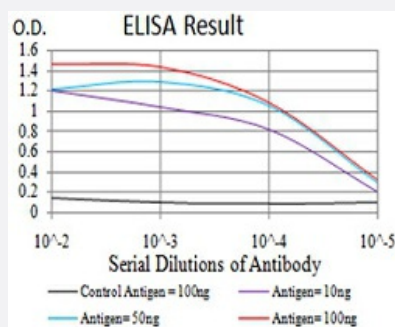
Immunohistochemistry (Formalin/PFA-fixed paraffin-embedded sections)

Immunohistochemical staining of paraffin-embedded bladder cancer tissues with UHRF1 monoclonal antibody.



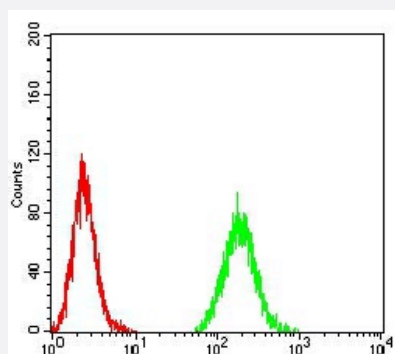
Immunocytochemistry

Immunocytochemical staining of HeLa cells with UHRF1 monoclonal antibody (green). DRAQ5 fluorescent DNA dye (blue). Actin filaments have been labeled with Alexa Fluor-555 phalloidin (red).



Enzyme-linked Immunoabsorbent Assay

ELISA analysis of UHRF1 monoclonal antibody, clone 1A1B1.



Flow Cytometry

Flow cytometric analysis of MCF-7 cells with UHRF1 monoclonal antibody (green) and negative control (red).

Specification

Product Description	Mouse monoclonal antibody raised against recombinant human UHRF1.
Immunogen	Recombinant protein corresponding to amino acid 616-755 of human UHRF1 from <i>E. coli</i> .
Host	Mouse
Theoretical MW (kDa)	89.8kDa
Reactivity	Human
Form	Liquid
Isotype	IgG2b

Recommend Usage	ELISA (1:10000) Western Blot (1:500-1:2000) Immunohistochemistry (1:200-1:1000) Immunocytochemistry (1:200-1:1000) Flow Cytometry (1:200-1:400) The optimal working dilution should be determined by the end user.
Storage Buffer	In PBS (0.05% sodium azide).
Storage Instruction	Store at 4°C. For long term storage store at -20°C. Aliquot to avoid repeated freezing and thawing.
Note	This product contains sodium azide: a POISONOUS AND HAZARDOUS SUBSTANCE which should be handled by trained staff only.

Applications

- Western Blot (Cell lysate)

Western blot analysis of Lane 1: MCF-7 cell; Lane 2: HeLa cell with UHRF1 monoclonal antibody.

- Western Blot (Transfected lysate)

Western Blot analysis of (1) HEK293 cells, (2) UHRF1-hlgFc transfected HEK293 cell lysate.

- Immunohistochemistry (Formalin/PFA-fixed paraffin-embedded sections)

Immunohistochemical staining of paraffin-embedded bladder cancer tissues with UHRF1 monoclonal antibody.

- Immunocytochemistry

Immunocytochemical staining of HeLa cells with UHRF1 monoclonal antibody (green). DRAQ5 fluorescent DNA dye (blue). Actin filaments have been labeled with Alexa Fluor- 555 phalloidin (red).

- Enzyme-linked Immunoabsorbent Assay

ELISA analysis of UHRF1 monoclonal antibody, clone 1A1B1.

- Flow Cytometry

Flow cytometric analysis of MCF-7 cells with UHRF1 monoclonal antibody (green) and negative control (red).

Gene Info — UHRF1

Entrez GeneID [29128](#)

Gene Name UHRF1

Gene Alias	FLJ21925, ICBP90, MGC138707, Np95, RNF106, hNP95
Gene Description	ubiquitin-like with PHD and ring finger domains 1
Omim ID	607990
Gene Ontology	Hyperlink
Gene Summary	<p>This gene encodes a member of a subfamily of RING-finger type E3 ubiquitin ligases. The protein binds to specific DNA sequences, and recruits a histone deacetylase to regulate gene expression. Its expression peaks at late G1 phase and continues during G2 and M phases of the cell cycle. It plays a major role in the G1/S transition by regulating topoisomerase IIalpha and retinoblastoma gene expression, and functions in the p53-dependent DNA damage checkpoint. Multiple transcript variants encoding different isoforms have been found for this gene. [provided by RefSeq]</p>
Other Designations	E3 ubiquitin-protein ligase UHRF1 RING finger protein 106 inverted CCAAT box-binding protein of 90 kDa nuclear zinc finger protein Np95 transcription factor ICBP90 ubiquitin-like, containing PHD and RING finger domains, 1

Disease

- [Cerebral Hemorrhage](#)
- [Genetic Predisposition to Disease](#)
- [Hypertension](#)
- [Intracranial Hemorrhages](#)
- [Stroke](#)
- [Subarachnoid Hemorrhage](#)