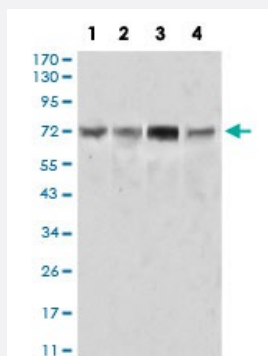


# SYK monoclonal antibody, clone 3D1G10

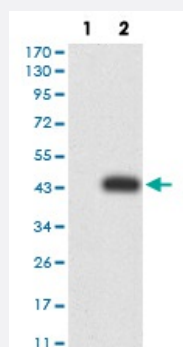
Catalog # MAB17255      Size 100 ug

## Applications



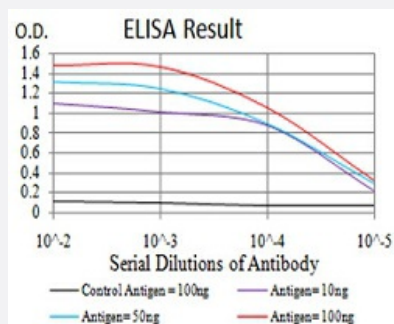
### Western Blot (Cell lysate)

Western blot analysis of Lane 1: Ramos cell; Lane 2: HEK293 cell; Lane 3: Raji cell; Lane 4: A431 cell with SYK monoclonal antibody.



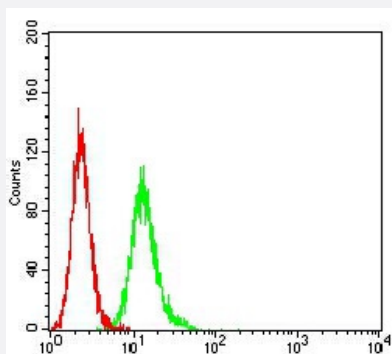
### Western Blot (Transfected lysate)

Western Blot analysis of (1) HEK293 cells, (2) SYK-hlgGfC transfected HEK293 cell lysate.



### Enzyme-linked Immunoabsorbent Assay

ELISA analysis of SYK monoclonal antibody, clone 3D1G10.



## Flow Cytometry

Flow cytometric analysis of HeLa cells with SYK monoclonal antibody (green) and negative control (red).

## Specification

<b>Product Description</b>	Mouse monoclonal antibody raised against recombinant human SYK.
<b>Immunogen</b>	Recombinant protein corresponding to amino acid 217-356 of human SYK from <i>E. coli</i> .
<b>Host</b>	Mouse
<b>Theoretical MW (kDa)</b>	72kDa
<b>Reactivity</b>	Human
<b>Form</b>	Liquid
<b>Isotype</b>	IgG1
<b>Recommend Usage</b>	ELISA (1:10000) Western Blot (1:500-1:2000) Immunohistochemistry Immunocytochemistry Flow Cytometry (1:200-1:400) The optimal working dilution should be determined by the end user.
<b>Storage Buffer</b>	In PBS (0.05% sodium azide).
<b>Storage Instruction</b>	Store at 4°C. For long term storage store at -20°C. Aliquot to avoid repeated freezing and thawing.
<b>Note</b>	This product contains sodium azide: a POISONOUS AND HAZARDOUS SUBSTANCE which should be handled by trained staff only.

## Applications

- Western Blot (Cell lysate)

Western blot analysis of Lane 1: Ramos cell; Lane 2: HEK293 cell; Lane 3: Raji cell; Lane 4: A431 cell with SYK monoclonal antibody.

- Western Blot (Transfected lysate)

Western Blot analysis of (1) HEK293 cells, (2) SYK-hlgGFc transfected HEK293 cell lysate.

- Enzyme-linked Immunoabsorbent Assay

ELISA analysis of SYK monoclonal antibody, clone 3D1G10.

- Flow Cytometry

Flow cytometric analysis of HeLa cells with SYK monoclonal antibody (green) and negative control (red).

## Gene Info — SYK

Entrez GeneID	<a href="#">6850</a>
Gene Name	SYK
Gene Alias	DKFZp313N1010, FLJ25043, FLJ37489
Gene Description	spleen tyrosine kinase
Omim ID	<a href="#">600085</a>
Gene Ontology	<a href="#">Hyperlink</a>
Other Designations	OTTHUMP00000021627 OTTHUMP00000021628

## Pathway

- [B cell receptor signaling pathway](#)
- [Fc epsilon RI signaling pathway](#)
- [Fc gamma R-mediated phagocytosis](#)
- [Natural killer cell mediated cytotoxicity](#)

## Disease

- [Lymphedema](#)
- [Lymphoproliferative Disorders](#)
- [Myelodysplastic Syndromes](#)
- [Tobacco Use Disorder](#)