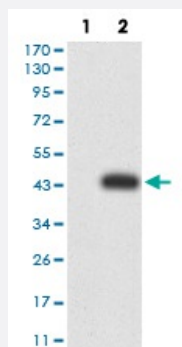


SYK monoclonal antibody, clone 2G11E6

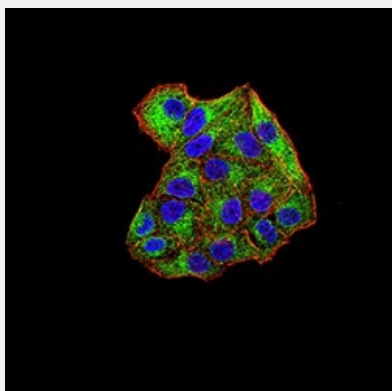
Catalog # MAB17254 Size 100 ug

Applications



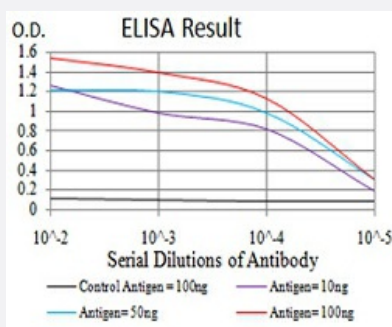
Western Blot (Transfected lysate)

Western Blot analysis of (1) HEK293 cells, (2) SYK-hlgGfC transfected HEK293 cell lysate.



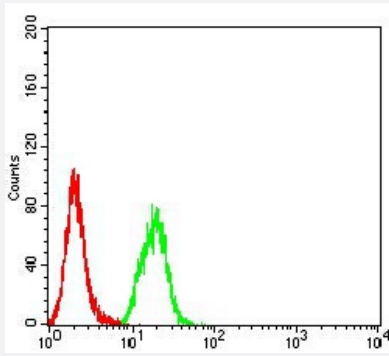
Immunocytochemistry

Immunocytochemical staining of HeLa cells with SYK monoclonal antibody (green). DRAQ5 fluorescent DNA dye (blue). Actin filaments have been labeled with Alexa Fluor- 555 phalloidin (red).



Enzyme-linked Immunoabsorbent Assay

ELISA analysis of SYK monoclonal antibody, clone 2G11E6.



Flow Cytometry

Flow cytometric analysis of HeLa cells with SYK monoclonal antibody (green) and negative control (red).

Specification

Product Description	Mouse monoclonal antibody raised against recombinant human SYK.
Immunogen	Recombinant protein corresponding to amino acid 217-356 of human SYK from <i>E. coli</i> .
Host	Mouse
Theoretical MW (kDa)	72kDa
Reactivity	Human
Form	Liquid
Isotype	IgG1
Recommend Usage	ELISA (1:10000) Western Blot (1:500-1:2000) Immunohistochemistry Immunocytochemistry (1:50-1:250) Flow Cytometry (1:200-1:400) The optimal working dilution should be determined by the end user.
Storage Buffer	In PBS (0.05% sodium azide).
Storage Instruction	Store at 4°C. For long term storage store at -20°C. Aliquot to avoid repeated freezing and thawing.
Note	This product contains sodium azide: a POISONOUS AND HAZARDOUS SUBSTANCE which should be handled by trained staff only.

Applications

- Western Blot (Transfected lysate)

Western Blot analysis of (1) HEK293 cells, (2) SYK-hlgGFc transfected HEK293 cell lysate.

- Immunocytochemistry

Immunocytochemical staining of HeLa cells with SYK monoclonal antibody (green). DRAQ5 fluorescent DNA dye (blue). Actin filaments have been labeled with Alexa Fluor- 555 phalloidin (red).

- Enzyme-linked Immunoabsorbent Assay

ELISA analysis of SYK monoclonal antibody, clone 2G11E6.

- Flow Cytometry

Flow cytometric analysis of HeLa cells with SYK monoclonal antibody (green) and negative control (red).

Gene Info — SYK

Entrez GeneID	6850
Gene Name	SYK
Gene Alias	DKFZp313N1010, FLJ25043, FLJ37489
Gene Description	spleen tyrosine kinase
Omim ID	600085
Gene Ontology	Hyperlink
Other Designations	OTTHUMP00000021627 OTTHUMP00000021628

Pathway

- [B cell receptor signaling pathway](#)
- [Fc epsilon RI signaling pathway](#)
- [Fc gamma R-mediated phagocytosis](#)
- [Natural killer cell mediated cytotoxicity](#)

Disease

- [Lymphedema](#)
- [Lymphoproliferative Disorders](#)
- [Myelodysplastic Syndromes](#)
- [Tobacco Use Disorder](#)