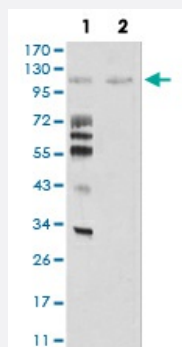


MIB1 monoclonal antibody, clone 6A9C9

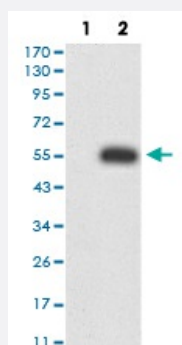
Catalog # MAB17253 Size 100 ug

Applications



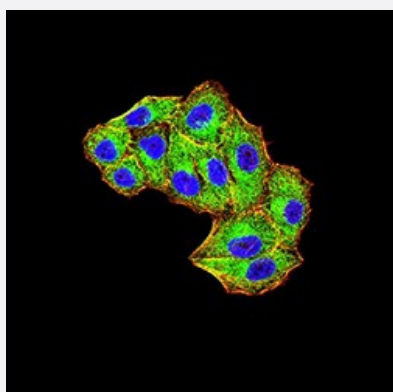
Western Blot (Cell lysate)

Western blot analysis of Lane 1: HeLa cell; Lane 2: COS-7 cell with MIB1 monoclonal antibody.



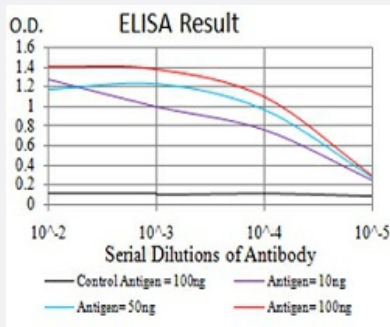
Western Blot (Transfected lysate)

Western Blot analysis of (1) HEK293 cells, (2) MIB1-hlgGfc transfected HEK293 cell lysate.



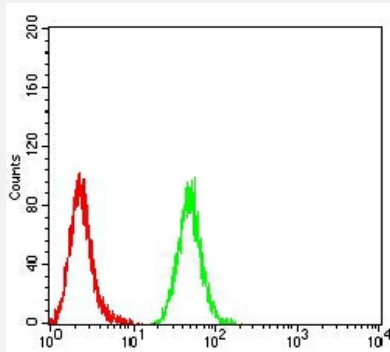
Immunocytochemistry

Immunocytochemical staining of HeLa cells with MIB1 monoclonal antibody (green). DRAQ5 fluorescent DNA dye (blue). Actin filaments have been labeled with Alexa Fluor- 555 phalloidin (red).



Enzyme-linked Immunoabsorbent Assay

ELISA analysis of MIB1 monoclonal antibody, clone 6A9C9.



Flow Cytometry

Flow cytometric analysis of HeLa cells with MIB1 monoclonal antibody (green) and negative control (red).

Specification

Product Description	Mouse monoclonal antibody raised against recombinant human MIB1.
Immunogen	Recombinant protein corresponding to amino acid 6-221 of human MIB1 from <i>E. coli</i> .
Host	Mouse
Theoretical MW (kDa)	110kDa
Reactivity	Human, Monkey
Form	Liquid
Isotype	IgG1
Recommend Usage	ELISA (1:10000) Western Blot (1:500-1:2000) Immunohistochemistry Immunocytochemistry (1:200-1:1000) Flow Cytometry (1:200-1:400) The optimal working dilution should be determined by the end user.
Storage Buffer	In PBS (0.05% sodium azide).
Storage Instruction	Store at 4°C. For long term storage store at -20°C. Aliquot to avoid repeated freezing and thawing.

Note

This product contains sodium azide: a POISONOUS AND HAZARDOUS SUBSTANCE which should be handled by trained staff only.

Applications

- Western Blot (Cell lysate)

Western blot analysis of Lane 1: HeLa cell; Lane 2: COS-7 cell with MIB1 monoclonal antibody.

- Western Blot (Transfected lysate)

Western Blot analysis of (1) HEK293 cells, (2) MIB1-hlgGFc transfected HEK293 cell lysate.

- Immunocytochemistry

Immunocytochemical staining of HeLa cells with MIB1 monoclonal antibody (green). DRAQ5 fluorescent DNA dye (blue). Actin filaments have been labeled with Alexa Fluor- 555 phalloidin (red).

- Enzyme-linked Immunoabsorbent Assay

ELISA analysis of MIB1 monoclonal antibody, clone 6A9C9.

- Flow Cytometry

Flow cytometric analysis of HeLa cells with MIB1 monoclonal antibody (green) and negative control (red).

Gene Info — MIB1

Entrez GeneID	57534
---------------	-----------------------

Gene Name	MIB1
-----------	------

Gene Alias	DIP-1, DKFZp686l0769, DKFZp761M1710, FLJ90676, MGC129659, MGC129660, MIB, ZZAN K2, ZZZ6
------------	---

Gene Description	mindbomb homolog 1 (Drosophila)
------------------	---------------------------------

Omim ID	608677
---------	------------------------

Gene Ontology	Hyperlink
---------------	---------------------------

Other Designations	DAPK-interacting protein 1 mindbomb homolog 1 ubiquitin ligase mind bomb
--------------------	--