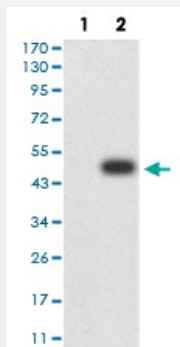


ESRRA monoclonal antibody, clone 1A6E11

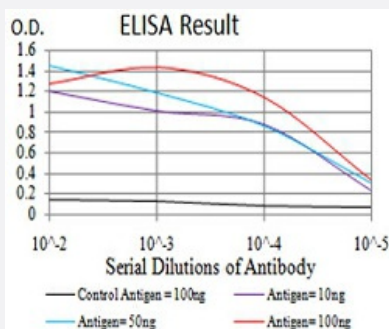
Catalog # MAB17250 Size 100 ug

Applications



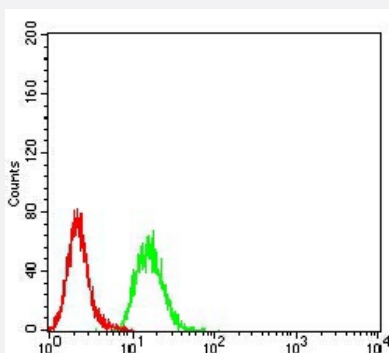
Western Blot (Transfected lysate)

Western Blot analysis of (1) HEK293 cells, (2) ESRRA-hlgGFc transfected HEK293 cell lysate.



Enzyme-linked Immunoabsorbent Assay

ELISA analysis of ESRRA monoclonal antibody, clone 1A6E11.



Flow Cytometry

Flow cytometric analysis of HeLa cells with ESRRA monoclonal antibody (green) and negative control (red).

Specification

Product Description

Mouse monoclonal antibody raised against recombinant human ESRRA.

Immunogen	Recombinant protein corresponding to amino acid 198-376 of human ESRRA from <i>E. coli</i> .
Host	Mouse
Theoretical MW (kDa)	45.5kDa
Reactivity	Human
Form	Liquid
Isotype	IgG1
Recommend Usage	ELISA (1:10000) Western Blot (1:500-1:2000) Immunohistochemistry Immunocytochemistry Flow Cytometry (1:200-1:400) The optimal working dilution should be determined by the end user.
Storage Buffer	In PBS (0.05% sodium azide).
Storage Instruction	Store at 4°C. For long term storage store at -20°C. Aliquot to avoid repeated freezing and thawing.
Note	This product contains sodium azide: a POISONOUS AND HAZARDOUS SUBSTANCE which should be handled by trained staff only.

Applications

- Western Blot (Transfected lysate)

Western Blot analysis of (1) HEK293 cells, (2) ESRRA-hlgFc transfected HEK293 cell lysate.

- Enzyme-linked Immunoabsorbent Assay

ELISA analysis of ESRRA monoclonal antibody, clone 1A6E11.

- Flow Cytometry

Flow cytometric analysis of HeLa cells with ESRRA monoclonal antibody (green) and negative control (red).

Gene Info — ESRRA

Entrez GeneID	2101
Gene Name	ESRRA
Gene Alias	ERR1, ERRa, ERRalpha, ESRL1, NR3B1

Gene Description	estrogen-related receptor alpha
Omim ID	601998
Gene Ontology	Hyperlink
Gene Summary	<p>The protein encoded by this gene is a nuclear receptor that is closely related to the estrogen receptor. This protein acts as a site-specific transcription regulator and has been also shown to interact with estrogen and the transcription factor TFIIIB by direct protein-protein contact. The binding and regulatory activities of this protein have been demonstrated in the regulation of a variety of genes including lactoferrin, osteopontin, medium-chain acyl coenzyme A dehydrogenase (MCAD) and thyroid hormone receptor genes. A processed pseudogene of ESRRA is located on chromosome 13q12.1. [provided by RefSeq]</p>
Other Designations	estrogen receptor-like 1

Disease

- [Cardiovascular Diseases](#)
- [Diabetes Mellitus](#)
- [Edema](#)
- [Genetic Predisposition to Disease](#)
- [Neoplasms](#)
- [Obesity](#)
- [Ovarian cancer](#)
- [Ovarian Neoplasms](#)