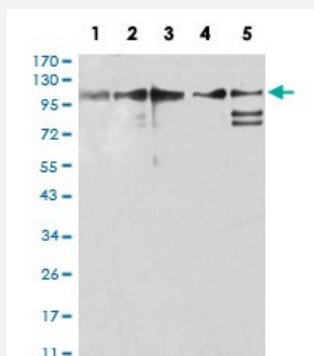


ZFP91 monoclonal antibody, clone 7G11H2

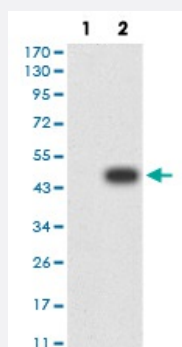
Catalog # MAB17248 Size 100 ug

Applications



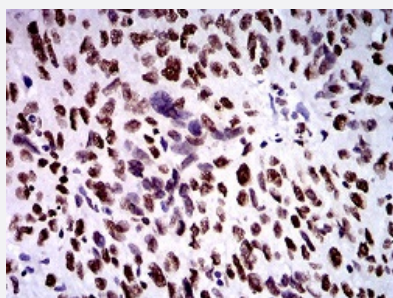
Western Blot (Cell lysate)

Western blot analysis of Lane 1: Jurkat cell; Lane 2: A431 cell; Lane 3: HepG2 cell; Lane 4: HEK293 cell; Lane 5: A549 cell with ZFP91 monoclonal antibody.



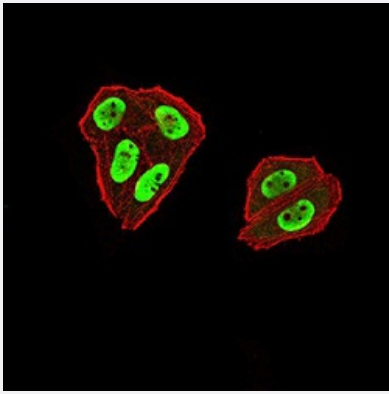
Western Blot (Transfected lysate)

Western Blot analysis of (1) HEK293 cells, (2) ZFP91-hlgGfc transfected HEK293 cell lysate.



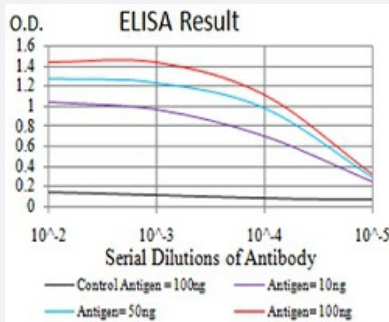
Immunohistochemistry (Formalin/PFA-fixed paraffin-embedded sections)

Immunohistochemical staining of paraffin-embedded ovarian cancer tissues with ZFP91 monoclonal antibody.



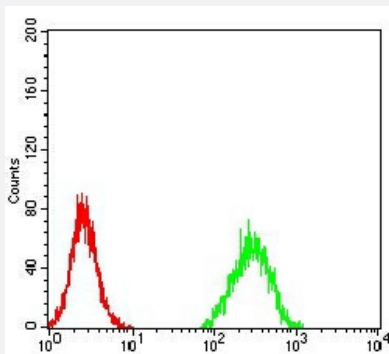
Immunocytochemistry

Immunocytochemical staining of HeLa cells with ZFP91 monoclonal antibody (green). DRAQ5 fluorescent DNA dye (blue). Actin filaments have been labeled with Alexa Fluor-555 phalloidin (red).



Enzyme-linked Immunoabsorbent Assay

ELISA analysis of ZFP91 monoclonal antibody, clone 7G11H2.



Flow Cytometry

Flow cytometric analysis of HeLa cells with ZFP91 monoclonal antibody (green) and negative control (red).

Specification

Product Description	Mouse monoclonal antibody raised against recombinant human ZFP91.
Immunogen	Recombinant protein corresponding to amino acid 162-304 of human ZFP91 from <i>E. coli</i> .
Host	Mouse
Theoretical MW (kDa)	63.4kDa
Reactivity	Human
Form	Liquid
Isotype	IgG1

Recommend Usage	ELISA (1:10000) Western Blot (1:500-1:2000) Immunohistochemistry (1:200-1:1000) Immunocytochemistry (1:100-1:500) Flow Cytometry (1:200-1:400) The optimal working dilution should be determined by the end user.
Storage Buffer	In PBS (0.05% sodium azide).
Storage Instruction	Store at 4°C. For long term storage store at -20°C. Aliquot to avoid repeated freezing and thawing.
Note	This product contains sodium azide: a POISONOUS AND HAZARDOUS SUBSTANCE which should be handled by trained staff only.

Applications

- Western Blot (Cell lysate)

Western blot analysis of Lane 1: Jurkat cell; Lane 2: A431 cell; Lane 3: HepG2 cell; Lane 4: HEK293 cell; Lane 5: A549 cell with ZFP91 monoclonal antibody.

- Western Blot (Transfected lysate)

Western Blot analysis of (1) HEK293 cells, (2) ZFP91-hlgGFc transfected HEK293 cell lysate.

- Immunohistochemistry (Formalin/PFA-fixed paraffin-embedded sections)

Immunohistochemical staining of paraffin-embedded ovarian cancer tissues with ZFP91 monoclonal antibody.

- Immunocytochemistry

Immunocytochemical staining of HeLa cells with ZFP91 monoclonal antibody (green). DRAQ5 fluorescent DNA dye (blue). Actin filaments have been labeled with Alexa Fluor- 555 phalloidin (red).

- Enzyme-linked Immunoabsorbent Assay

ELISA analysis of ZFP91 monoclonal antibody, clone 7G11H2.

- Flow Cytometry

Flow cytometric analysis of HeLa cells with ZFP91 monoclonal antibody (green) and negative control (red).

Gene Info — ZFP91

Entrez GeneID [80829](#)

Gene Name ZFP91

Gene Alias	FKSG11, PZF, ZNF757
Gene Description	zinc finger protein 91 homolog (mouse)
Gene Ontology	Hyperlink
Gene Summary	<p>The protein encoded by this gene is a member of the zinc finger family of proteins. The gene product contains C2H2 type domains, which are the classical zinc finger domains found in numerous nucleic acid-binding proteins. A read-through transcript variant composed of ZFP91 and CNTF sequence has been identified, but it is thought to be non-coding. Read-through transcription of ZFP91 and CNTF has also been observed in mouse. A pseudogene has also been identified on chromosome 2. [provided by RefSeq]</p>
Other Designations	zinc finger protein 91 zinc finger protein homologous to Zfp91 in mouse

Disease

- [Kidney Failure](#)