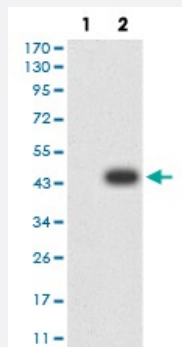


CDCP1 monoclonal antibody, clone 5G3H11

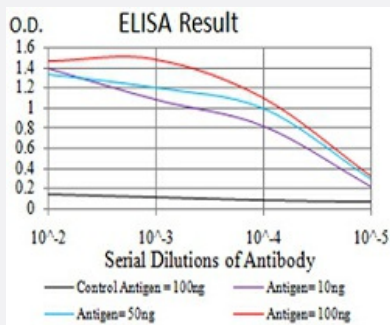
Catalog # MAB17245 Size 100 ug

Applications



Western Blot (Transfected lysate)

Western Blot analysis of (1) HEK293 cells, (2) CDCP1-hlgGfC transfected HEK293 cell lysate.



Enzyme-linked Immunoabsorbent Assay

ELISA analysis of CDCP1 monoclonal antibody, clone 5G3H11.

Specification

Product Description	Mouse monoclonal antibody raised against recombinant human CDCP1.
Immunogen	Recombinant protein corresponding to amino acid 692-836 of human CDCP1 from <i>E. coli</i> .
Host	Mouse
Theoretical MW (kDa)	93kDa
Reactivity	Human
Form	Liquid
Isotype	IgG1

Recommend Usage	ELISA (1:10000) Western Blot (1:500-1:2000) Immunohistochemistry (1:200-1:1000) Immunocytochemistry Flow Cytometry The optimal working dilution should be determined by the end user.
Storage Buffer	In PBS (0.05% sodium azide).
Storage Instruction	Store at 4°C. For long term storage store at -20°C. Aliquot to avoid repeated freezing and thawing.
Note	This product contains sodium azide: a POISONOUS AND HAZARDOUS SUBSTANCE which should be handled by trained staff only.

Applications

- Western Blot (Transfected lysate)

Western Blot analysis of (1) HEK293 cells, (2) CDCP1-hlgGFc transfected HEK293 cell lysate.

- Enzyme-linked Immunoabsorbent Assay

ELISA analysis of CDCP1 monoclonal antibody, clone 5G3H11.

Gene Info — CDCP1

Entrez GeneID	64866
Gene Name	CDCP1
Gene Alias	CD318, SIMA135, TRASK
Gene Description	CUB domain containing protein 1
Gene Ontology	Hyperlink
Gene Summary	<p>The protein encoded by this gene is a transmembrane protein containing three extracellular CUB domains. This protein is found to be overexpressed in colon and lung cancers. Its expression level is correlated with the metastatic ability of carcinoma cells. This protein is located on the cell surface. It has been shown to be tyrosine phosphorylated in a cancer cell line. Alternatively spliced transcript variants encoding distinct isoforms have been reported. [provided by RefSeq]</p>
Other Designations	CUB domain-containing protein 1 OTTHUMP00000164120 transmembrane and associated with src kinases