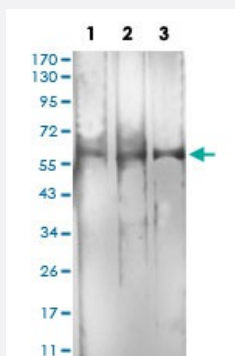


# hCG\_1776007 monoclonal antibody, clone 1H3B2

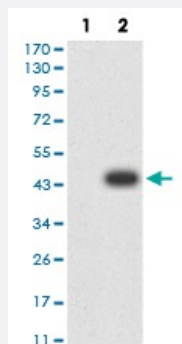
Catalog # MAB17244      Size 100 ug

## Applications



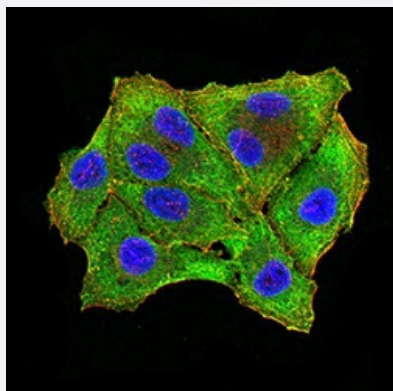
### Western Blot (Cell lysate)

Western blot analysis of Lane 1: C2C12 cell; Lane 2: RAW264.7 cell; Lane 3: U251 cell with hCG\_1776007 monoclonal antibody.



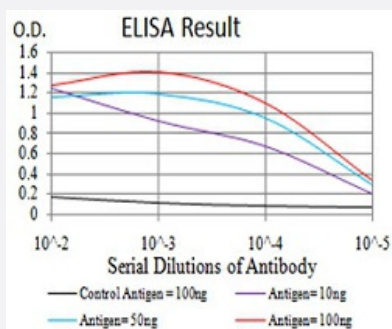
### Western Blot (Transfected lysate)

Western Blot analysis of (1) HEK293 cells, (2) hCG\_1776007-hlgGfc transfected HEK293 cell lysate.



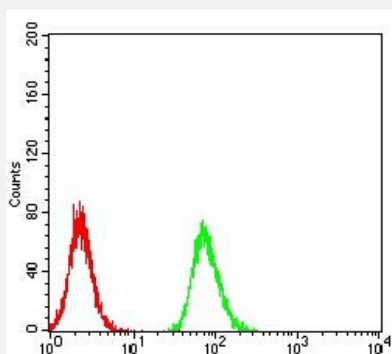
### Immunocytochemistry

Immunocytochemical staining of HeLa cells with hCG\_1776007 monoclonal antibody (green). DRAQ5 fluorescent DNA dye (blue). Actin filaments have been labeled with Alexa Fluor-555 phalloidin (red).



## Enzyme-linked Immunoabsorbent Assay

ELISA analysis of hCG\_1776007 monoclonal antibody, clone 1H3B2.



## Flow Cytometry

Flow cytometric analysis of HeLa cells with hCG\_1776007 monoclonal antibody (green) and negative control (red).

## Specification

<b>Product Description</b>	Mouse monoclonal antibody raised against recombinant human hCG_1776007.
<b>Immunogen</b>	Recombinant protein corresponding to amino acid 1-140 of human hCG_1776007 from <i>E. coli</i> .
<b>Host</b>	Mouse
<b>Theoretical MW (kDa)</b>	33.8kDa
<b>Reactivity</b>	Human, Mouse
<b>Form</b>	Liquid
<b>Isotype</b>	IgG2a
<b>Recommend Usage</b>	ELISA (1:10000) Western Blot (1:500-1:2000) Immunohistochemistry Immunocytochemistry (1:200-1:1000) Flow Cytometry (1:200-1:400) The optimal working dilution should be determined by the end user.
<b>Storage Buffer</b>	In PBS (0.05% sodium azide).
<b>Storage Instruction</b>	Store at 4°C. For long term storage store at -20°C. Aliquot to avoid repeated freezing and thawing.

**Note**

This product contains sodium azide: a POISONOUS AND HAZARDOUS SUBSTANCE which should be handled by trained staff only.

## Applications

- Western Blot (Cell lysate)

Western blot analysis of Lane 1: C2C12 cell; Lane 2: RAW264.7 cell; Lane 3: U251 cell with hCG\_1776007 monoclonal antibody.

- Western Blot (Transfected lysate)

Western Blot analysis of (1) HEK293 cells, (2) hCG\_1776007-hlgGFc transfected HEK293 cell lysate.

- Immunocytochemistry

Immunocytochemical staining of HeLa cells with hCG\_1776007 monoclonal antibody (green). DRAQ5 fluorescent DNA dye (blue). Actin filaments have been labeled with Alexa Fluor- 555 phalloidin (red).

- Enzyme-linked Immunoabsorbent Assay

ELISA analysis of hCG\_1776007 monoclonal antibody, clone 1H3B2.

- Flow Cytometry

Flow cytometric analysis of HeLa cells with hCG\_1776007 monoclonal antibody (green) and negative control (red).

## Gene Info — hCG\_1776007

**Entrez GeneID** [146713](#)

**Gene Name** hCG\_1776007

**Gene Alias** FLJ56884, FLJ58356, FOX3, HRNBP3

**Gene Description** hexaribonucleotide binding protein 3

**Gene Ontology** [Hyperlink](#)

**Other Designations** -

## Disease

- [Tobacco Use Disorder](#)