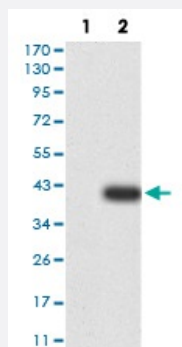


UFD1L monoclonal antibody, clone 4F11A4

Catalog # MAB17234

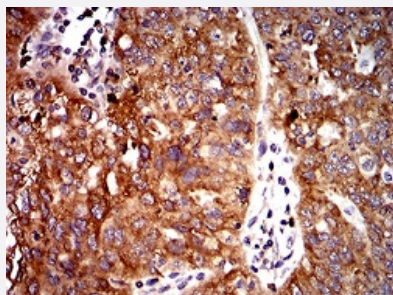
Size 100 ug

Applications



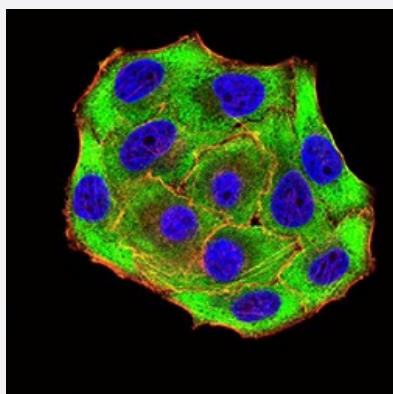
Western Blot (Transfected lysate)

Western Blot analysis of (1) HEK293 cells, (2) UFD1L-hlgGfC transfected HEK293 cell lysate.



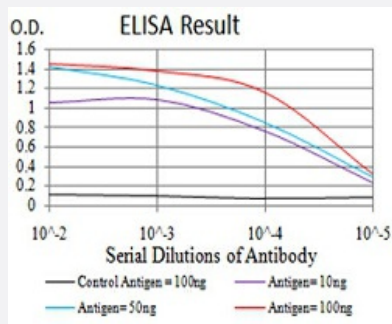
Immunohistochemistry (Formalin/PFA-fixed paraffin-embedded sections)

Immunohistochemical staining of paraffin-embedded ovarian cancer tissues with UFD1L monoclonal antibody.



Immunocytochemistry

Immunocytochemical staining of HeLa cells with UFD1L monoclonal antibody (green). DRAQ5 fluorescent DNA dye (blue). Actin filaments have been labeled with Alexa Fluor-555 phalloidin (red).



Enzyme-linked Immunoabsorbent Assay

ELISA analysis of UFD1L monoclonal antibody, clone 4F11A4.

Specification

Product Description	Mouse monoclonal antibody raised against recombinant human UFD1L.
Immunogen	Recombinant protein corresponding to amino acid 208-307 of human UFD1L from <i>E. coli</i> .
Host	Mouse
Theoretical MW (kDa)	34.5kDa
Reactivity	Human
Form	Liquid
Isotype	IgG1
Recommend Usage	ELISA (1:10000) Western Blot (1:500-1:2000) Immunohistochemistry (1:200-1:1000) Immunocytochemistry (1:200-1:1000) Flow Cytometry The optimal working dilution should be determined by the end user.
Storage Buffer	In PBS (0.05% sodium azide).
Storage Instruction	Store at 4°C. For long term storage store at -20°C. Aliquot to avoid repeated freezing and thawing.
Note	This product contains sodium azide: a POISONOUS AND HAZARDOUS SUBSTANCE which should be handled by trained staff only.

Applications

- Western Blot (Transfected lysate)

Western Blot analysis of (1) HEK293 cells, (2) UFD1L-hlgGFc transfected HEK293 cell lysate.

- Immunohistochemistry (Formalin/PFA-fixed paraffin-embedded sections)

Immunohistochemical staining of paraffin-embedded ovarian cancer tissues with UFD1L monoclonal antibody.

- Immunocytochemistry

Immunocytochemical staining of HeLa cells with UFD1L monoclonal antibody (green). DRAQ5 fluorescent DNA dye (blue). Actin filaments have been labeled with Alexa Fluor- 555 phalloidin (red).

- Enzyme-linked Immunoabsorbent Assay

ELISA analysis of UFD1L monoclonal antibody, clone 4F11A4.

Gene Info — UFD1L

Entrez GeneID [7353](#)

Gene Name UFD1L

Gene Alias UFD1

Gene Description ubiquitin fusion degradation 1 like (yeast)

Omim ID [601754](#)

Gene Ontology [Hyperlink](#)

Gene Summary The protein encoded by this gene forms a complex with two other proteins, nuclear protein localization-4 and valosin-containing protein, and this complex is necessary for the degradation of ubiquitinated proteins. In addition, this complex controls the disassembly of the mitotic spindle and the formation of a closed nuclear envelope after mitosis. Mutations in this gene have been associated with Catch 22 syndrome as well as cardiac and craniofacial defects. Alternative splicing results in multiple transcript variants encoding different isoforms. A related pseudogene has been identified on chromosome 18. [provided by RefSeq]

Other Designations UB fusion protein 1|ubiquitin fusion degradation 1-like|ubiquitin fusion degradation protein 1 homolog

Disease

- [Cleft Lip](#)
- [Cleft Palate](#)

- [Genetic Predisposition to Disease](#)
- [Schizophrenia](#)