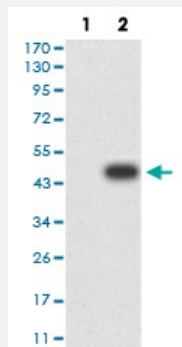


# DAPP1 monoclonal antibody, clone 2F7A9

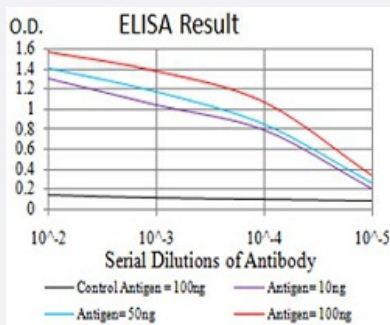
Catalog # MAB17230 Size 100 ug

## Applications



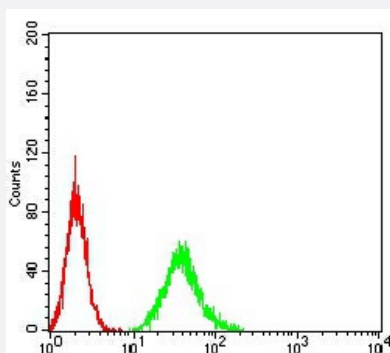
### Western Blot (Transfected lysate)

Western Blot analysis of (1) HEK293 cells, (2) DAPP1-hlgFc transfected HEK293 cell lysate.



### Enzyme-linked Immunoabsorbent Assay

ELISA analysis of DAPP1 monoclonal antibody, clone 2F7A9.



### Flow Cytometry

Flow cytometric analysis of A549 cells with DAPP1 monoclonal antibody (green) and negative control (red).

## Specification

### Product Description

Mouse monoclonal antibody raised against recombinant human DAPP1.

Immunogen	Recombinant protein corresponding to amino acid 127-276 of human DAPP1 from <i>E. coli</i> .
Host	Mouse
Theoretical MW (kDa)	32.2kDa
Reactivity	Human
Form	Liquid
Isotype	IgG1
Recommend Usage	ELISA (1:10000) Western Blot (1:500-1:2000) Immunohistochemistry Immunocytochemistry Flow Cytometry (1:200-1:400) The optimal working dilution should be determined by the end user.
Storage Buffer	In PBS (0.05% sodium azide).
Storage Instruction	Store at 4°C. For long term storage store at -20°C. Aliquot to avoid repeated freezing and thawing.
Note	This product contains sodium azide: a POISONOUS AND HAZARDOUS SUBSTANCE which should be handled by trained staff only.

## Applications

- Western Blot (Transfected lysate)

Western Blot analysis of (1) HEK293 cells, (2) DAPP1-hlgGfc transfected HEK293 cell lysate.

- Enzyme-linked Immunoabsorbent Assay

ELISA analysis of DAPP1 monoclonal antibody, clone 2F7A9.

- Flow Cytometry

Flow cytometric analysis of A549 cells with DAPP1 monoclonal antibody (green) and negative control (red).

## Gene Info — DAPP1

Entrez GeneID	<a href="#">27071</a>
Gene Name	DAPP1
Gene Alias	BAM32, DKFZp667E0716

Gene Description	dual adaptor of phosphotyrosine and 3-phosphoinositides
Omim ID	<a href="#">605768</a>
Gene Ontology	<a href="#">Hyperlink</a>
Other Designations	-

## Pathway

- [B cell receptor signaling pathway](#)