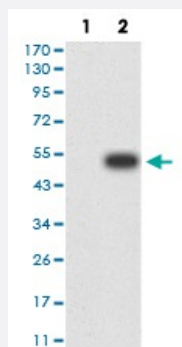


PGRMC1 monoclonal antibody, clone 7G11G8

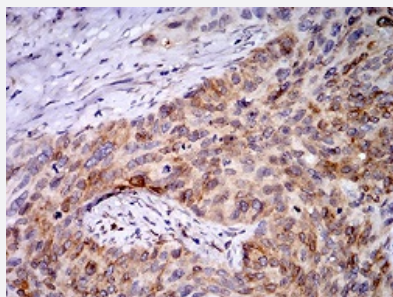
Catalog # MAB17227 Size 100 ug

Applications



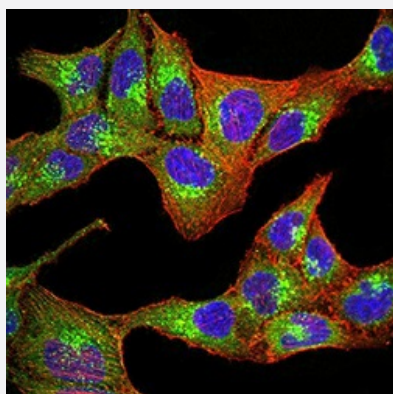
Western Blot (Transfected lysate)

Western Blot analysis of (1) HEK293 cells, (2) PGRMC1-hlgGfC transfected HEK293 cell lysate.



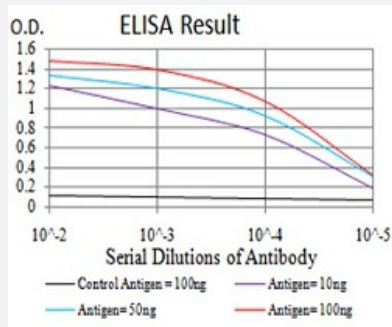
Immunohistochemistry (Formalin/PFA-fixed paraffin-embedded sections)

Immunohistochemical staining of paraffin-embedded cervical cancer tissues with PGRMC1 monoclonal antibody.



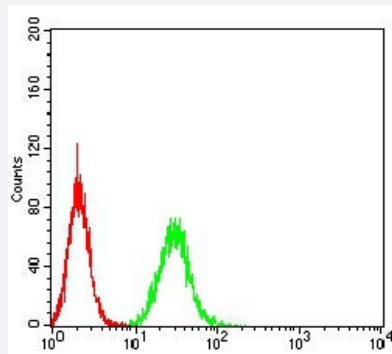
Immunocytochemistry

Immunocytochemical staining of SK-OV-3 cells with PGRMC1 monoclonal antibody (green). DRAQ5 fluorescent DNA dye (blue). Actin filaments have been labeled with Alexa Fluor-555 phalloidin (red).



Enzyme-linked Immunoabsorbent Assay

ELISA analysis of PGRMC1 monoclonal antibody, clone 7G11G8.



Flow Cytometry

Flow cytometric analysis of A549 cells with PGRMC1 monoclonal antibody (green) and negative control (red).

Specification

Product Description	Mouse monoclonal antibody raised against recombinant human PGRMC1.
Immunogen	Recombinant protein corresponding to amino acid 1-195 of human PGRMC1 from <i>E. coli</i> .
Host	Mouse
Theoretical MW (kDa)	21.7kDa
Reactivity	Human
Form	Liquid
Isotype	IgG1
Recommend Usage	ELISA (1:10000) Western Blot (1:500-1:2000) Immunohistochemistry (1:200-1:1000) Immunocytochemistry (1:200-1:1000) Flow Cytometry (1:200-1:400) The optimal working dilution should be determined by the end user.
Storage Buffer	In PBS (0.05% sodium azide).
Storage Instruction	Store at 4°C. For long term storage store at -20°C. Aliquot to avoid repeated freezing and thawing.

Note

This product contains sodium azide: a POISONOUS AND HAZARDOUS SUBSTANCE which should be handled by trained staff only.

Applications

- Western Blot (Transfected lysate)

Western Blot analysis of (1) HEK293 cells, (2) PGRMC1-hlgGFc transfected HEK293 cell lysate.

- Immunohistochemistry (Formalin/PFA-fixed paraffin-embedded sections)

Immunohistochemical staining of paraffin-embedded cervical cancer tissues with PGRMC1 monoclonal antibody.

- Immunocytochemistry

Immunocytochemical staining of SK-OV-3 cells with PGRMC1 monoclonal antibody (green). DRAQ5 fluorescent DNA dye (blue). Actin filaments have been labeled with Alexa Fluor- 555 phalloidin (red).

- Enzyme-linked Immunoabsorbent Assay

ELISA analysis of PGRMC1 monoclonal antibody, clone 7G11G8.

- Flow Cytometry

Flow cytometric analysis of A549 cells with PGRMC1 monoclonal antibody (green) and negative control (red).

Gene Info — PGRMC1

Entrez GeneID [10857](#)

Gene Name PGRMC1

Gene Alias HPR6.6, MPR

Gene Description progesterone receptor membrane component 1

Omim ID [300435](#)

Gene Ontology [Hyperlink](#)

Gene Summary Progesterone binding protein is a putative steroid membrane receptor. The protein is expressed predominantly in the liver and kidney. [provided by RefSeq]

Other Designations OTTHUMP00000023897|progesterone binding protein

Disease

- [Connective Tissue Diseases](#)
- [Fetal Diseases](#)
- [Genetic Predisposition to Disease](#)
- [Infection](#)
- [Inflammation](#)
- [Musculoskeletal Diseases](#)
- [Pregnancy Complications](#)
- [Premature Birth](#)
- [Skin Diseases](#)