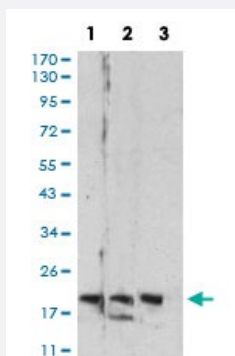


RAB6B monoclonal antibody, clone 6D12E4

Catalog # MAB17224

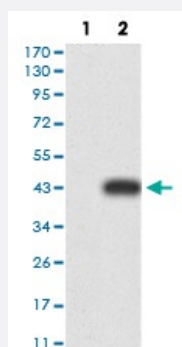
Size 100 ug

Applications



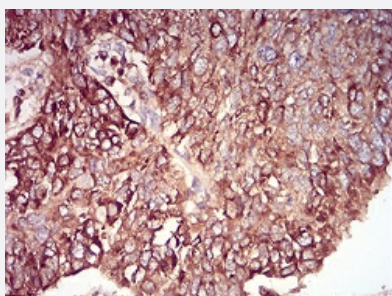
Western Blot (Cell lysate)

Western blot analysis of Lane 1: C6 cell; Lane 2: HT-29 cell; Lane 3: PC-12 cell with RAB6B monoclonal antibody.



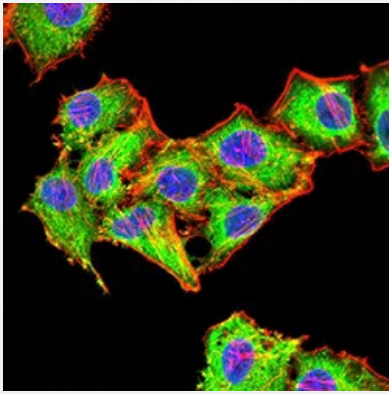
Western Blot (Transfected lysate)

Western Blot analysis of (1) HEK293 cells, (2) RAB6B-hlgGfC transfected HEK293 cell lysate.



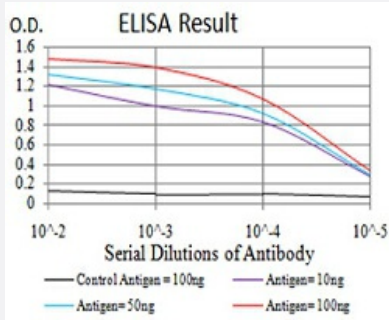
Immunohistochemistry (Formalin/PFA-fixed paraffin-embedded sections)

Immunohistochemical staining of paraffin-embedded lung cancer tissues with RAB6B monoclonal antibody.



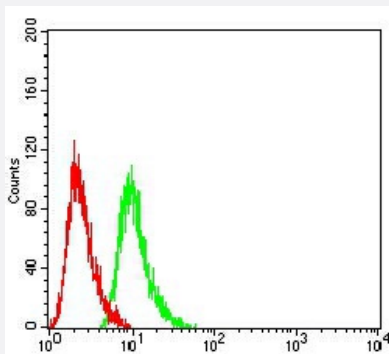
Immunocytochemistry

Immunocytochemical staining of HepG2 cells with RAB6B monoclonal antibody (green). DRAQ5 fluorescent DNA dye (blue). Actin filaments have been labeled with Alexa Fluor-555 phalloidin (red).



Enzyme-linked Immunoabsorbent Assay

ELISA analysis of RAB6B monoclonal antibody, clone 6D12E4.



Flow Cytometry

Flow cytometric analysis of HeLa cells with RAB6B monoclonal antibody (green) and negative control (red).

Specification

Product Description	Mouse monoclonal antibody raised against recombinant human RAB6B.
Immunogen	Recombinant protein corresponding to amino acid 95-208 of human RAB6B from <i>E. coli</i> .
Host	Mouse
Theoretical MW (kDa)	23.5kDa
Reactivity	Human, Rat
Form	Liquid
Isotype	IgG1

Recommend Usage	ELISA (1:10000) Western Blot (1:500-1:2000) Immunohistochemistry (1:200-1:1000) Immunocytochemistry (1:200-1:1000) Flow Cytometry (1:200-1:400) The optimal working dilution should be determined by the end user.
Storage Buffer	In PBS (0.05% sodium azide).
Storage Instruction	Store at 4°C. For long term storage store at -20°C. Aliquot to avoid repeated freezing and thawing.
Note	This product contains sodium azide: a POISONOUS AND HAZARDOUS SUBSTANCE which should be handled by trained staff only.

Applications

- Western Blot (Cell lysate)

Western blot analysis of Lane 1: C6 cell; Lane 2: HT-29 cell; Lane 3: PC-12 cell with RAB6B monoclonal antibody.

- Western Blot (Transfected lysate)

Western Blot analysis of (1) HEK293 cells, (2) RAB6B-hlgGfC transfected HEK293 cell lysate.

- Immunohistochemistry (Formalin/PFA-fixed paraffin-embedded sections)

Immunohistochemical staining of paraffin-embedded lung cancer tissues with RAB6B monoclonal antibody.

- Immunocytochemistry

Immunocytochemical staining of HepG2 cells with RAB6B monoclonal antibody (green). DRAQ5 fluorescent DNA dye (blue). Actin filaments have been labeled with Alexa Fluor- 555 phalloidin (red).

- Enzyme-linked Immunoabsorbent Assay

ELISA analysis of RAB6B monoclonal antibody, clone 6D12E4.

- Flow Cytometry

Flow cytometric analysis of HeLa cells with RAB6B monoclonal antibody (green) and negative control (red).

Gene Info — RAB6B

Entrez GeneID [51560](#)

Gene Name RAB6B

Gene Alias	-
Gene Description	RAB6B, member RAS oncogene family
Gene Ontology	Hyperlink
Gene Summary	O
Other Designations	small GTP-binding protein small GTPase RAB6B

Disease

- [Disease Progression](#)
- [Disease Susceptibility](#)
- [HIV Infections](#)
- [Tobacco Use Disorder](#)