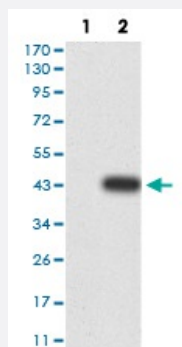


PYCARD monoclonal antibody, clone 1C3D3

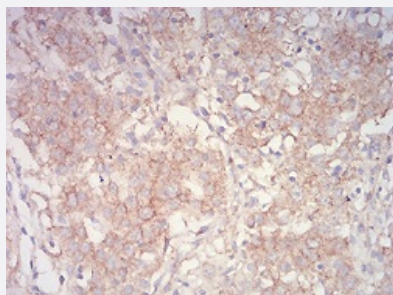
Catalog # MAB17216 Size 100 ug

Applications



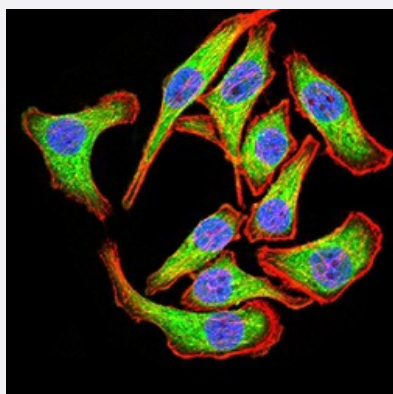
Western Blot (Transfected lysate)

Western Blot analysis of (1) HEK293 cells, (2) PYCARD-hlgGfC transfected HEK293 cell lysate.



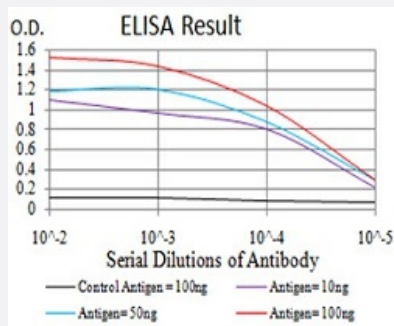
Immunohistochemistry (Formalin/PFA-fixed paraffin-embedded sections)

Immunohistochemical staining of paraffin-embedded stomach cancer tissues with PYCARD monoclonal antibody.



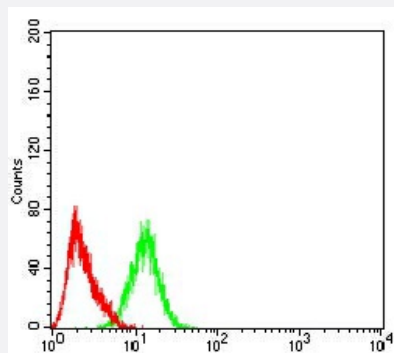
Immunocytochemistry

Immunocytochemical staining of GC-7901 cells with PYCARD monoclonal antibody (green). DRAQ5 fluorescent DNA dye (blue). Actin filaments have been labeled with Alexa Fluor- 555 phalloidin (red).



Enzyme-linked Immunoabsorbent Assay

ELISA analysis of PYCARD monoclonal antibody, clone 1C3D3.



Flow Cytometry

Flow cytometric analysis of HEK293 cells with PYCARD monoclonal antibody (green) and negative control (red).

Specification

Product Description	Mouse monoclonal antibody raised against recombinant human PYCARD.
Immunogen	Recombinant protein corresponding to amino acid 1-120 of human PYCARD from <i>E. coli</i> .
Host	Mouse
Theoretical MW (kDa)	21.6kDa
Reactivity	Human
Form	Liquid
Isotype	IgG1
Recommend Usage	ELISA (1:10000) Western Blot (1:500-1:2000) Immunohistochemistry (1:200-1:1000) Immunocytochemistry (1:200-1:1000) Flow Cytometry (1:200-1:400) The optimal working dilution should be determined by the end user.
Storage Buffer	In PBS (0.05% sodium azide).
Storage Instruction	Store at 4°C. For long term storage store at -20°C. Aliquot to avoid repeated freezing and thawing.

Note

This product contains sodium azide: a POISONOUS AND HAZARDOUS SUBSTANCE which should be handled by trained staff only.

Applications

- Western Blot (Transfected lysate)

Western Blot analysis of (1) HEK293 cells, (2) PYCARD-hlgGfC transfected HEK293 cell lysate.

- Immunohistochemistry (Formalin/PFA-fixed paraffin-embedded sections)

Immunohistochemical staining of paraffin-embedded stomach cancer tissues with PYCARD monoclonal antibody.

- Immunocytochemistry

Immunocytochemical staining of GC-7901 cells with PYCARD monoclonal antibody (green). DRAQ5 fluorescent DNA dye (blue). Actin filaments have been labeled with Alexa Fluor- 555 phalloidin (red).

- Enzyme-linked Immunoabsorbent Assay

ELISA analysis of PYCARD monoclonal antibody, clone 1C3D3.

- Flow Cytometry

Flow cytometric analysis of HEK293 cells with PYCARD monoclonal antibody (green) and negative control (red).

Gene Info — PYCARD

Entrez GeneID [29108](#)

Gene Name PYCARD

Gene Alias ASC, CARD5, MGC10332, TMS, TMS-1, TMS1

Gene Description PYD and CARD domain containing

Omim ID [606838](#)

Gene Ontology [Hyperlink](#)

Gene Summary

This gene encodes an adaptor protein that is composed of two protein-protein interaction domains: a N-terminal PYRIN-PAAD-DAPIN domain (PYD) and a C-terminal caspase-recruitment domain (CARD). The PYD and CARD domains are members of the six-helix bundle death domain-fold superfamily that mediates assembly of large signaling complexes in the inflammatory and apoptotic signaling pathways via the activation of caspase. In normal cells, this protein is localized to the cytoplasm; however, in cells undergoing apoptosis, it forms ball-like aggregates near the nuclear periphery. Two transcript variants encoding different isoforms have been found for this gene. [provided by RefSeq]

Other Designations

apoptosis-associated speck-like protein containing a CARD|caspase recruitment domain protein
5|target of methylation-induced silencing-1

Disease

- [Arthritis](#)
- [Genetic Predisposition to Disease](#)