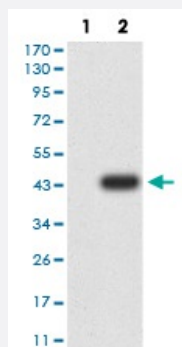


SEC31A monoclonal antibody, clone 5D12C6

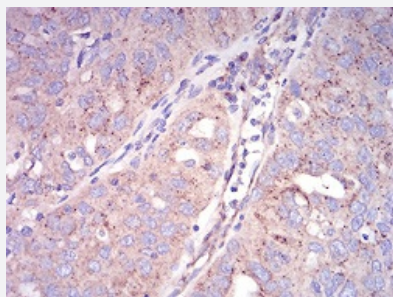
Catalog # MAB17213 Size 100 ug

Applications



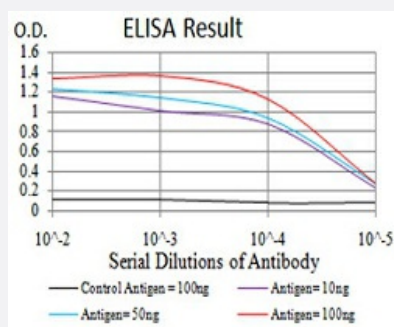
Western Blot (Transfected lysate)

Western Blot analysis of (1) HEK293 cells, (2) SEC31A-hlgGfC transfected HEK293 cell lysate.



Immunohistochemistry (Formalin/PFA-fixed paraffin-embedded sections)

Immunohistochemical staining of paraffin-embedded ovarian cancer tissues with SEC31A monoclonal antibody.



Enzyme-linked Immunoabsorbent Assay

ELISA analysis of SEC31A monoclonal antibody, clone 5D12C6.

Specification

Product Description

Mouse monoclonal antibody raised against recombinant human SEC31A.

Immunogen

Recombinant protein corresponding to amino acid 429-571 of human SEC31A from *E. coli*.

Host	Mouse
Theoretical MW (kDa)	133kDa
Reactivity	Human
Form	Liquid
Isotype	IgG1
Recommend Usage	ELISA (1:10000) Western Blot (1:500-1:2000) Immunohistochemistry (1:200-1:1000) Immunocytochemistry Flow Cytometry The optimal working dilution should be determined by the end user.
Storage Buffer	In PBS (0.05% sodium azide).
Storage Instruction	Store at 4°C. For long term storage store at -20°C. Aliquot to avoid repeated freezing and thawing.
Note	This product contains sodium azide: a POISONOUS AND HAZARDOUS SUBSTANCE which should be handled by trained staff only.

Applications

- Western Blot (Transfected lysate)

Western Blot analysis of (1) HEK293 cells, (2) SEC31A-hlgGFc transfected HEK293 cell lysate.

- Immunohistochemistry (Formalin/PFA-fixed paraffin-embedded sections)

Immunohistochemical staining of paraffin-embedded ovarian cancer tissues with SEC31A monoclonal antibody.

- Enzyme-linked Immunoabsorbent Assay

ELISA analysis of SEC31A monoclonal antibody, clone 5D12C6.

Gene Info — SEC31A

Entrez GeneID	22872
Gene Name	SEC31A
Gene Alias	ABP125, ABP130, DKFZp686N07171, HSPC275, HSPC334, KIAA0905, MGC90305, SEC31L1

Gene Description	SEC31 homolog A (S. cerevisiae)
Omim ID	610257
Gene Ontology	Hyperlink
Gene Summary	<p>The protein encoded by this gene is similar to yeast Sec31 protein. Yeast Sec31 protein is known to be a component of the COPII protein complex which is responsible for vesicle budding from endoplasmic reticulum (ER). This protein was found to colocalize with SEC13, one of the other components of COPII, in the subcellular structures corresponding to the vesicle transport function. An immunodepletion experiment confirmed that this protein is required for ER-Golgi transport. Alternative splicing results in multiple transcript variants encoding different isoforms. [provided by RefSeq]</p>
Other Designations	OTTHUMP00000160810 SEC31 homolog A SEC31-like 1 protein-transport protein SEC31 yeast Sec31p homolog

Disease

- [Tobacco Use Disorder](#)