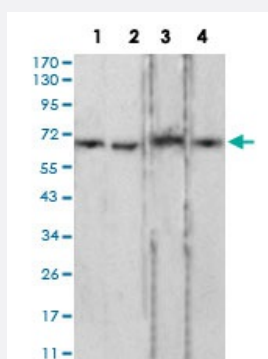


LMNB2 monoclonal antibody, clone 2E2F4

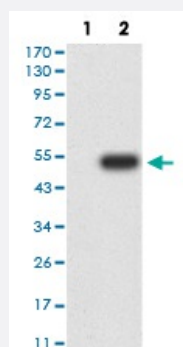
Catalog # MAB17212 Size 100 ug

Applications



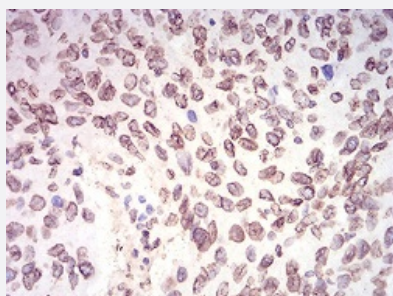
Western Blot (Cell lysate)

Western blot analysis of Lane 1: PC-3 cell; Lane 2: LNCap cell; Lane 3: Jurkat cell; Lane 4: HCT116 cell with LMNB2 monoclonal antibody.



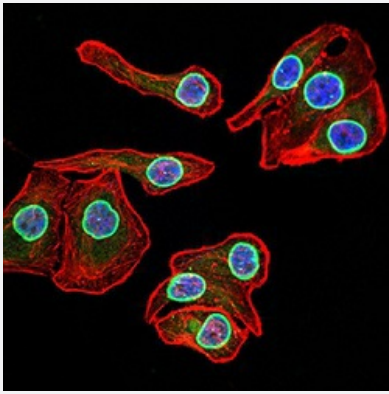
Western Blot (Transfected lysate)

Western Blot analysis of (1) HEK293 cells, (2) LMNB2-hlgGfc transfected HEK293 cell lysate.



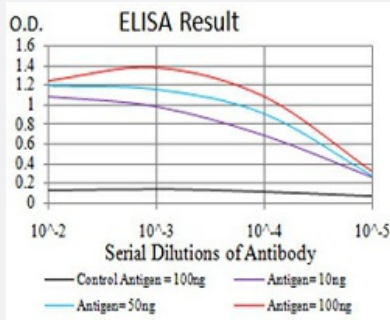
Immunohistochemistry (Formalin/PFA-fixed paraffin-embedded sections)

Immunohistochemical staining of paraffin-embedded ovarian cancer tissues with LMNB2 monoclonal antibody.



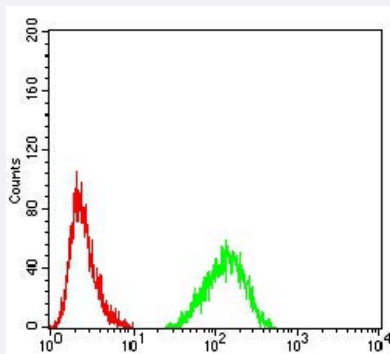
Immunocytochemistry

Immunocytochemical staining of GC-7901 cells with LMNB2 monoclonal antibody (green). DRAQ5 fluorescent DNA dye (blue). Actin filaments have been labeled with Alexa Fluor-555 phalloidin (red).



Enzyme-linked Immunoabsorbent Assay

ELISA analysis of LMNB2 monoclonal antibody, clone 2E2F4.



Flow Cytometry

Flow cytometric analysis of HeLa cells with LMNB2 monoclonal antibody (green) and negative control (red).

Specification

Product Description	Mouse monoclonal antibody raised against recombinant human LMNB2.
Immunogen	Recombinant protein corresponding to amino acid 401-600 of human LMNB2 from <i>E. coli</i> .
Host	Mouse
Theoretical MW (kDa)	67.7kDa
Reactivity	Human
Form	Liquid
Isotype	IgG2b

Recommend Usage	ELISA (1:10000) Western Blot (1:500-1:2000) Immunohistochemistry (1:200-1:1000) Immunocytochemistry (1:200-1:1000) Flow Cytometry (1:200-1:400) The optimal working dilution should be determined by the end user.
Storage Buffer	In PBS (0.05% sodium azide).
Storage Instruction	Store at 4°C. For long term storage store at -20°C. Aliquot to avoid repeated freezing and thawing.
Note	This product contains sodium azide: a POISONOUS AND HAZARDOUS SUBSTANCE which should be handled by trained staff only.

Applications

- Western Blot (Cell lysate)

Western blot analysis of Lane 1: PC-3 cell; Lane 2: LNCap cell; Lane 3: Jurkat cell; Lane 4: HCT116 cell with LMNB2 monoclonal antibody.

- Western Blot (Transfected lysate)

Western Blot analysis of (1) HEK293 cells, (2) LMNB2-hlgGFc transfected HEK293 cell lysate.

- Immunohistochemistry (Formalin/PFA-fixed paraffin-embedded sections)

Immunohistochemical staining of paraffin-embedded ovarian cancer tissues with LMNB2 monoclonal antibody.

- Immunocytochemistry

Immunocytochemical staining of GC-7901 cells with LMNB2 monoclonal antibody (green). DRAQ5 fluorescent DNA dye (blue). Actin filaments have been labeled with Alexa Fluor- 555 phalloidin (red).

- Enzyme-linked Immunoabsorbent Assay

ELISA analysis of LMNB2 monoclonal antibody, clone 2E2F4.

- Flow Cytometry

Flow cytometric analysis of HeLa cells with LMNB2 monoclonal antibody (green) and negative control (red).

Gene Info — LMNB2

Entrez GeneID

[84823](#)

Gene Name

LMNB2

Gene Alias	LAMB2, LMN2, MGC2721
Gene Description	lamin B2
Omim ID	150341 608709
Gene Ontology	Hyperlink
Gene Summary	<p>The nuclear lamina consists of a two-dimensional matrix of proteins located next to the inner nuclear membrane. The lamin family of proteins make up the matrix and are highly conserved in evolution. During mitosis, the lamina matrix is reversibly disassembled as the lamin proteins are phosphorylated. Lamin proteins are thought to be involved in nuclear stability, chromatin structure and gene expression. Vertebrate lamins consist of two types, A and B. This gene encodes one of the two B type proteins, B2. This gene is in a head-to-tail orientation with the gene for the translocase of inner mitochondrial membrane 13 homolog gene. [provided by RefSeq]</p>
Other Designations	-

Disease

- [Cardiovascular Diseases](#)
- [Diabetes Mellitus](#)
- [Edema](#)