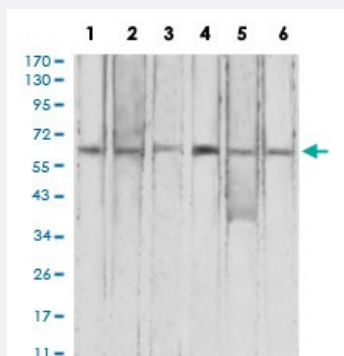


CFHR5 monoclonal antibody, clone 3A10A5

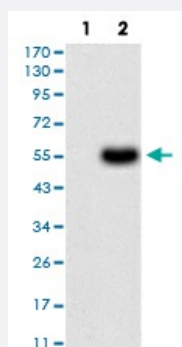
Catalog # MAB17205 Size 100 ug

Applications



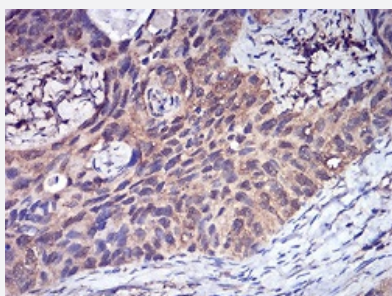
Western Blot (Cell lysate)

Western blot analysis of Lane 1: HepG2 cell; Lane 2: K562 cell; Lane 3: L-02 cell; Lane 4: SK-Hep-1 cell; Lane 5: SMMC-7721 cell; Lane 6: NIH/3T3 cell with CFHR5 monoclonal antibody.



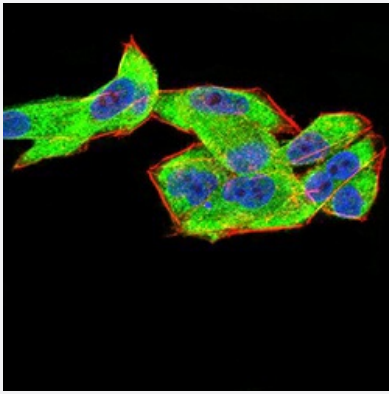
Western Blot (Transfected lysate)

Western Blot analysis of (1) HEK293 cells, (2) CFHR5-hlgGfC transfected HEK293 cell lysate.



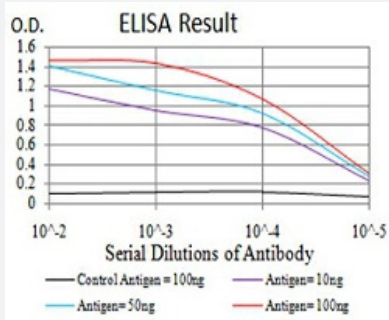
Immunohistochemistry (Formalin/PFA-fixed paraffin-embedded sections)

Immunohistochemical staining of paraffin-embedded cervical cancer tissues with CFHR5 monoclonal antibody.



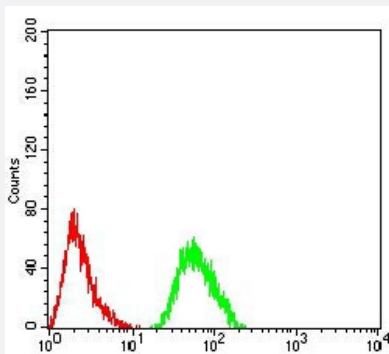
Immunocytochemistry

Immunocytochemical staining of HeLa cells with CFHR5 monoclonal antibody (green). DRAQ5 fluorescent DNA dye (blue). Actin filaments have been labeled with Alexa Fluor-555 phalloidin (red).



Enzyme-linked Immunoabsorbent Assay

ELISA analysis of CFHR5 monoclonal antibody, clone 3A10A5.



Flow Cytometry

Flow cytometric analysis of HeLa cells with CFHR5 monoclonal antibody (green) and negative control (red).

Specification

Product Description	Mouse monoclonal antibody raised against recombinant human CFHR5.
Immunogen	Recombinant protein corresponding to amino acid 344-569 of human CFHR5 from <i>E. coli</i> .
Host	Mouse
Theoretical MW (kDa)	64.4kDa
Reactivity	Human, Mouse
Form	Liquid
Isotype	IgG2a

Recommend Usage	ELISA (1:10000) Western Blot (1:500-1:2000) Immunohistochemistry (1:200-1:1000) Immunocytochemistry (1:200-1:1000) Flow Cytometry (1:200-1:400) The optimal working dilution should be determined by the end user.
Storage Buffer	In PBS (0.05% sodium azide).
Storage Instruction	Store at 4°C. For long term storage store at -20°C. Aliquot to avoid repeated freezing and thawing.
Note	This product contains sodium azide: a POISONOUS AND HAZARDOUS SUBSTANCE which should be handled by trained staff only.

Applications

- Western Blot (Cell lysate)

Western blot analysis of Lane 1: HepG2 cell; Lane 2: K562 cell; Lane 3: L-02 cell; Lane 4: SK-Hep-1 cell; Lane 5: SMMC-7721 cell; Lane 6: NIH/3T3 cell with CFHR5 monoclonal antibody.

- Western Blot (Transfected lysate)

Western Blot analysis of (1) HEK293 cells, (2) CFHR5-hlgGfc transfected HEK293 cell lysate.

- Immunohistochemistry (Formalin/PFA-fixed paraffin-embedded sections)

Immunohistochemical staining of paraffin-embedded cervical cancer tissues with CFHR5 monoclonal antibody.

- Immunocytochemistry

Immunocytochemical staining of HeLa cells with CFHR5 monoclonal antibody (green). DRAQ5 fluorescent DNA dye (blue). Actin filaments have been labeled with Alexa Fluor- 555 phalloidin (red).

- Enzyme-linked Immunoabsorbent Assay

ELISA analysis of CFHR5 monoclonal antibody, clone 3A10A5.

- Flow Cytometry

Flow cytometric analysis of HeLa cells with CFHR5 monoclonal antibody (green) and negative control (red).

Gene Info — CFHR5

Entrez GeneID [81494](#)

Gene Name CFHR5

Gene Alias	CFHL5, FHR-5, FHR5, FLJ10549, MGC133240
Gene Description	complement factor H-related 5
Omim ID	608593
Gene Ontology	Hyperlink
Other Designations	factor H-related protein 5

Disease

- [Genetic Predisposition to Disease](#)
- [Glomerulonephritis](#)
- [Hemolytic-Uremic Syndrome](#)
- [Lymphoma](#)
- [Macular Degeneration](#)