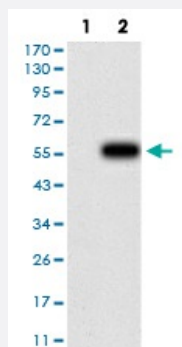


CFHR5 monoclonal antibody, clone 3E1E10

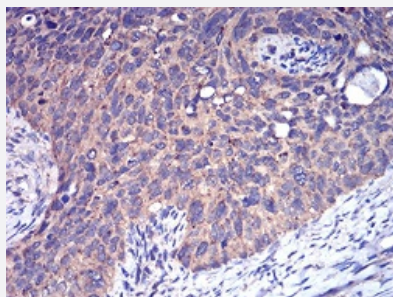
Catalog # MAB17191 Size 100 ug

Applications



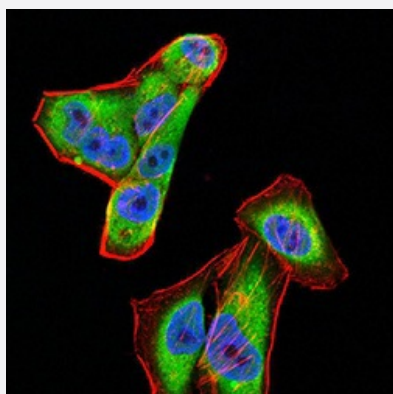
Western Blot (Transfected lysate)

Western Blot analysis of (1) HEK293 cells, (2) CFHR5-hlgGfC transfected HEK293 cell lysate.



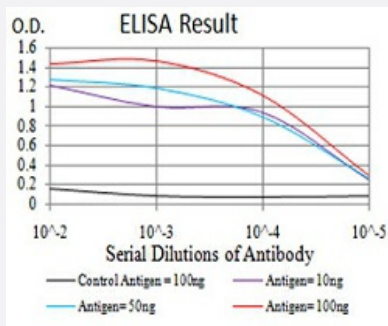
Immunohistochemistry (Formalin/PFA-fixed paraffin-embedded sections)

Immunohistochemical staining of paraffin-embedded cervical cancer tissues with CFHR5 monoclonal antibody.



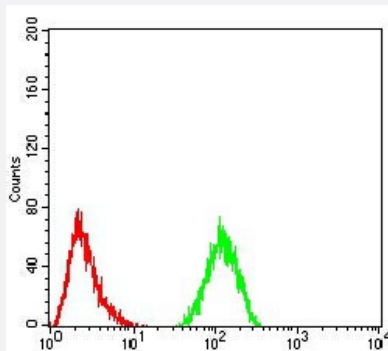
Immunocytochemistry

Immunocytochemical staining of HeLa cells with CFHR5 monoclonal antibody (green). DRAQ5 fluorescent DNA dye (blue). Actin filaments have been labeled with Alexa Fluor-555 phalloidin (red).



Enzyme-linked Immunoabsorbent Assay

ELISA analysis of CFHR5 monoclonal antibody, clone 3E1E10.



Flow Cytometry

Flow cytometric analysis of HeLa cells with CFHR5 monoclonal antibody (green) and negative control (red).

Specification

Product Description	Mouse monoclonal antibody raised against recombinant human CFHR5.
Immunogen	Recombinant protein corresponding to amino acid 344-569 of human CFHR5 from <i>E. coli</i> .
Host	Mouse
Theoretical MW (kDa)	64.4kDa
Reactivity	Human
Form	Liquid
Isotype	IgG1
Recommend Usage	ELISA (1:10000) Western Blot (1:500-1:2000) Immunohistochemistry (1:200-1:1000) Immunocytochemistry (1:200-1:1000) Flow Cytometry (1:200-1:400) The optimal working dilution should be determined by the end user.
Storage Buffer	In PBS (0.05% sodium azide).
Storage Instruction	Store at 4°C. For long term storage store at -20°C. Aliquot to avoid repeated freezing and thawing.

Note

This product contains sodium azide: a POISONOUS AND HAZARDOUS SUBSTANCE which should be handled by trained staff only.

Applications

- Western Blot (Transfected lysate)

Western Blot analysis of (1) HEK293 cells, (2) CFHR5-hlgGfc transfected HEK293 cell lysate.

- Immunohistochemistry (Formalin/PFA-fixed paraffin-embedded sections)

Immunohistochemical staining of paraffin-embedded cervical cancer tissues with CFHR5 monoclonal antibody.

- Immunocytochemistry

Immunocytochemical staining of HeLa cells with CFHR5 monoclonal antibody (green). DRAQ5 fluorescent DNA dye (blue). Actin filaments have been labeled with Alexa Fluor- 555 phalloidin (red).

- Enzyme-linked Immunoabsorbent Assay

ELISA analysis of CFHR5 monoclonal antibody, clone 3E1E10.

- Flow Cytometry

Flow cytometric analysis of HeLa cells with CFHR5 monoclonal antibody (green) and negative control (red).

Gene Info — CFHR5

Entrez GeneID [81494](#)

Gene Name CFHR5

Gene Alias CFHL5, FHR-5, FHR5, FLJ10549, MGC133240

Gene Description complement factor H-related 5

Omim ID [608593](#)

Gene Ontology [Hyperlink](#)

Other Designations factor H-related protein 5

Disease

- [Genetic Predisposition to Disease](#)

- [Glomerulonephritis](#)
- [Hemolytic-Uremic Syndrome](#)
- [Lymphoma](#)
- [Macular Degeneration](#)