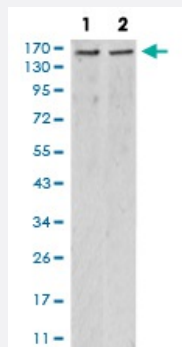


# KDM6A monoclonal antibody, clone 6E2D6

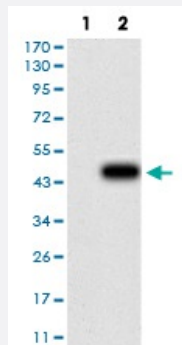
Catalog # MAB17186      Size 100 ug

## Applications



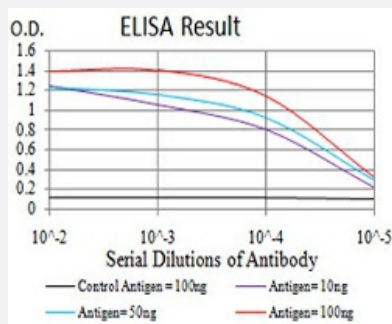
### Western Blot (Cell lysate)

Western blot analysis of Lane 1: HepG2 cell; Lane 2: C6 cell with KDM6A monoclonal antibody.



### Western Blot (Transfected lysate)

Western Blot analysis of (1) HEK293 cells, (2) KDM6A-hlgFc transfected HEK293 cell lysate.



### Enzyme-linked Immunoabsorbent Assay

ELISA analysis of KDM6A monoclonal antibody, clone 6E2D6.

## Specification

### Product Description

Mouse monoclonal antibody raised against recombinant human KDM6A.

Immunogen	Recombinant protein corresponding to amino acid 1252-1401 of human KDM6A from <i>E. coli</i> .
Host	Mouse
Theoretical MW (kDa)	154kDa
Reactivity	Human, Rat
Form	Liquid
Isotype	IgG2a
Recommend Usage	ELISA (1:10000) Western Blot (1:500-1:2000) Immunohistochemistry Immunocytochemistry Flow Cytometry The optimal working dilution should be determined by the end user.
Storage Buffer	In PBS (0.05% sodium azide).
Storage Instruction	Store at 4°C. For long term storage store at -20°C. Aliquot to avoid repeated freezing and thawing.
Note	This product contains sodium azide: a POISONOUS AND HAZARDOUS SUBSTANCE which should be handled by trained staff only.

## Applications

- Western Blot (Cell lysate)

Western blot analysis of Lane 1: HepG2 cell; Lane 2: C6 cell with KDM6A monoclonal antibody.

- Western Blot (Transfected lysate)

Western Blot analysis of (1) HEK293 cells, (2) KDM6A-hlgGfc transfected HEK293 cell lysate.

- Enzyme-linked Immunoabsorbent Assay

ELISA analysis of KDM6A monoclonal antibody, clone 6E2D6.

## Gene Info — KDM6A

Entrez GeneID	<a href="#">7403</a>
Gene Name	KDM6A
Gene Alias	UTX, KABUK2, bA386N14.2

Gene Description	lysine (K)-specific demethylase 6A
Omim ID	<a href="#">300128</a>
Gene Ontology	<a href="#">Hyperlink</a>
Gene Summary	OTTHUMP00000023175 OTTHUMP00000061534 bA386N14.2 (ubiquitously transcribed X chromosome tetratricopeptide repeat protein (UTX)) ubiquitously transcribed tetratricopeptide repeat gene
Other Designations	OTTHUMP00000023175 OTTHUMP00000061534 bA386N14.2 (ubiquitously transcribed X chromosome tetratricopeptide repeat protein (UTX)) ubiquitously transcribed tetratricopeptide repeat gene, X chromosome ubiquitously-transcribed TPR gene on the X chromosome

## Disease

- [Graves Disease](#)