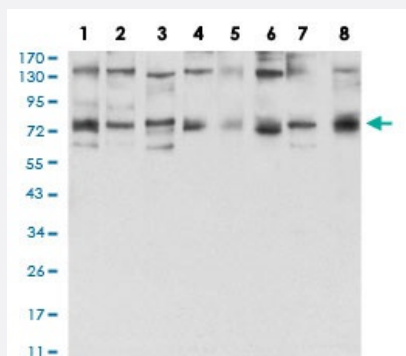


GFPT1 monoclonal antibody, clone 1F1B9

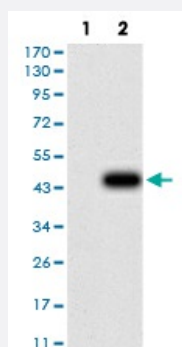
Catalog # MAB17184 Size 100 ug

Applications



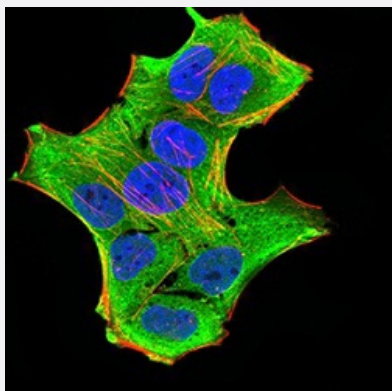
Western Blot (Cell lysate)

Western blot analysis of Lane 1: HeLa cell; Lane 2: HepG2 cell; Lane 3: HEK293 cell; Lane 4: BEL-7402 cell; Lane 5: SMMC-7721 cell; Lane 6: SK-MES-1 cell; Lane 7: C6 cell; Lane 8: COS-7 cell with GFPT1 monoclonal antibody.



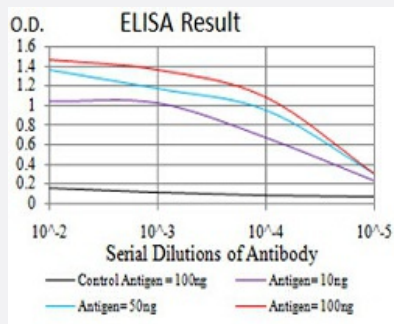
Western Blot (Transfected lysate)

Western Blot analysis of (1) HEK293 cells, (2) GFPT1-hlgGfC transfected HEK293 cell lysate.



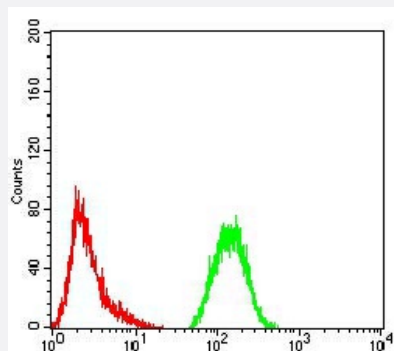
Immunocytochemistry

Immunocytochemical staining of HeLa cells with GFPT1 monoclonal antibody (green). DRAQ5 fluorescent DNA dye (blue). Actin filaments have been labeled with Alexa Fluor-555 phalloidin (red).



Enzyme-linked Immunoabsorbent Assay

ELISA analysis of GFPT1 monoclonal antibody, clone 1F1B9.



Flow Cytometry

Flow cytometric analysis of HeLa cells with GFPT1 monoclonal antibody (green) and negative control (red).

Specification

Product Description

Mouse monoclonal antibody raised against recombinant human GFPT1.

Immunogen

Recombinant protein corresponding to amino acid 536-681 of human GFPT1 from *E. coli*.

Host

Mouse

Theoretical MW (kDa)

78.8kDa

Reactivity

Human, Monkey, Rat

Form

Liquid

Isotype

IgG1

Recommend Usage

ELISA (1:10000)
Western Blot (1:500-1:2000)
Immunohistochemistry
Immunocytochemistry (1:200-1:1000)
Flow Cytometry (1:200-1:400)
The optimal working dilution should be determined by the end user.

Storage Buffer

In PBS (0.05% sodium azide).

Storage Instruction

Store at 4°C. For long term storage store at -20°C.
Aliquot to avoid repeated freezing and thawing.

Note

This product contains sodium azide: a POISONOUS AND HAZARDOUS SUBSTANCE which should be handled by trained staff only.

Applications

- Western Blot (Cell lysate)

Western blot analysis of Lane 1: HeLa cell; Lane 2: HepG2 cell; Lane 3: HEK293 cell; Lane 4: BEL-7402 cell; Lane 5: SMMC-7721 cell; Lane 6: SK-MES-1 cell; Lane 7: C6 cell; Lane 8: COS-7 cell with GFPT1 monoclonal antibody.

- Western Blot (Transfected lysate)

Western Blot analysis of (1) HEK293 cells, (2) GFPT1-hlgGFc transfected HEK293 cell lysate.

- Immunocytochemistry

Immunocytochemical staining of HeLa cells with GFPT1 monoclonal antibody (green). DRAQ5 fluorescent DNA dye (blue). Actin filaments have been labeled with Alexa Fluor- 555 phalloidin (red).

- Enzyme-linked Immunoabsorbent Assay

ELISA analysis of GFPT1 monoclonal antibody, clone 1F1B9.

- Flow Cytometry

Flow cytometric analysis of HeLa cells with GFPT1 monoclonal antibody (green) and negative control (red).

Gene Info — GFPT1

Entrez GeneID	2673
---------------	----------------------

Gene Name	GFPT1
-----------	-------

Gene Alias	GFA, GFAT, GFAT1, GFAT1m, GFPT
------------	--------------------------------

Gene Description	glutamine-fructose-6-phosphate transaminase 1
------------------	---

Omim ID	138292
---------	------------------------

Gene Ontology	Hyperlink
---------------	---------------------------

Gene Summary	This gene encodes the first and rate-limiting enzyme of the hexosamine pathway and controls the flux of glucose into the hexosamine pathway. The product of this gene catalyzes the formation of glucosamine 6-phosphate. [provided by RefSeq]
--------------	--

Other Designations	glucosamine-fructose-6-phosphate aminotransferase[glutamine: fructose-6-phosphate amidotransferase-1
--------------------	--

Pathway

- [Alanine](#)
- [Amino sugar and nucleotide sugar metabolism](#)
- [Metabolic pathways](#)

Disease

- [Diabetes Mellitus](#)
- [Diabetic Nephropathies](#)
- [Genetic Predisposition to Disease](#)
- [Insulin Resistance](#)
- [Obesity](#)