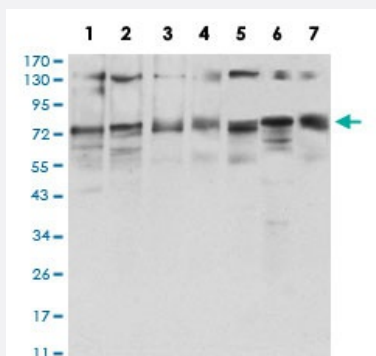


GFPT1 monoclonal antibody, clone 1F1A4

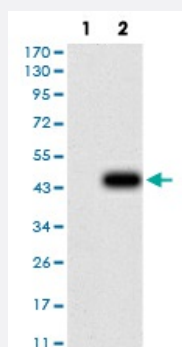
Catalog # MAB17183 Size 100 ug

Applications



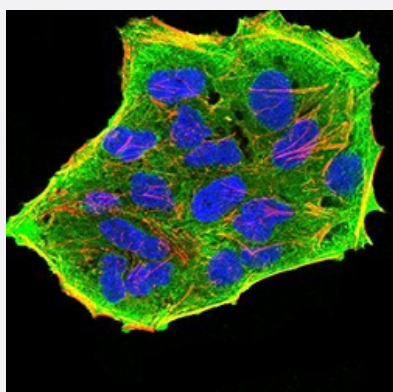
Western Blot (Cell lysate)

Western blot analysis of Lane 1: HepG2 cell; Lane 2: HEK293 cell; Lane 3: BEL-7402 cell; Lane 4: SMMC-7721 cell; Lane 5: SK-MES-1 cell; Lane 6: C6 cell; Lane 7: COS-7 cell with GFPT1 monoclonal antibody.



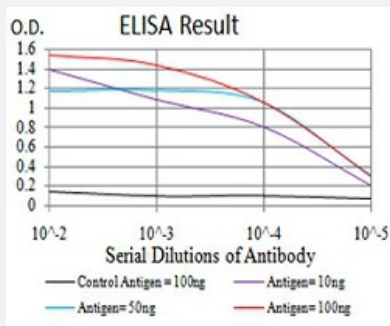
Western Blot (Transfected lysate)

Western Blot analysis of (1) HEK293 cells, (2) GFPT1-hlgGfc transfected HEK293 cell lysate.



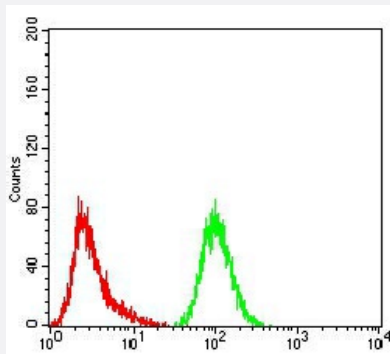
Immunocytochemistry

Immunocytochemical staining of HeLa cells with GFPT1 monoclonal antibody (green). DRAQ5 fluorescent DNA dye (blue). Actin filaments have been labeled with Alexa Fluor-555 phalloidin (red).



Enzyme-linked Immunoabsorbent Assay

ELISA analysis of GFPT1 monoclonal antibody, clone 1F1A4.



Flow Cytometry

Flow cytometric analysis of HeLa cells with GFPT1 monoclonal antibody (green) and negative control (red).

Specification

Product Description	Mouse monoclonal antibody raised against recombinant human GFPT1.
Immunogen	Recombinant protein corresponding to amino acid 536-681 of human GFPT1 from <i>E. coli</i> .
Host	Mouse
Theoretical MW (kDa)	78.8kDa
Reactivity	Human, Monkey, Rat
Form	Liquid
Isotype	IgG1
Recommend Usage	ELISA (1:10000) Western Blot (1:500-1:2000) Immunohistochemistry Immunocytochemistry (1:200-1:1000) Flow Cytometry (1:200-1:400) The optimal working dilution should be determined by the end user.
Storage Buffer	In PBS (0.05% sodium azide).
Storage Instruction	Store at 4°C. For long term storage store at -20°C. Aliquot to avoid repeated freezing and thawing.

Note

This product contains sodium azide: a POISONOUS AND HAZARDOUS SUBSTANCE which should be handled by trained staff only.

Applications

- Western Blot (Cell lysate)

Western blot analysis of Lane 1: HepG2 cell; Lane 2: HEK293 cell; Lane 3: BEL-7402 cell; Lane 4: SMMC-7721 cell; Lane 5: SK-MES-1 cell; Lane 6: C6 cell; Lane 7: COS-7 cell with GFPT1 monoclonal antibody.

- Western Blot (Transfected lysate)

Western Blot analysis of (1) HEK293 cells, (2) GFPT1-hlgGFc transfected HEK293 cell lysate.

- Immunocytochemistry

Immunocytochemical staining of HeLa cells with GFPT1 monoclonal antibody (green). DRAQ5 fluorescent DNA dye (blue). Actin filaments have been labeled with Alexa Fluor- 555 phalloidin (red).

- Enzyme-linked Immunoabsorbent Assay

ELISA analysis of GFPT1 monoclonal antibody, clone 1F1A4.

- Flow Cytometry

Flow cytometric analysis of HeLa cells with GFPT1 monoclonal antibody (green) and negative control (red).

Gene Info — GFPT1

Entrez GeneID	2673
---------------	----------------------

Gene Name	GFPT1
-----------	-------

Gene Alias	GFA, GFAT, GFAT1, GFAT1m, GFPT
------------	--------------------------------

Gene Description	glutamine-fructose-6-phosphate transaminase 1
------------------	---

Omim ID	138292
---------	------------------------

Gene Ontology	Hyperlink
---------------	---------------------------

Gene Summary	This gene encodes the first and rate-limiting enzyme of the hexosamine pathway and controls the flux of glucose into the hexosamine pathway. The product of this gene catalyzes the formation of glucosamine 6-phosphate. [provided by RefSeq]
--------------	--

Other Designations	glucosamine-fructose-6-phosphate aminotransferase[glutamine: fructose-6-phosphate amidotransferase-1
--------------------	--

Pathway

- [Alanine](#)
- [Amino sugar and nucleotide sugar metabolism](#)
- [Metabolic pathways](#)

Disease

- [Diabetes Mellitus](#)
- [Diabetic Nephropathies](#)
- [Genetic Predisposition to Disease](#)
- [Insulin Resistance](#)
- [Obesity](#)