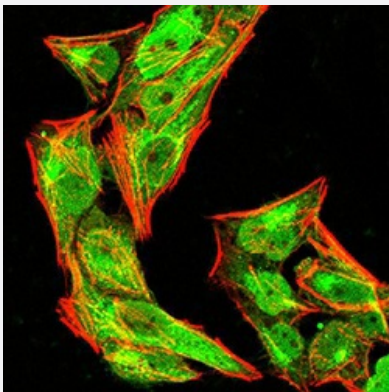


Nlrc4 (phospho S533) monoclonal antibody, clone 9A6A1

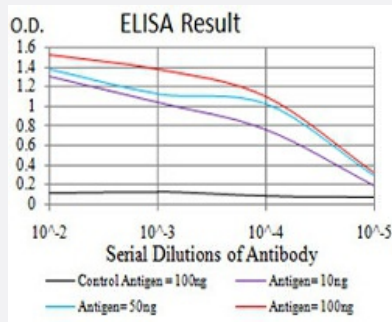
Catalog # MAB17178 Size 100 ug

Applications



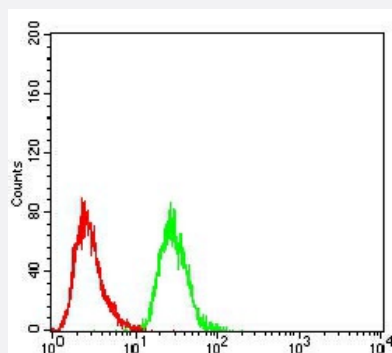
Immunocytochemistry

Immunocytochemical staining of HeLa cells with Nlrc4 (phospho S533) monoclonal antibody (green). DRAQ5 fluorescent DNA dye (blue). Actin filaments have been labeled with Alexa Fluor-555 phalloidin (red).



Enzyme-linked Immunoabsorbent Assay

ELISA analysis of Nlrc4 (phospho S533) monoclonal antibody, clone 9A6A1



Flow Cytometry

Flow cytometric analysis of HeLa cells with Nlrc4 (phospho S533) monoclonal antibody (green) and negative control (red).

Specification

Product Description

Rat monoclonal antibody raised against synthetic peptide of mouse Nlrc4 (phospho S533).

Immunogen	A synthetic peptide corresponding to amino acid 525-538 of human Nlrc4 (phospho S533).
Host	Rat
Theoretical MW (kDa)	116.7kDa
Reactivity	Human
Form	Liquid
Isotype	IgG1
Recommend Usage	ELISA (1:10000) Western Blot Immunohistochemistry Immunocytochemistry (1:200-1:1000) Flow Cytometry (1:200-1:400) The optimal working dilution should be determined by the end user.
Storage Buffer	In PBS (0.05% sodium azide).
Storage Instruction	Store at 4°C. For long term storage store at -20°C. Aliquot to avoid repeated freezing and thawing.
Note	This product contains sodium azide: a POISONOUS AND HAZARDOUS SUBSTANCE which should be handled by trained staff only.

Applications

- Immunocytochemistry

Immunocytochemical staining of HeLa cells with Nlrc4 (phospho S533) monoclonal antibody (green). DRAQ5 fluorescent DNA dye (blue). Actin filaments have been labeled with Alexa Fluor- 555 phalloidin (red).

- Enzyme-linked Immunoabsorbent Assay

ELISA analysis of Nlrc4 (phospho S533) monoclonal antibody, clone 9A6A1

- Flow Cytometry

Flow cytometric analysis of HeLa cells with Nlrc4 (phospho S533) monoclonal antibody (green) and negative control (red).

Gene Info — Nlrc4

Entrez GeneID [268973](#)

Gene Name Nlrc4

Gene Alias	9530011P19Rik, CLAN, CLAN1, CLANA, CLANB, CLANC, CLAND, Card12, IPAF
Gene Description	NLR family, CARD domain containing 4
Gene Ontology	Hyperlink
Gene Summary	O
Other Designations	caspase recruitment domain family, member 12