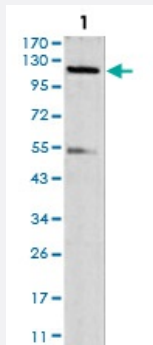


# Nlrc4 (phospho S533) monoclonal antibody, clone 4B7B7

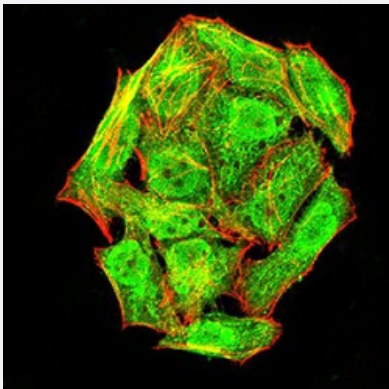
Catalog # MAB17177 Size 100 ug

## Applications



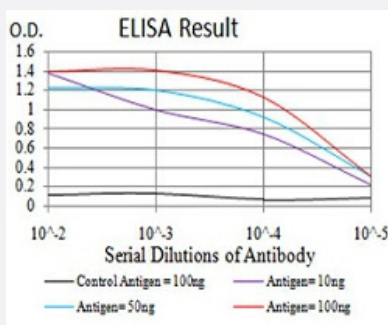
### Western Blot (Cell lysate)

Western blot analysis using Nlrc4 (phospho S533) monoclonal antibody against NIH/3T3 cell.



### Immunocytochemistry

Immunocytochemical staining of HeLa cells with Nlrc4 (phospho S533) monoclonal antibody (green). DRAQ5 fluorescent DNA dye (blue). Actin filaments have been labeled with Alexa Fluor-555 phalloidin (red).



### Enzyme-linked Immunoabsorbent Assay

ELISA analysis of Nlrc4 (phospho S533) monoclonal antibody, clone 4B7B7.

## Specification

### Product Description

Rat monoclonal antibody raised against synthetic peptide of mouse Nlrc4 (phospho S533).

Immunogen	A synthetic peptide corresponding to amino acid 525-538 of human Nlrc4 (phospho S533).
Host	Rat
Theoretical MW (kDa)	116.7kDa
Reactivity	Human, Mouse
Form	Liquid
Isotype	IgG1
Recommend Usage	ELISA (1:10000) Western Blot (1:500-1:2000) Immunohistochemistry Immunocytochemistry (1:200-1:1000) Flow Cytometry The optimal working dilution should be determined by the end user.
Storage Buffer	In PBS (0.05% sodium azide).
Storage Instruction	Store at 4°C. For long term storage store at -20°C. Aliquot to avoid repeated freezing and thawing.
Note	This product contains sodium azide: a POISONOUS AND HAZARDOUS SUBSTANCE which should be handled by trained staff only.

## Applications

- Western Blot (Cell lysate)

Western blot analysis using Nlrc4 (phospho S533) monoclonal antibody against NIH/3T3 cell.

- Immunocytochemistry

Immunocytochemical staining of HeLa cells with Nlrc4 (phospho S533) monoclonal antibody (green). DRAQ5 fluorescent DNA dye (blue). Actin filaments have been labeled with Alexa Fluor- 555 phalloidin (red).

- Enzyme-linked Immunoabsorbent Assay

ELISA analysis of Nlrc4 (phospho S533) monoclonal antibody, clone 4B7B7.

## Gene Info — Nlrc4

Entrez GeneID [268973](#)

Gene Name Nlrc4

<b>Gene Alias</b>	9530011P19Rik, CLAN, CLAN1, CLANA, CLANB, CLANC, CLAND, Card12, IPAF
<b>Gene Description</b>	NLR family, CARD domain containing 4
<b>Gene Ontology</b>	<a href="#">Hyperlink</a>
<b>Gene Summary</b>	O
<b>Other Designations</b>	caspase recruitment domain family, member 12