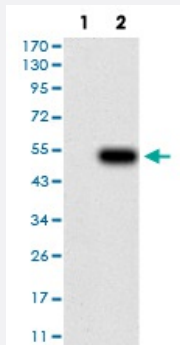


IL28A monoclonal antibody, clone 6H9E6

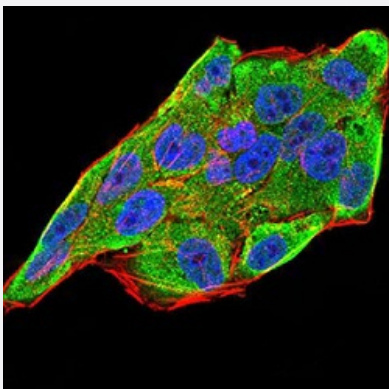
Catalog # MAB17176 Size 100 ug

Applications



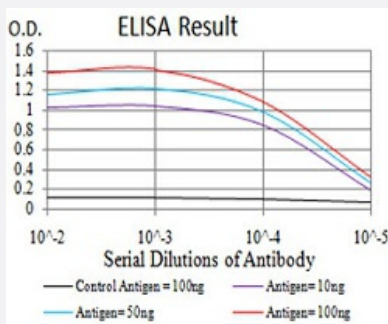
Western Blot (Transfected lysate)

Western Blot analysis of (1) HEK293 cells, (2) IL28A-hlgGfc transfected HEK293 cell lysate.



Immunocytochemistry

Immunocytochemical staining of HeLa cells with IL28A monoclonal antibody (green). DRAQ5 fluorescent DNA dye (blue). Actin filaments have been labeled with Alexa Fluor-555 phalloidin (red).



Enzyme-linked Immunoabsorbent Assay

ELISA analysis of IL28A monoclonal antibody, clone 6H9E6.

Specification

Product Description

Mouse monoclonal antibody raised against recombinant human IL28A.

Immunogen	Recombinant protein corresponding to amino acid 1-200 of human IL28A from <i>E. coli</i> .
Host	Mouse
Theoretical MW (kDa)	22.3kDa
Reactivity	Human
Form	Liquid
Isotype	IgG1
Recommend Usage	ELISA (1:10000) Western Blot (1:500-1:2000) Immunohistochemistry Immunocytochemistry (1:200-1:1000) Flow Cytometry The optimal working dilution should be determined by the end user.
Storage Buffer	In PBS (0.05% sodium azide).
Storage Instruction	Store at 4°C. For long term storage store at -20°C. Aliquot to avoid repeated freezing and thawing.
Note	This product contains sodium azide: a POISONOUS AND HAZARDOUS SUBSTANCE which should be handled by trained staff only.

Applications

- Western Blot (Transfected lysate)

Western Blot analysis of (1) HEK293 cells, (2) IL28A-hlgGfc transfected HEK293 cell lysate.

- Immunocytochemistry

Immunocytochemical staining of HeLa cells with IL28A monoclonal antibody (green). DRAQ5 fluorescent DNA dye (blue). Actin filaments have been labeled with Alexa Fluor- 555 phalloidin (red).

- Enzyme-linked Immunoabsorbent Assay

ELISA analysis of IL28A monoclonal antibody, clone 6H9E6.

Gene Info — IL28A

Entrez GeneID [282616](#)

Gene Name IL28A

Gene Alias	IFNL2, IL-28A
Gene Description	interleukin 28A (interferon, lambda 2)
Omim ID	607401
Gene Ontology	Hyperlink
Gene Summary	<p>This gene encodes a cytokine distantly related to type I interferons and the IL-10 family. This gene, interleukin 28B (IL28B), and interleukin 29 (IL29) are three closely related cytokine genes that form a cytokine gene cluster on a chromosomal region mapped to 19q13. Expression of the cytokines encoded by the three genes can be induced by viral infection. All three cytokines have been shown to interact with a heterodimeric class II cytokine receptor that consists of interleukin 10 receptor, beta (IL10RB) and interleukin 28 receptor, alpha (IL28RA). [provided by RefSeq]</p>
Other Designations	interferon lambda 2 interferon-lambda 2 interleukin 28A

Pathway

- [Cytokine-cytokine receptor interaction](#)
- [Jak-STAT signaling pathway](#)

Disease

- [Hepatitis C](#)