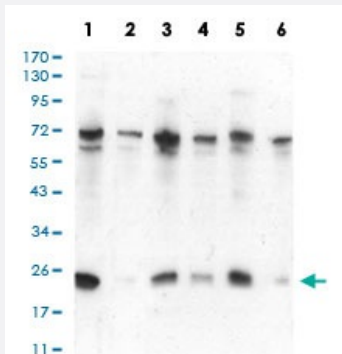


CBX5 monoclonal antibody, clone 3A11F8

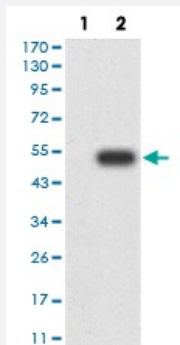
Catalog # MAB17167 Size 100 ug

Applications



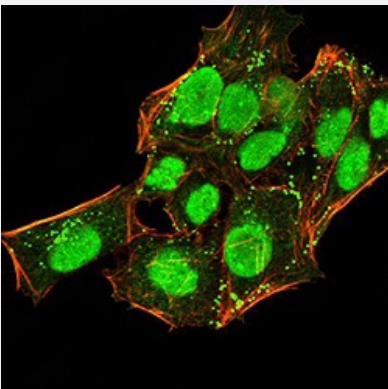
Western Blot (Cell lysate)

Western blot analysis of Lane 1: HeLa cell; Lane 2: NIH/3T3 cell; Lane 3: K562 cell; Lane 4: MCF-7 cell; Lane 5: Jurkat cell; Lane 6: A431 cell with CBX5 monoclonal antibody.



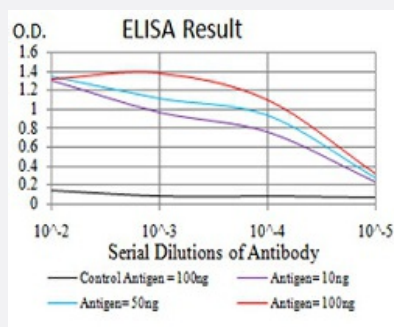
Western Blot (Transfected lysate)

Western Blot analysis of (1) HEK293 cells, (2) CBX5-hlgGfc transfected HEK293 cell lysate.



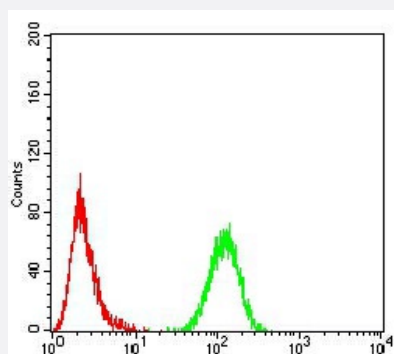
Immunocytochemistry

Immunocytochemical staining of HeLa cells with CBX5 monoclonal antibody (green). DRAQ5 fluorescent DNA dye (blue). Actin filaments have been labeled with Alexa Fluor-555 phalloidin (red).



Enzyme-linked Immunoabsorbent Assay

ELISA analysis of CBX5 monoclonal antibody, clone 3A11F8.



Flow Cytometry

Flow cytometric analysis of HeLa cells with CBX5 monoclonal antibody (green) and negative control (red).

Specification

Product Description	Mouse monoclonal antibody raised against recombinant human CBX5.
Immunogen	Recombinant protein corresponding to amino acid 1-191 of human CBX5 from <i>E. coli</i> .
Host	Mouse
Theoretical MW (kDa)	22.2kDa
Reactivity	Human, Mouse
Form	Liquid
Isotype	IgG1
Recommend Usage	ELISA (1:10000) Western Blot (1:500-1:2000) Immunohistochemistry Immunocytochemistry (1:200-1:1000) Flow Cytometry (1:200-1:400) The optimal working dilution should be determined by the end user.
Storage Buffer	In PBS (0.05% sodium azide).
Storage Instruction	Store at 4°C. For long term storage store at -20°C. Aliquot to avoid repeated freezing and thawing.

Note

This product contains sodium azide: a POISONOUS AND HAZARDOUS SUBSTANCE which should be handled by trained staff only.

Applications

- Western Blot (Cell lysate)

Western blot analysis of Lane 1: HeLa cell; Lane 2: NIH/3T3 cell; Lane 3: K562 cell; Lane 4: MCF-7 cell; Lane 5: Jurkat cell; Lane 6: A431 cell with CBX5 monoclonal antibody.

- Western Blot (Transfected lysate)

Western Blot analysis of (1) HEK293 cells, (2) CBX5-hlgGfc transfected HEK293 cell lysate.

- Immunocytochemistry

Immunocytochemical staining of HeLa cells with CBX5 monoclonal antibody (green). DRAQ5 fluorescent DNA dye (blue). Actin filaments have been labeled with Alexa Fluor- 555 phalloidin (red).

- Enzyme-linked Immunoabsorbent Assay

ELISA analysis of CBX5 monoclonal antibody, clone 3A11F8.

- Flow Cytometry

Flow cytometric analysis of HeLa cells with CBX5 monoclonal antibody (green) and negative control (red).

Gene Info — CBX5

Entrez GeneID	23468
---------------	-----------------------

Gene Name	CBX5
-----------	------

Gene Alias	HP1, HP1A
------------	-----------

Gene Description	chromobox homolog 5 (HP1 alpha homolog, Drosophila)
------------------	---

Omim ID	604478
---------	------------------------

Gene Ontology	Hyperlink
---------------	---------------------------

Gene Summary

This gene encodes a highly conserved nonhistone protein, which is a member of the heterochromatin protein family. The protein is enriched in the heterochromatin and associated with centromeres. The protein has a single N-terminal chromodomain which can bind to histone proteins via methylated lysine residues, and a C-terminal chromo shadow-domain (CSD) which is responsible for the homodimerization and interaction with a number of chromatin-associated nonhistone proteins. The encoded product is involved in the formation of functional kinetochore through interaction with essential kinetochore proteins. The gene has a pseudogene located on chromosome 3. Multiple alternatively spliced variants, encoding the same protein, have been identified. [provided by RefSeq]

Other Designations

HP1-ALPHA|HP1Hs alpha|antigen p25|heterochromatin protein 1 homolog alpha|heterochromatin protein 1-alpha