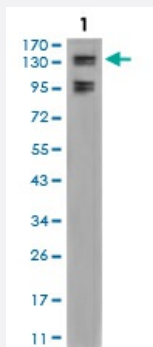


# FBXL10 monoclonal antibody, clone 6F6G11

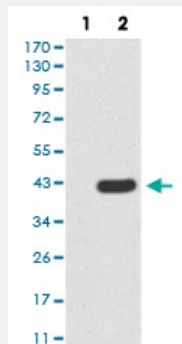
Catalog # MAB17161      Size 100 ug

## Applications



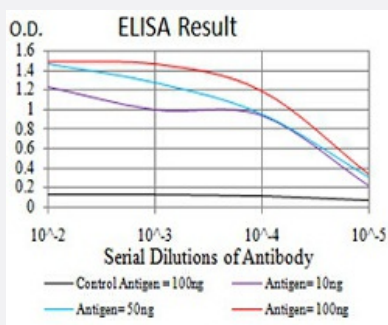
### Western Blot (Cell lysate)

Western blot analysis using FBXL10 monoclonal antibody against A549 cell.



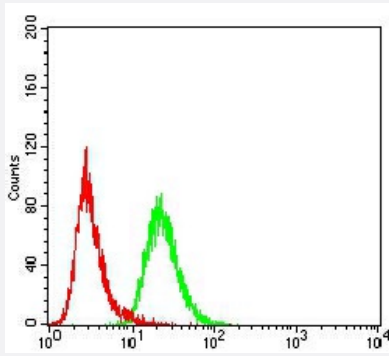
### Western Blot (Transfected lysate)

Western Blot analysis of (1) HEK293 cells, (2) FBXL10-hlgGfc transfected HEK293 cell lysate.



### Enzyme-linked Immunoabsorbent Assay

ELISA analysis of FBXL10 monoclonal antibody, clone 6F6G11.



## Flow Cytometry

Flow cytometric analysis of HeLa cells with FBXL10 monoclonal antibody (green) and negative control (red).

## Specification

<b>Product Description</b>	Mouse monoclonal antibody raised against recombinant human FBXL10.
<b>Immunogen</b>	Recombinant protein corresponding to amino acid 457-555 of human FBXL10 from <i>E. coli</i> .
<b>Host</b>	Mouse
<b>Theoretical MW (kDa)</b>	152.6kDa
<b>Reactivity</b>	Human
<b>Form</b>	Liquid
<b>Isotype</b>	IgG2b
<b>Recommend Usage</b>	ELISA (1:10000) Western Blot (1:500-1:2000) Immunohistochemistry Immunocytochemistry Flow Cytometry (1:200-1:400) The optimal working dilution should be determined by the end user.
<b>Storage Buffer</b>	In PBS (0.05% sodium azide).
<b>Storage Instruction</b>	Store at 4°C. For long term storage store at -20°C. Aliquot to avoid repeated freezing and thawing.
<b>Note</b>	This product contains sodium azide: a POISONOUS AND HAZARDOUS SUBSTANCE which should be handled by trained staff only.

## Applications

- Western Blot (Cell lysate)

Western blot analysis using FBXL10 monoclonal antibody against A549 cell.

- Western Blot (Transfected lysate)

Western Blot analysis of (1) HEK293 cells, (2) FBXL10-hlgGfc transfected HEK293 cell lysate.

- Enzyme-linked Immunoabsorbent Assay

ELISA analysis of FBXL10 monoclonal antibody, clone 6F6G11.

- Flow Cytometry

Flow cytometric analysis of HeLa cells with FBXL10 monoclonal antibody (green) and negative control (red).

## Gene Info — FBXL10

**Entrez GeneID** [84678](#)

**Gene Name** FBXL10

**Gene Alias** CXXC2, Fbl10, JHDM1B, KDM2B, PCCX2

**Gene Description** F-box and leucine-rich repeat protein 10

**Omim ID** [609078](#)

**Gene Ontology** [Hyperlink](#)

**Gene Summary** This gene encodes a member of the F-box protein family which is characterized by an approximately 40 amino acid motif, the F-box. The F-box proteins constitute one of the four subunits of ubiquitin protein ligase complex called SCFs (SKP1-cullin-F-box), which function in phosphorylation-dependent ubiquitination. The F-box proteins are divided into 3 classes: Fbws containing WD-40 domains, Fbls containing leucine-rich repeats, and Fbxs containing either different protein-protein interaction modules or no recognizable motifs. The protein encoded by this gene belongs to the Fbls class. Multiple alternatively spliced transcript variants have been found for this gene, but the full-length nature of some variants has not been determined. [provided by RefSeq]

**Other Designations** JEMMA (Jumonji domain, EMSY-interactor, methyltransferase motif) protein|jumonji C domain-containing histone demethylase 1B|protein containing CXXC domain 2

## Disease

- [Tobacco Use Disorder](#)