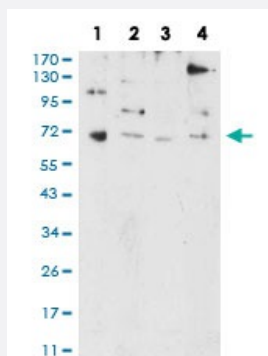


# PRDM5 monoclonal antibody, clone 7D4C12

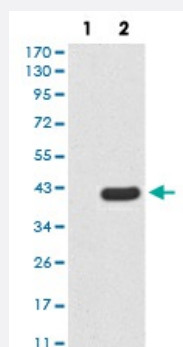
Catalog # MAB17156      Size 100 ug

## Applications



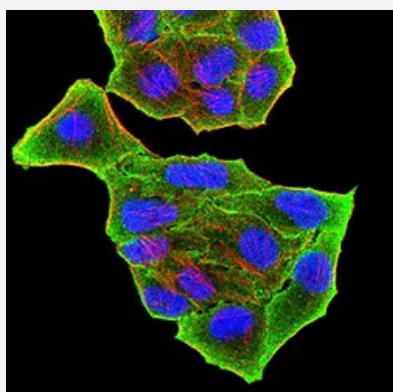
### Western Blot (Cell lysate)

Western blot analysis of Lane 1: HL-60 cell; Lane 2: NIH/3T3 cell; Lane 3: SW480 cell; Lane 4: HEK293 cell with PRDM5 monoclonal antibody.



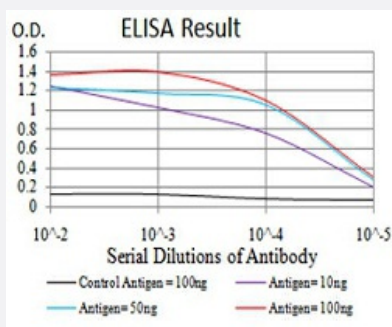
### Western Blot (Transfected lysate)

Western Blot analysis of (1) HEK293 cells, (2) PRDM5-hlgGfc transfected HEK293 cell lysate.



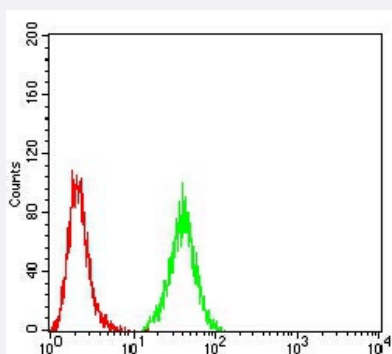
### Immunocytochemistry

Immunocytochemical staining of MCF-7 cells with PRDM5 monoclonal antibody (green). DRAQ5 fluorescent DNA dye (blue). Actin filaments have been labeled with Alexa Fluor- 555 phalloidin (red).



## Enzyme-linked Immunoabsorbent Assay

ELISA analysis of PRDM5 monoclonal antibody, clone 7D4C12.



## Flow Cytometry

Flow cytometric analysis of HeLa cells with PRDM5 monoclonal antibody (green) and negative control (red).

## Specification

<b>Product Description</b>	Mouse monoclonal antibody raised against recombinant human PRDM5.
<b>Immunogen</b>	Recombinant protein corresponding to amino acid 1-100 of human PRDM5 from <i>E. coli</i> .
<b>Host</b>	Mouse
<b>Theoretical MW (kDa)</b>	73kDa
<b>Reactivity</b>	Human, Mouse
<b>Form</b>	Liquid
<b>Isotype</b>	IgG1
<b>Recommend Usage</b>	ELISA (1:10000) Western Blot (1:500-1:2000) Immunohistochemistry Immunocytochemistry (1:100-1:500) Flow Cytometry (1:200-1:400) The optimal working dilution should be determined by the end user.
<b>Storage Buffer</b>	In PBS (0.05% sodium azide).
<b>Storage Instruction</b>	Store at 4°C. For long term storage store at -20°C. Aliquot to avoid repeated freezing and thawing.

**Note**

This product contains sodium azide: a POISONOUS AND HAZARDOUS SUBSTANCE which should be handled by trained staff only.

## Applications

- Western Blot (Cell lysate)

Western blot analysis of Lane 1: HL-60 cell; Lane 2: NIH/3T3 cell; Lane 3: SW480 cell; Lane 4: HEK293 cell with PRDM5 monoclonal antibody.

- Western Blot (Transfected lysate)

Western Blot analysis of (1) HEK293 cells, (2) PRDM5-hlgGfc transfected HEK293 cell lysate.

- Immunocytochemistry

Immunocytochemical staining of MCF-7 cells with PRDM5 monoclonal antibody (green). DRAQ5 fluorescent DNA dye (blue). Actin filaments have been labeled with Alexa Fluor- 555 phalloidin (red).

- Enzyme-linked Immunoabsorbent Assay

ELISA analysis of PRDM5 monoclonal antibody, clone 7D4C12.

- Flow Cytometry

Flow cytometric analysis of HeLa cells with PRDM5 monoclonal antibody (green) and negative control (red).

## Gene Info — PRDM5

Entrez GeneID	<a href="#">11107</a>
---------------	-----------------------

Gene Name	PRDM5
-----------	-------

Gene Alias	PFM2
------------	------

Gene Description	PR domain containing 5
------------------	------------------------

Gene Ontology	<a href="#">Hyperlink</a>
---------------	---------------------------

Gene Summary	The protein encoded by this gene is a transcription factor of the PR-domain protein family. It contains a PR-domain and multiple zinc finger motifs. Transcription factors of the PR-domain family are known to be involved in cell differentiation and tumorigenesis. [provided by RefSeq]
--------------	---

Other Designations	-
--------------------	---

## Disease

- [Alcoholism](#)
- [Genetic Predisposition to Disease](#)
- [Tobacco Use Disorder](#)