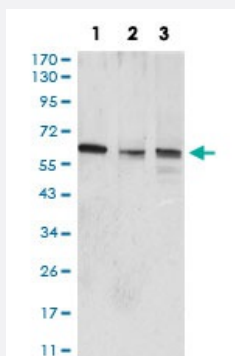


WNT3A monoclonal antibody, clone 1E6G4

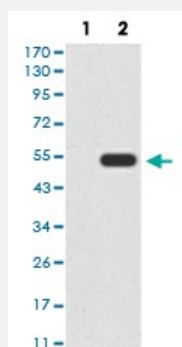
Catalog # MAB17152 Size 100 ug

Applications



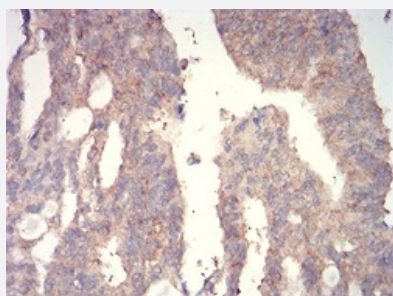
Western Blot (Cell lysate)

Western blot analysis of Lane 1: A549 cell; Lane 2: HepG2 cell; Lane 3: A431 cell with WNT3A monoclonal antibody.



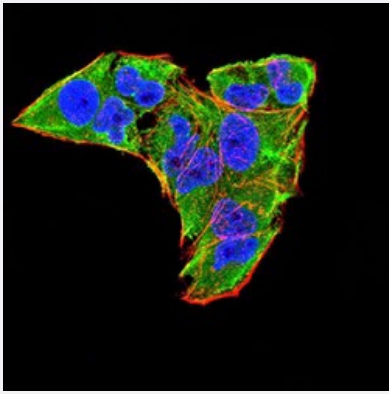
Western Blot (Transfected lysate)

Western Blot analysis of (1) HEK293 cells, (2) WNT3A-hlgGfc transfected HEK293 cell lysate.



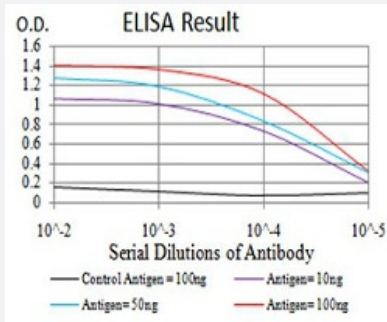
Immunohistochemistry (Formalin/PFA-fixed paraffin-embedded sections)

Immunohistochemical staining of paraffin-embedded rectum cancer tissues with WNT3A monoclonal antibody.



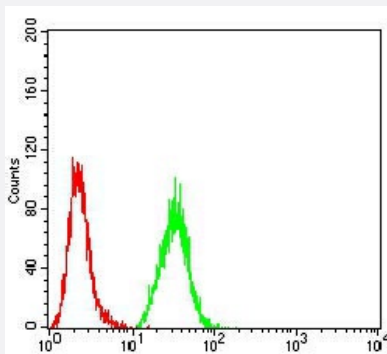
Immunocytochemistry

Immunocytochemical staining of HeLa cells with WNT3A monoclonal antibody (green). DRAQ5 fluorescent DNA dye (blue). Actin filaments have been labeled with Alexa Fluor-555 phalloidin (red).



Enzyme-linked Immunoabsorbent Assay

ELISA analysis of WNT3A monoclonal antibody, clone 1E6G4.



Flow Cytometry

Flow cytometric analysis of HeLa cells with WNT3A monoclonal antibody (green) and negative control (red).

Specification

Product Description	Mouse monoclonal antibody raised against recombinant human WNT3A.
Immunogen	Recombinant protein corresponding to amino acid 170-352 of human WNT3A from <i>E. coli</i> .
Host	Mouse
Theoretical MW (kDa)	39.4kDa
Reactivity	Human
Form	Liquid
Isotype	IgG2b

Recommend Usage	ELISA (1:10000) Western Blot (1:500-1:2000) Immunohistochemistry (1:200-1:1000) Immunocytochemistry (1:200-1:1000) Flow Cytometry (1:200-1:400) The optimal working dilution should be determined by the end user.
Storage Buffer	In PBS (0.05% sodium azide).
Storage Instruction	Store at 4°C. For long term storage store at -20°C. Aliquot to avoid repeated freezing and thawing.
Note	This product contains sodium azide: a POISONOUS AND HAZARDOUS SUBSTANCE which should be handled by trained staff only.

Applications

- Western Blot (Cell lysate)

Western blot analysis of Lane 1: A549 cell; Lane 2: HepG2 cell; Lane 3: A431 cell with WNT3A monoclonal antibody.

- Western Blot (Transfected lysate)

Western Blot analysis of (1) HEK293 cells, (2) WNT3A-hlgGfC transfected HEK293 cell lysate.

- Immunohistochemistry (Formalin/PFA-fixed paraffin-embedded sections)

Immunohistochemical staining of paraffin-embedded rectum cancer tissues with WNT3A monoclonal antibody.

- Immunocytochemistry

Immunocytochemical staining of HeLa cells with WNT3A monoclonal antibody (green). DRAQ5 fluorescent DNA dye (blue). Actin filaments have been labeled with Alexa Fluor- 555 phalloidin (red).

- Enzyme-linked Immunoabsorbent Assay

ELISA analysis of WNT3A monoclonal antibody, clone 1E6G4.

- Flow Cytometry

Flow cytometric analysis of HeLa cells with WNT3A monoclonal antibody (green) and negative control (red).

Gene Info — WNT3A

Entrez GeneID [89780](#)

Gene Name WNT3A

Gene Alias	MGC119418, MGC119419, MGC119420
Gene Description	wingless-type MMTV integration site family, member 3A
Omim ID	606359
Gene Ontology	Hyperlink
Gene Summary	<p>The WNT gene family consists of structurally related genes which encode secreted signaling proteins. These proteins have been implicated in oncogenesis and in several developmental processes, including regulation of cell fate and patterning during embryogenesis. This gene is a member of the WNT gene family. It encodes a protein which shows 96% amino acid identity to mouse Wnt 3A protein, and 84% to human WNT3 protein, another WNT gene product. This gene is clustered with WNT14 gene, another family member, in chromosome 1q42 region. [provided by RefSeq]</p>
Other Designations	OTTHUMP00000035713

Pathway

- [Basal cell carcinoma](#)
- [Hedgehog signaling pathway](#)
- [Melanogenesis](#)
- [Pathways in cancer](#)
- [Wnt signaling pathway](#)

Disease

- [Cleft Lip](#)
- [Cleft Palate](#)
- [Genetic Predisposition to Disease](#)