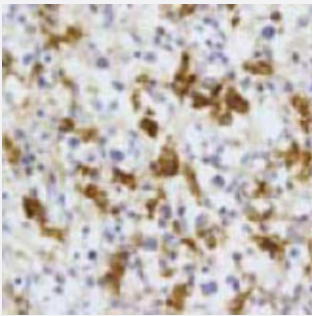


CD68 monoclonal antibody, clone PM-1K

Catalog # MAB1715

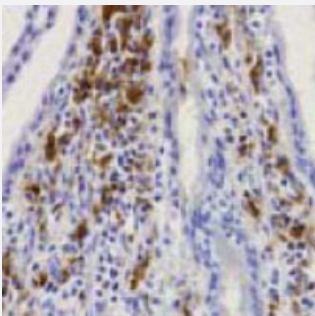
Size 50 ug

Applications



Immunohistochemistry (Frozen sections)

Immunohistochemical analysis of human spleen tissue, using CD68 monoclonal antibody, clone PM-1K (Cat # MAB1715, 10 ug/mL).



Immunohistochemistry

Immunohistochemical analysis of guinea pig small intestine tissue, using CD68 monoclonal antibody, clone PM-1K (Cat # MAB1715, 10 ug/mL).

Specification

Product Description	Mouse monoclonal antibody raised against native CD68.
Immunogen	Native purified from human peritoneal cells from patients with endometriosis.
Host	Mouse
Reactivity	Guinea pig, Human
Form	Liquid
Isotype	IgG2b, kappa

Recommend Usage	Immunohistochemistry (10 ug/mL) The optimal working dilution should be determined by the end user.
------------------------	---

Storage Buffer	In PBS (0.1% proclin, 2.0% Block Ace)
-----------------------	---------------------------------------

Storage Instruction	Store at -20°C. Aliquot to avoid repeated freezing and thawing.
----------------------------	--

Applications

- Immunohistochemistry (Frozen sections)

Immunohistochemical analysis of human spleen tissue, using CD68 monoclonal antibody, clone PM-1K (Cat # MAB1715, 10 ug/mL).

- Immunohistochemistry

Immunohistochemical analysis of guinea pig small intestine tissue, using CD68 monoclonal antibody, clone PM-1K (Cat # MAB1715, 10 ug/mL).

Gene Info — CD68

Entrez GeneID	968
----------------------	---------------------

Gene Name	CD68
------------------	------

Gene Alias	DKFZp686M18236, GP110, SCARD1
-------------------	-------------------------------

Gene Description	CD68 molecule
-------------------------	---------------

Omim ID	153634
----------------	------------------------

Gene Ontology	Hyperlink
----------------------	---------------------------

Gene Summary	This gene encodes a 110-kD transmembrane glycoprotein that is highly expressed by human monocytes and tissue macrophages. It is a member of the lysosomal/endosomal-associated membrane glycoprotein (LAMP) family. The protein primarily localizes to lysosomes and endosomes with a smaller fraction circulating to the cell surface. It is a type I integral membrane protein with a heavily glycosylated extracellular domain and binds to tissue- and organ-specific lectins or selectins. The protein is also a member of the scavenger receptor family. Scavenger receptors typically function to clear cellular debris, promote phagocytosis, and mediate the recruitment and activation of macrophages. Alternative splicing results in multiple transcripts encoding different isoforms. [provided by RefSeq]
---------------------	---

Other Designations	CD68 antigen OTTHUMP00000135285 macrophage antigen CD68 macrosialin scavenger receptor class D, member 1
---------------------------	--

Publication Reference

- [Effect of Hypoxia Preconditioning on the Regenerative Capacity of Adipose Tissue Derived Mesenchymal Stem Cells in a Model of Renal Artery Stenosis.](#)

Naba Farooqui, Arjunmohan Mohan, Busra Isik, Busra B Goksu, Roman Thaler, Xiang Yang Zhu, James D Krier, Ishran M Saadiq, Christopher M Ferguson, Kyra L Jordan, Hui Tang, Stephen C Textor, La Tonya J Hickson, Andre J van Wijnen, Alfonso Eirin, Lilach O Lerman, Sandra M Herrmann.

Stem Cells 2022 Oct; sxac073.

Application: IF, Pig, Pig renal

- [Biocompatible Tissue Graft.](#)

Kathleen Anne Derwin, Anthony Calabro.

United States Patent Application Publication 2016 Mar; [Epub].

Application: IF, Human, Acellular dermis matrix

- [Durable Benefits of Cellular Postconditioning: Long-Term Effects of Allogeneic Cardiosphere-Derived Cells Infused After Reperfusion in Pigs with Acute Myocardial Infarction.](#)

Kanazawa H, Tseliou E, Dawkins JF, De Couto G, Gallet R, Malliaras K, Yee K, Kreke M, Valle I, Smith RR, Middleton RC, Ho CS, Dharmakumar R, Li D, Makkar RR, Fukuda K, Marbán L, Marbán E.

Journal of the American Heart Association 2016 Feb; 5(2):e002796.

Application: IS, Pig, Cardiosphere-derived cells

- [Detection of guinea pig macrophages by a new CD68 monoclonal antibody, PM-1K.](#)

Horikawa T, Komohara Y, Kiyota E, Terasaki Y, Takagi K, Takeya M.

Journal of Molecular Histology 2006 Jan; 37(1-2):15.

Application: IF, IHC-Fr, IHC-P, IP, Human, Mouse, Human spleen, macrophages, Mouse tissues

- [Distribution and cytological properties of macrophages in human Fallopian tubes.](#)

Suenaga Y, Katabuchi H, Fukumatsu Y, Okamura H.

Acta Anatomica 1998 Jul; 163(1):10.

- [Role of macrophage tissue factor in the development of the delayed hypersensitivity reaction in monkey skin.](#)

Imamura T, Iyama K, Takeya M, Kambara T, Nakamura S.

Cellular Immunology 1993 Dec; 152(2):614.

- [Factor XIII-dependent generation of 5th complement component\(C5\)-derived monocyte chemotactic factor coinciding with plasma clotting.](#)

Okamoto M, Yamamoto T, Matsubara S, Kukita I, Takeya M, Miyauchi Y, Kambara T.

Biochimica et Biophysica Acta 1992 Jan; 1138(1):53.

Pathway

- [Lysosome](#)