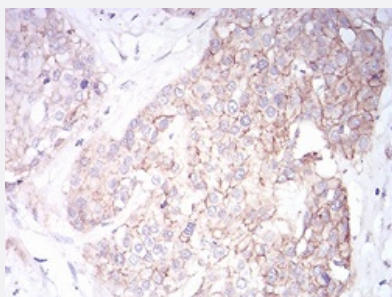


SPHK2 monoclonal antibody, clone 3C8D3

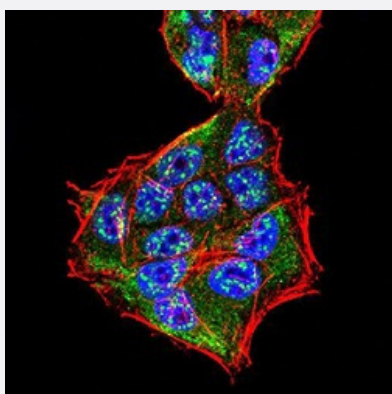
Catalog # MAB17142 Size 100 ug

Applications



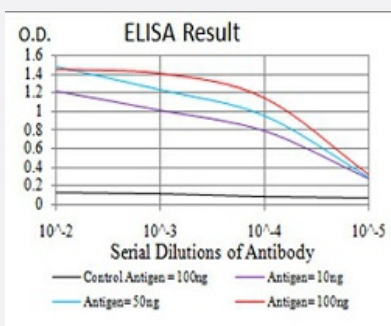
Immunohistochemistry (Formalin/PFA-fixed paraffin-embedded sections)

Immunohistochemical staining of paraffin-embedded ovarian cancer tissues with SPHK2 monoclonal antibody.



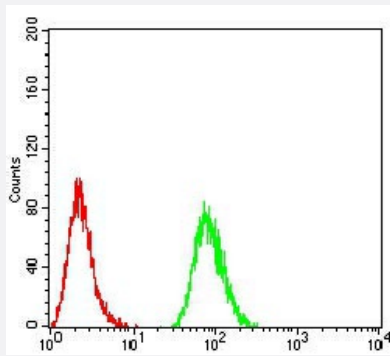
Immunocytochemistry

Immunocytochemical staining of HeLa cells with SPHK2 monoclonal antibody (green). DRAQ5 fluorescent DNA dye (blue). Actin filaments have been labeled with Alexa Fluor-555 phalloidin (red).



Enzyme-linked Immunoabsorbent Assay

ELISA analysis of SPHK2 monoclonal antibody, clone 3C8D3.



Flow Cytometry

Flow cytometric analysis of HeLa cells with SPHK2 monoclonal antibody (green) and negative control (red).

Specification

Product Description	Mouse monoclonal antibody raised against synthetic peptide of human SPHK2.
Immunogen	A synthetic peptide corresponding to amino acid 36-52 of human SPHK2.
Host	Mouse
Theoretical MW (kDa)	69.2kDa
Reactivity	Human
Form	Liquid
Isotype	IgG1
Recommend Usage	ELISA (1:10000) Western Blot Immunohistochemistry (1:200-1:1000) Immunocytochemistry (1:200-1:1000) Flow Cytometry (1:200-1:400) The optimal working dilution should be determined by the end user.
Storage Buffer	In PBS (0.05% sodium azide).
Storage Instruction	Store at 4°C. For long term storage store at -20°C. Aliquot to avoid repeated freezing and thawing.
Note	This product contains sodium azide: a POISONOUS AND HAZARDOUS SUBSTANCE which should be handled by trained staff only.

Applications

- Immunohistochemistry (Formalin/PFA-fixed paraffin-embedded sections)

Immunohistochemical staining of paraffin-embedded ovarian cancer tissues with SPHK2 monoclonal antibody.

- Immunocytochemistry

Immunocytochemical staining of HeLa cells with SPHK2 monoclonal antibody (green). DRAQ5 fluorescent DNA dye (blue). Actin filaments have been labeled with Alexa Fluor- 555 phalloidin (red).

- Enzyme-linked Immunoabsorbent Assay

ELISA analysis of SPHK2 monoclonal antibody, clone 3C8D3.

- Flow Cytometry

Flow cytometric analysis of HeLa cells with SPHK2 monoclonal antibody (green) and negative control (red).

Gene Info — SPHK2

Entrez GeneID	56848
---------------	-----------------------

Gene Name	SPHK2
-----------	-------

Gene Alias	-
------------	---

Gene Description	sphingosine kinase 2
------------------	----------------------

Omim ID	607092
---------	------------------------

Gene Ontology	Hyperlink
---------------	---------------------------

Other Designations	sphingosine kinase type 2 isoform
--------------------	-----------------------------------

Pathway

- [Calcium signaling pathway](#)
- [Fc gamma R-mediated phagocytosis](#)
- [Metabolic pathways](#)
- [Sphingolipid metabolism](#)
- [VEGF signaling pathway](#)