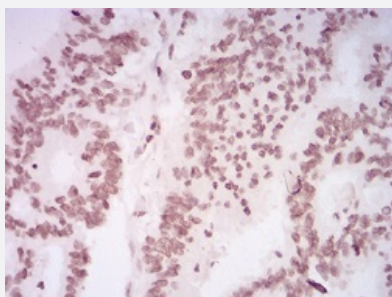


HIST2H4A(20Me) monoclonal antibody, clone 3E7H2

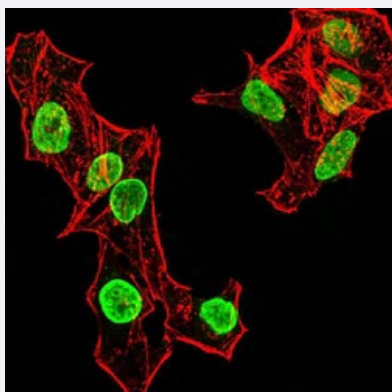
Catalog # MAB17140 Size 100 ug

Applications



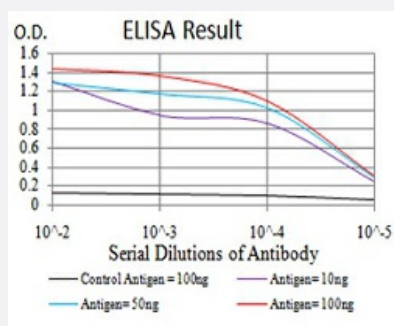
Immunohistochemistry (Formalin/PFA-fixed paraffin-embedded sections)

Immunohistochemical staining of paraffin-embedded rectum cancer tissues with HIST2H4A(20Me) monoclonal antibody.



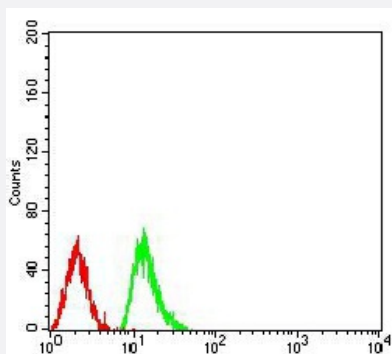
Immunocytochemistry

Immunocytochemical staining of HeLa cells with HIST2H4A(20Me) monoclonal antibody (green). DRAQ5 fluorescent DNA dye (blue). Actin filaments have been labeled with Alexa Fluor-555 phalloidin (red).



Enzyme-linked Immunoabsorbent Assay

ELISA analysis of HIST2H4A(20Me) monoclonal antibody, clone 3E7H2.



Flow Cytometry

Flow cytometric analysis of Raji cells with HIST2H4A(20Me) monoclonal antibody (green) and negative control (red).

Specification

Product Description	Mouse monoclonal antibody raised against synthetic peptide of human HIST2H4A(20Me).
Immunogen	A synthetic peptide corresponding to amino acid of human HIST2H4A(20Me).
Host	Mouse
Theoretical MW (kDa)	11.4kDa
Reactivity	Human
Form	Liquid
Isotype	IgG1
Recommend Usage	ELISA (1:10000) Western Blot (1:500-1:2000) Immunohistochemistry (1:200-1:1000) Immunocytochemistry (1:200-1:1000) Flow Cytometry (1:200-1:400) The optimal working dilution should be determined by the end user.
Storage Buffer	In PBS (0.05% sodium azide).
Storage Instruction	Store at 4°C. For long term storage store at -20°C. Aliquot to avoid repeated freezing and thawing.
Note	This product contains sodium azide: a POISONOUS AND HAZARDOUS SUBSTANCE which should be handled by trained staff only.

Applications

- Immunohistochemistry (Formalin/PFA-fixed paraffin-embedded sections)

Immunohistochemical staining of paraffin-embedded rectum cancer tissues with HIST2H4A(20Me) monoclonal antibody.

- Immunocytochemistry

Immunocytochemical staining of HeLa cells with HIST2H4A(20Me) monoclonal antibody (green). DRAQ5 fluorescent DNA dye (blue). Actin filaments have been labeled with Alexa Fluor- 555 phalloidin (red).

- Enzyme-linked Immunoabsorbent Assay

ELISA analysis of HIST2H4A(20Me) monoclonal antibody, clone 3E7H2.

- Flow Cytometry

Flow cytometric analysis of Raji cells with HIST2H4A(20Me) monoclonal antibody (green) and negative control (red).

Gene Info — HIST2H4A

Entrez GeneID [8370](#)

Gene Name HIST2H4A

Gene Alias FO108, H4, H4/n, H4F2, H4FN, HIST2H4

Gene Description histone cluster 2, H4a

Omim ID [142750](#)

Gene Ontology [Hyperlink](#)

Gene Summary Histones are basic nuclear proteins that are responsible for the nucleosome structure of the chromosomal fiber in eukaryotes. This structure consists of approximately 146 bp of DNA wrapped around a nucleosome, an octamer composed of pairs of each of the four core histones (H2A, H2B, H3, and H4). The chromatin fiber is further compacted through the interaction of a linker histone, H1, with the DNA between the nucleosomes to form higher order chromatin structures. This gene is intronless and encodes a member of the histone H4 family. Transcripts from this gene lack polyA tails; instead, they contain a palindromic termination element. This gene is found in a histone cluster on chromosome 1. This gene is one of four histone genes in the cluster that are duplicated; this record represents the centromeric copy. [provided by RefSeq]

Other Designations H4 histone family, member N|H4 histone, family 2|OTTHUMP00000013906|OTTHUMP00000194862|OTTHUMP00000194863|histone 2, H4a|histone IV, family 2

Pathway

- [Systemic lupus erythematosus](#)