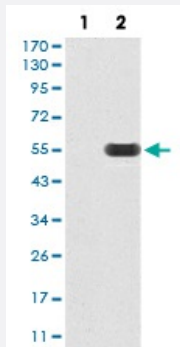


RAB3A monoclonal antibody, clone 6D1A12

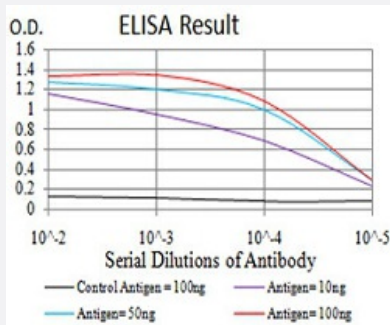
Catalog # MAB17135 Size 100 ug

Applications



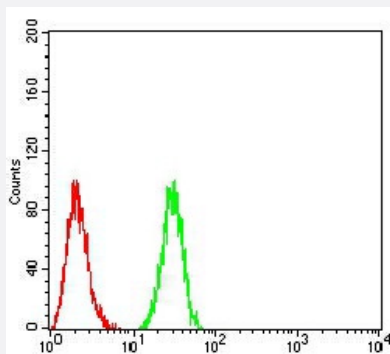
Western Blot (Transfected lysate)

Western Blot analysis of (1) HEK293 cells, (2) RAB3A-hlgGfC transfected HEK293 cell lysate.



Enzyme-linked Immunoabsorbent Assay

ELISA analysis of RAB3A monoclonal antibody, clone 6D1A12.



Flow Cytometry

Flow cytometric analysis of HeLa cells with RAB3A monoclonal antibody (green) and negative control (red).

Specification

Product Description

Mouse monoclonal antibody raised against recombinant human RAB3A.

Immunogen	Recombinant protein corresponding to amino acid 1-220 of human RAB3A from <i>E. coli</i> .
Host	Mouse
Theoretical MW (kDa)	25kDa
Reactivity	Human
Form	Liquid
Isotype	IgG1
Recommend Usage	ELISA (1:10000) Western Blot (1:500-1:2000) Immunohistochemistry Immunocytochemistry Flow Cytometry (1:200-1:400) The optimal working dilution should be determined by the end user.
Storage Buffer	In PBS (0.05% sodium azide).
Storage Instruction	Store at 4°C. For long term storage store at -20°C. Aliquot to avoid repeated freezing and thawing.
Note	This product contains sodium azide: a POISONOUS AND HAZARDOUS SUBSTANCE which should be handled by trained staff only.

Applications

- Western Blot (Transfected lysate)

Western Blot analysis of (1) HEK293 cells, (2) RAB3A-hlgGfc transfected HEK293 cell lysate.

- Enzyme-linked Immunoabsorbent Assay

ELISA analysis of RAB3A monoclonal antibody, clone 6D1A12.

- Flow Cytometry

Flow cytometric analysis of HeLa cells with RAB3A monoclonal antibody (green) and negative control (red).

Gene Info — RAB3A

Entrez GeneID	5864
Gene Name	RAB3A
Gene Alias	-

Gene Description	RAB3A, member RAS oncogene family
Omim ID	179490
Gene Ontology	Hyperlink
Gene Summary	O
Other Designations	RAS-associated protein RAB3A

Disease

- [Genetic Predisposition to Disease](#)
- [Mental Retardation](#)