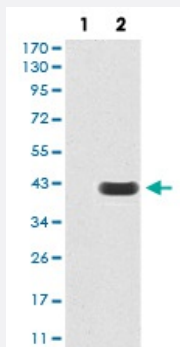


# RAD18 monoclonal antibody, clone 2G8D12

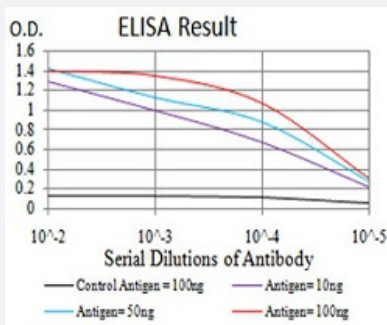
Catalog # MAB17130 Size 100 ug

## Applications



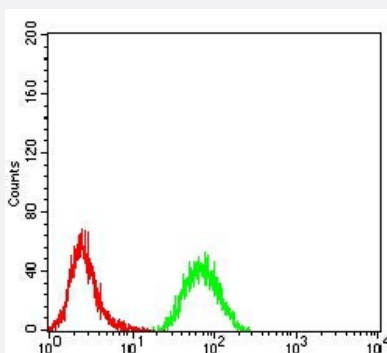
### Western Blot (Transfected lysate)

Western Blot analysis of (1) HEK293 cells, (2) RAD18-hlgGfC transfected HEK293 cell lysate.



### Enzyme-linked Immunoabsorbent Assay

ELISA analysis of RAD18 monoclonal antibody, clone 2G8D12.



### Flow Cytometry

Flow cytometric analysis of K562 cells with RAD18 monoclonal antibody (green) and negative control (red).

## Specification

### Product Description

Mouse monoclonal antibody raised against recombinant human RAD18.

Immunogen	Recombinant protein corresponding to amino acid 332-430 of human RAD18 from <i>E. coli</i> .
Host	Mouse
Theoretical MW (kDa)	56.2kDa
Reactivity	Human
Form	Liquid
Isotype	IgG1
Recommend Usage	ELISA (1:10000) Western Blot (1:500-1:2000) Immunohistochemistry Immunocytochemistry Flow Cytometry (1:200-1:400) The optimal working dilution should be determined by the end user.
Storage Buffer	In PBS (0.05% sodium azide).
Storage Instruction	Store at 4°C. For long term storage store at -20°C. Aliquot to avoid repeated freezing and thawing.
Note	This product contains sodium azide: a POISONOUS AND HAZARDOUS SUBSTANCE which should be handled by trained staff only.

## Applications

- Western Blot (Transfected lysate)

Western Blot analysis of (1) HEK293 cells, (2) RAD18-hlgGFc transfected HEK293 cell lysate.

- Enzyme-linked Immunoabsorbent Assay

ELISA analysis of RAD18 monoclonal antibody, clone 2G8D12.

- Flow Cytometry

Flow cytometric analysis of K562 cells with RAD18 monoclonal antibody (green) and negative control (red).

## Gene Info — RAD18

Entrez GeneID	<a href="#">56852</a>
Gene Name	RAD18
Gene Alias	RNF73

Gene Description	RAD18 homolog (S. cerevisiae)
Omim ID	<a href="#">605256</a>
Gene Ontology	<a href="#">Hyperlink</a>
Gene Summary	<p>The protein encoded by this gene is highly similar to S. cerevisiae DNA damage repair protein Rad18. Yeast Rad18 functions through its interaction with Rad6, which is an ubiquitin-conjugating enzyme required for post-replication repair of damaged DNA. Similar to its yeast counterpart, this protein is able to interact with the human homolog of yeast Rad6 protein through a conserved ring-finger motif. Mutation of this motif results in defective replication of UV-damaged DNA and hyper sensitivity to multiple mutagens. [provided by RefSeq]</p>
Other Designations	RAD18, S. cerevisiae, homolog postreplication repair protein hRAD18p

## Disease

- [Adenocarcinoma](#)
- [Breast Neoplasms](#)
- [Carcinoma](#)
- [Colorectal Neoplasms](#)
- [Esophageal Neoplasms](#)
- [Genetic Predisposition to Disease](#)
- [Kidney Failure](#)
- [Lung Neoplasms](#)
- [Neoplasms](#)