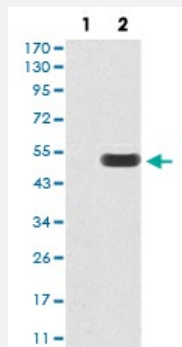


SALL4 monoclonal antibody, clone 1E11A4

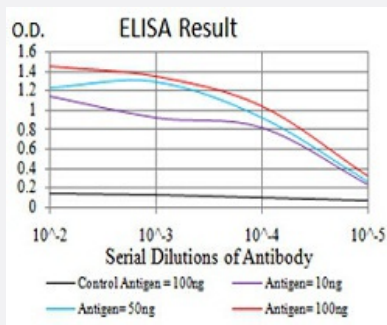
Catalog # MAB17129 Size 100 ug

Applications



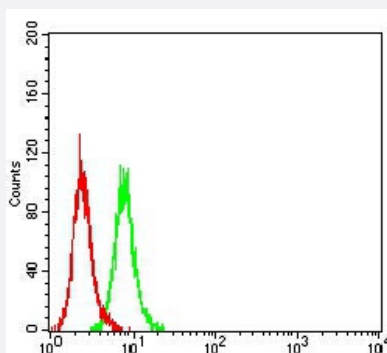
Western Blot (Transfected lysate)

Western Blot analysis of (1) HEK293 cells, (2) SALL4-hlgGfC transfected HEK293 cell lysate.



Enzyme-linked Immunoabsorbent Assay

ELISA analysis of SALL4 monoclonal antibody, clone 1E11A4.



Flow Cytometry

Flow cytometric analysis of HeLa cells with SALL4 monoclonal antibody (green) and negative control (red).

Specification

Product Description

Mouse monoclonal antibody raised against recombinant human SALL4.

Immunogen	Recombinant protein corresponding to amino acid 954-1053 of human SALL4 from <i>E. coli</i> .
Host	Mouse
Theoretical MW (kDa)	112.2kDa
Reactivity	Human
Form	Liquid
Isotype	IgG2a
Recommend Usage	ELISA (1:10000) Western Blot (1:500-1:2000) Immunohistochemistry Immunocytochemistry Flow Cytometry (1:200-1:400) The optimal working dilution should be determined by the end user.
Storage Buffer	In PBS (0.05% sodium azide).
Storage Instruction	Store at 4°C. For long term storage store at -20°C. Aliquot to avoid repeated freezing and thawing.
Note	This product contains sodium azide: a POISONOUS AND HAZARDOUS SUBSTANCE which should be handled by trained staff only.

Applications

- Western Blot (Transfected lysate)

Western Blot analysis of (1) HEK293 cells, (2) SALL4-hlgGfC transfected HEK293 cell lysate.

- Enzyme-linked Immunoabsorbent Assay

ELISA analysis of SALL4 monoclonal antibody, clone 1E11A4.

- Flow Cytometry

Flow cytometric analysis of HeLa cells with SALL4 monoclonal antibody (green) and negative control (red).

Gene Info — SALL4

Entrez GeneID	57167
Gene Name	SALL4
Gene Alias	DRRS, HSAL4, MGC133050, ZNF797, dJ1112F19.1

Gene Description	sal-like 4 (Drosophila)
Omim ID	147750 607323 607343
Gene Ontology	Hyperlink
Gene Summary	The protein encoded by this gene may be a zinc finger transcription factor. Defects in this gene are a cause of Duane-radial ray syndrome (DRRS). [provided by RefSeq]
Other Designations	OTTHUMP00000031296 sal-like 4

Disease

- [Cleft Lip](#)
- [Cleft Palate](#)
- [Genetic Predisposition to Disease](#)
- [Tobacco Use Disorder](#)