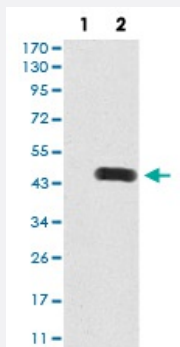


RAB8A monoclonal antibody, clone 7G8B11

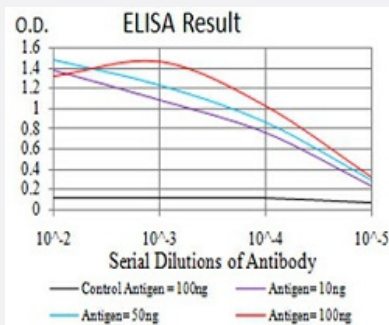
Catalog # MAB17123 Size 100 ug

Applications



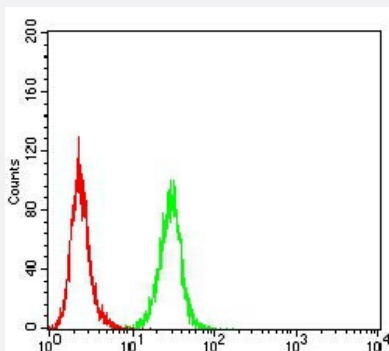
Western Blot (Transfected lysate)

Western Blot analysis of (1) HEK293 cells, (2) RAB8A-hlgGfC transfected HEK293 cell lysate.



Enzyme-linked Immunoabsorbent Assay

ELISA analysis of RAB8A monoclonal antibody, clone 7G8B11.



Flow Cytometry

Flow cytometric analysis of HeLa cells with RAB8A monoclonal antibody (green) and negative control (red).

Specification

Product Description

Mouse monoclonal antibody raised against recombinant human RAB8A.

Immunogen	Recombinant protein corresponding to amino acid 68-207 of human RAB8A from <i>E. coli</i> .
Host	Mouse
Theoretical MW (kDa)	23.7kDa
Reactivity	Human
Form	Liquid
Isotype	IgG2b
Recommend Usage	ELISA (1:10000) Western Blot (1:500-1:2000) Immunohistochemistry Immunocytochemistry Flow Cytometry (1:200-1:400) The optimal working dilution should be determined by the end user.
Storage Buffer	In PBS (0.05% sodium azide).
Storage Instruction	Store at 4°C. For long term storage store at -20°C. Aliquot to avoid repeated freezing and thawing.
Note	This product contains sodium azide: a POISONOUS AND HAZARDOUS SUBSTANCE which should be handled by trained staff only.

Applications

- Western Blot (Transfected lysate)

Western Blot analysis of (1) HEK293 cells, (2) RAB8A-hlgGfc transfected HEK293 cell lysate.

- Enzyme-linked Immunoabsorbent Assay

ELISA analysis of RAB8A monoclonal antibody, clone 7G8B11.

- Flow Cytometry

Flow cytometric analysis of HeLa cells with RAB8A monoclonal antibody (green) and negative control (red).

Gene Info — RAB8A

Entrez GeneID	4218
Gene Name	RAB8A
Gene Alias	MEL, RAB8

Gene Description	RAB8A, member RAS oncogene family
Omim ID	165040
Gene Ontology	Hyperlink
Gene Summary	<p>The protein encoded by this gene is a member of the RAS superfamily which are small GTP/GDP-binding proteins with an average size of 200 amino acids. The RAS-related proteins of the RAB/YPT family may play a role in the transport of proteins from the endoplasmic reticulum to the Golgi and the plasma membrane. This protein shares 97%, 96%, and 51% similarity with the dog RAB8, mouse MEL, and mouse YPT1 proteins, respectively and contains the 4 GTP/GDP-binding sites that are present in all the RAS proteins. The putative effector-binding site of this protein is similar to that of the RAB/YPT proteins. However, this protein contains a C-terminal CAAX motif that is characteristic of many RAS superfamily members but which is not found in YPT1 and the majority of RAB proteins. Although this gene was isolated as a transforming gene from a melanoma cell line, no linkage between MEL and malignant melanoma has been demonstrable. This oncogene is located 800 kb distal to MY09B on chromosome 19p13.1. [provided by RefSeq]</p>
Other Designations	mel transforming oncogene mel transforming oncogene (RAB8 homolog) mel transforming oncogene (derived from cell line NK14) mel transforming oncogene (derived from cell line NK14)- RAB8 homolog ras-associated protein RAB8