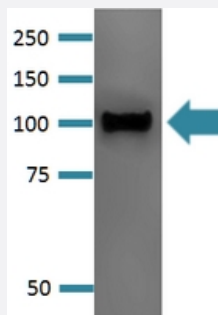


Pcdhga1 monoclonal antibody, clone S159-5 (HRP)

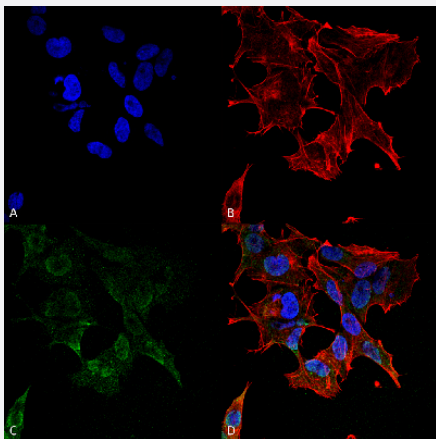
Catalog # MAB17078 Size 100 ug

Applications



Western Blot (Tissue lysate)

Western Blot analysis of rat brain membrane lysate with Pcdhga1 monoclonal antibody, clone S159-5 (HRP) (Cat # MAB17078).



Immunocytochemistry

Immunocytochemical staining of SK-N-BE with Pcdhga1 monoclonal antibody, clone S159-5 (HRP) (Cat # MAB17078). (A) DAPI (blue) nuclear stain (B) Phalloidin Texas Red F-Actin stain (C) Protocadherin Gamma (pan) Antibody and (D) Composite.

Specification

Product Description	Mouse monoclonal antibody raised against partial recombinant mouse Pcdhga1.
Immunogen	Recombinant protein corresponding to amino acids 808-931 at C-terminus of mouse Pcdhga1.
Host	Mouse
Reactivity	Human, Mouse, Rat
Specificity	This antibody crossreacts with all Gamma-protocadherin-A, -B and -C proteins.

Form	Liquid
Conjugation	HRP
Purification	Protein G purification
Isotype	IgG1
Recommend Usage	Immunocytochemistry (1:100) Immunofluorescence (1:100) Immunohistochemistry (Formalin/PFA-fixed paraffin-embedded sections) Western Blot (1:1000) The optimal working dilution should be determined by the end user.
Storage Buffer	In PBS, pH 7.4 (50% glycerol, 0.09% sodium azide).
Storage Instruction	Store at -20°C.
Note	This product contains sodium azide: a POISONOUS AND HAZARDOUS SUBSTANCE which should be handled by trained staff only.

Applications

- Western Blot (Tissue lysate)

Western Blot analysis of rat brain membrane lysate with Pcdhga1 monoclonal antibody, clone S159-5 (HRP) (Cat # MAB17078).

- Immunohistochemistry (Formalin/PFA-fixed paraffin-embedded sections)

- Immunocytochemistry

Immunocytochemical staining of SK-N-BE with Pcdhga1 monoclonal antibody, clone S159-5 (HRP) (Cat # MAB17078). (A) DAPI (blue) nuclear stain (B) Phalloidin Texas Red F-Actin stain (C) Protocadherin Gamma (pan) Antibody and (D) Composite.

- Immunofluorescence

Gene Info — Pcdhga1

Entrez GeneID	93709
Protein Accession#	Q91XZ0
Gene Name	Pcdhga1
Gene Alias	-

Gene Description	protocadherin gamma subfamily A, 1
Gene Ontology	Hyperlink
Gene Summary	O
Other Designations	-